



UK Office

Everest Biotech Ltd

Cherwell Innovation Centre
77 Heyford Park
Upper Heyford
Oxfordshire
OX25 5HD
UK

Enquiries:

info@everestbiotech.com

Sales:

sales@everestbiotech.com

Tech support:

support@everestbiotech.com

Tel: +44 (0)1869 238326

Fax: +44 (0)1869 238327

US Office

Everest Biotech c/o Abcore

405 Maple Street, Suite A106
Ramona,
CA 92065
USA

Inquiries:

info@everestbiotech.com

Sales:

usasales@everestbiotech.com

Tech support:

support@everestbiotech.com

Tel: 888-320-4628 (toll-free)

Fax: 888-841-9041

www.everestbiotech.com

**Research Use Only. Not for
diagnostic or therapeutic use.**

EB08219 - Goat Anti-TMPRSS2 Antibody

Size: 100µg specific antibody in 200µl



Target Protein

Principal Names: transmembrane protease, serine 2, PRSS10, epitheliasin, TMPS2

Official Symbol: TMPRSS2

Accession Number(s): NP_005647.2

Human GeneID(s): [7113](#)

Immunogen

Peptide with sequence C-TDWIYRQMRADG, from the internal region of the protein sequence according to NP_005647.2.

Please note the [peptide](#) is available for sale.

Purification and Storage

Purified from goat serum by ammonium sulphate precipitation followed by antigen affinity chromatography using the immunizing peptide.

Supplied at 0.5 mg/ml in Tris saline, 0.02% sodium azide, pH7.3 with 0.5% bovine serum albumin.

Aliquot and store at -20°C. Minimize freezing and thawing.

Applications Tested

Peptide ELISA: antibody detection limit dilution 1:8000.

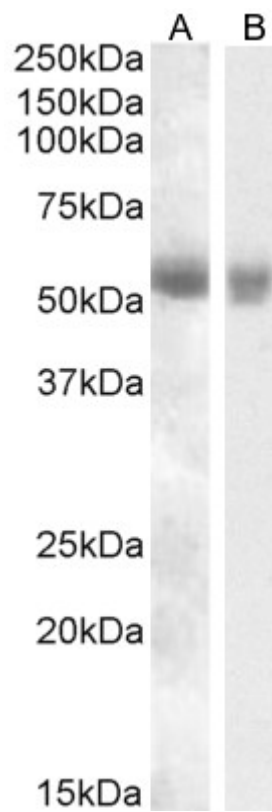
Western blot: Approx 55-60kDa band observed in Human Pancreas and Kidney lysates (calculated MW of 53.9kDa according to NP_005647.2). This molecular weight is routinely observed by other sources. Recommended concentration: 0.1-0.5µg/ml. Primary incubation 1 hour at room temperature.

IHC: Paraffin embedded Human Kidney. Recommended concentration: 6-8µg/ml.

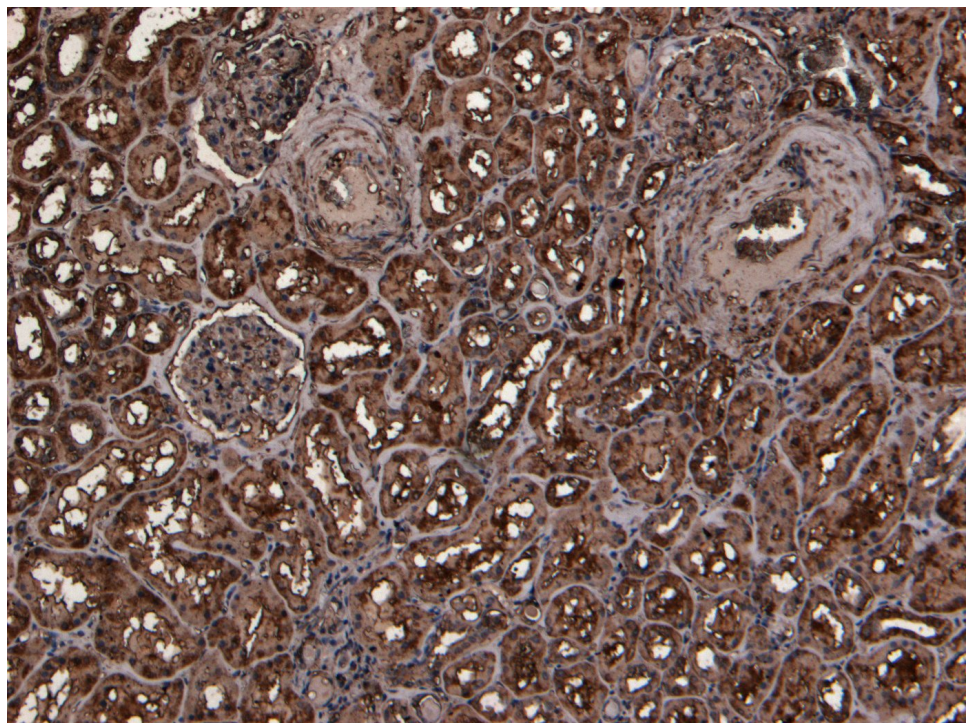
Species Reactivity

Tested: Human

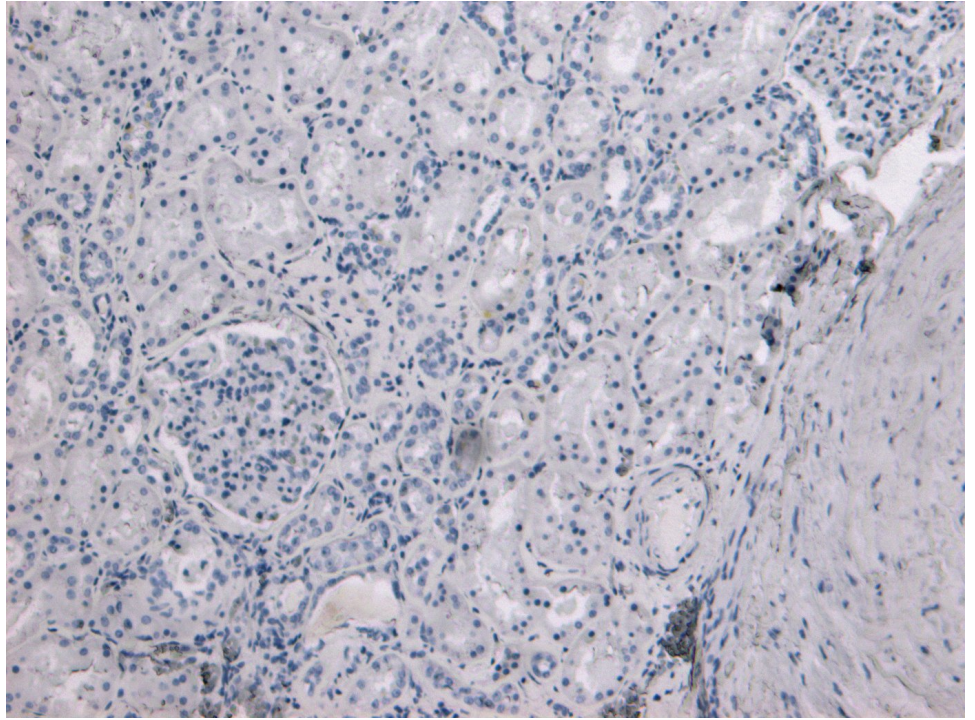
Expected from sequence similarity: Human



EB08219 (0.5 μ g/ml) staining of Human Pancreas and Kidney Lysates (35 μ g protein in RIPA buffer). Detected by chemiluminescence.



EB08219 (8 μ g/ml) staining of paraffin embedded Human Kidney. Heat induced antigen retrieval with citrate buffer pH 6, HRP-staining.



EB08219 Negative Control showing staining of paraffin embedded Human Kidney, with no primary antibody.