



UK Office

Everest Biotech Ltd

Cherwell Innovation Centre
77 Heyford Park
Upper Heyford
Oxfordshire
OX25 5HD
UK

Enquiries:

info@everestbiotech.com

Sales:

sales@everestbiotech.com

Tech support:

support@everestbiotech.com

Tel: +44 (0)1869 238326

Fax: +44 (0)1869 238327

US Office

Everest Biotech c/o Abcore

405 Maple Street, Suite A106
Ramona,
CA 92065
USA

Inquiries:

info@everestbiotech.com

Sales:

usasales@everestbiotech.com

Tech support:

support@everestbiotech.com

Tel: 888-320-4628 (toll-free)

Fax: 888-841-9041

www.everestbiotech.com

**Research Use Only. Not for
diagnostic or therapeutic use.**

EB11050 - Goat Anti-TNF-R-II / TNFR2 (mouse) Antibody

Size: 100µg specific antibody in 200µl



Target Protein

Principal Names: CD120b, p75, p75 TNF receptor, p75TNFR, p80 TNF-alpha receptor, soluble TNFR1B variant 1, TBPII, TNFBR, TNFR1B, TNFR2, TNF-R2, TNF-R75, TNFR80, TNFR-II, TNF-RII, TNF-R-II, tumor necrosis factor beta receptor, tumor necrosis factor binding protein 2, tumor necrosis factor receptor 2, tumor necrosis factor receptor superfamily member 1B, tumor necrosis factor receptor superfamily, member 1B, tumor necrosis factor receptor type II, Tnfrsf1b

Official Symbol: Tnfrsf1b

Accession Number(s): NP_035740.2

Non-Human GeneID(s): 21938 (mouse), 156767 (rat)

Important Comments: The immunizing peptide represents part of a potential extracellular domain.

Immunogen

Peptide with sequence KHFCNKTSDTV CAD, from the internal region of the protein sequence according to NP_035740.2.

Please note the [peptide](#) is available for sale.

Purification and Storage

Purified from goat serum by ammonium sulphate precipitation followed by antigen affinity chromatography using the immunizing peptide.

Supplied at 0.5 mg/ml in Tris saline, 0.02% sodium azide, pH7.3 with 0.5% bovine serum albumin.

Aliquot and store at -20°C. Minimize freezing and thawing.

Applications Tested

Peptide ELISA: antibody detection limit dilution 1:8000.

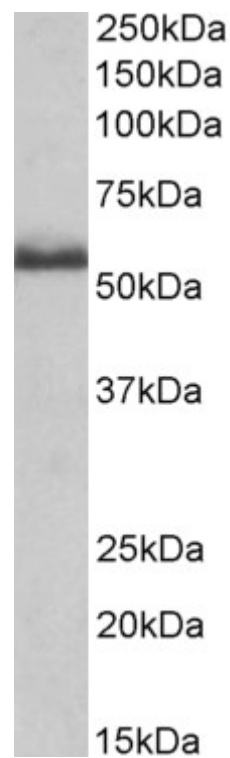
Western blot: Approx 55kDa band observed in Mouse and Rat Spinal Cord lysates (calculated MW of 50.3kDa according to Mouse NP_035740.2). Recommended concentration: 0.2-0.6µg/ml.

IHC: Paraffin embedded Human Liver. Recommended concentration: 5µg/ml.

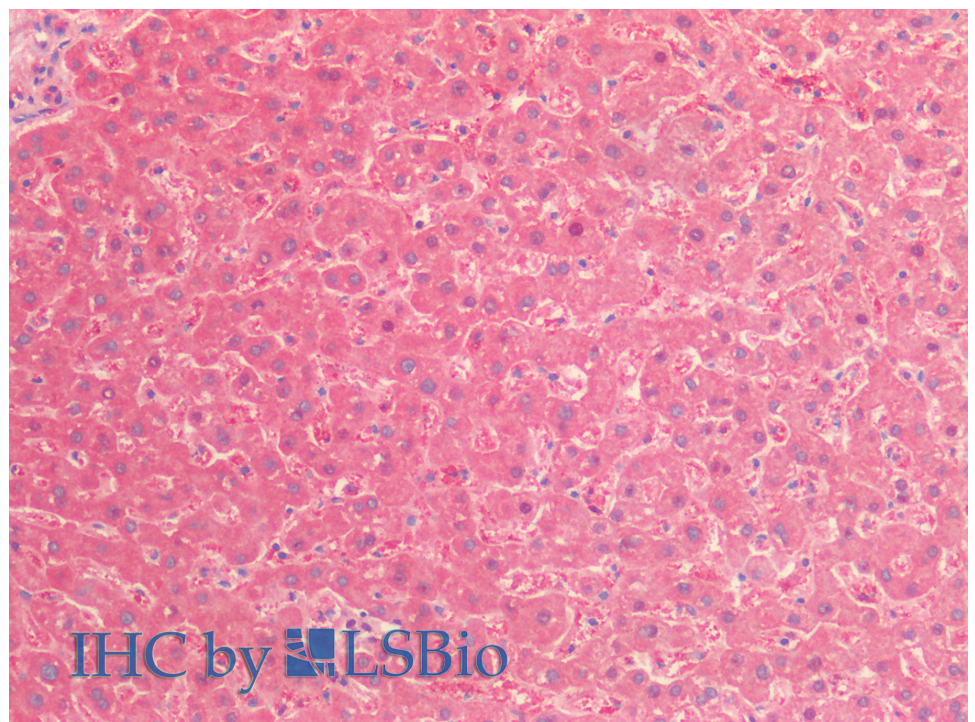
Species Reactivity

Tested: Human, Mouse, Rat

Expected from sequence similarity: Mouse, Rat



EB11050 (0.2µg/ml) staining of Rat Spinal Cord lysate (35µg protein in RIPA buffer). Primary incubation was 1 hour. Detected by chemiluminescence.



EB11050 (5µg/ml) staining of paraffin embedded Human Liver. Steamed antigen retrieval with citrate buffer pH 6, AP-staining.