

## UK Office

### Everest Biotech Ltd

Cherwell Innovation Centre  
77 Heyford Park  
Upper Heyford  
Oxfordshire  
OX25 5HD  
UK

Enquiries:

[info@everestbiotech.com](mailto:info@everestbiotech.com)

Sales:

[sales@everestbiotech.com](mailto:sales@everestbiotech.com)

Tech support:

[support@everestbiotech.com](mailto:support@everestbiotech.com)

Tel: +44 (0)1869 238326

[www.everestbiotech.com](http://www.everestbiotech.com)

**Research Use Only. Not for  
diagnostic or therapeutic use.**

## EB11397 - Goat Anti-TNFRSF1A / TNFR1 Antibody

Size: 100µg specific antibody in 200µl



### Target Protein

**Principal Names:** CD120a, FPF, MGC19588, p55, p55-R, p60, TBP1, TNFAR, TNF-R, TNFR1, TNF-R1, TNFR55, TNF-R55, TNFR60, TNFR-I, TNF-RI, TNF-R-I, tumor necrosis factor binding protein 1, tumor necrosis factor receptor 1A isoform beta, tumor necrosis factor receptor superfamily member 1A, tumor necrosis factor receptor superfamily, member 1A, tumor necrosis factor receptor type 1, tumor necrosis factor-alpha receptor, TNFRSF1A

**Official Symbol:** TNFRSF1A

**Accession Number(s):** NP\_001056.1

**Human GeneID(s):** [7132](#)

**Non-Human GeneID(s):** 25625 (rat)

### Immunogen

Peptide with sequence C-SDHEIDRLELQNGR, from the internal region of the protein sequence according to NP\_001056.1.

Please note the [peptide](#) is available for sale.

### Purification and Storage

Purified from goat serum by ammonium sulphate precipitation followed by antigen affinity chromatography using the immunizing peptide.

Supplied at 0.5 mg/ml in Tris saline, 0.02% sodium azide, pH7.3 with 0.5% bovine serum albumin.

Aliquot and store at -20°C. Minimize freezing and thawing.

### Applications Tested

**Peptide ELISA:** antibody detection limit dilution 1:32000.

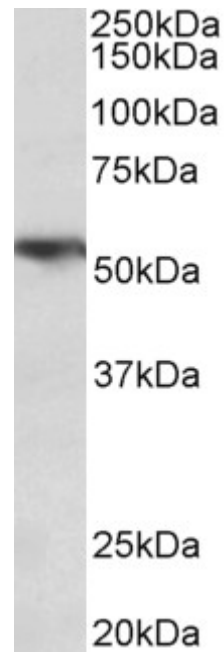
**Western blot:** Approx 52kDa band observed in Human Lung lysates and in lysates of cell lines A549, HepG2 and K562 (calculated MW of 50.5kDa according to NP\_001056.1).

Recommended concentration: 0.3-1µg/ml.

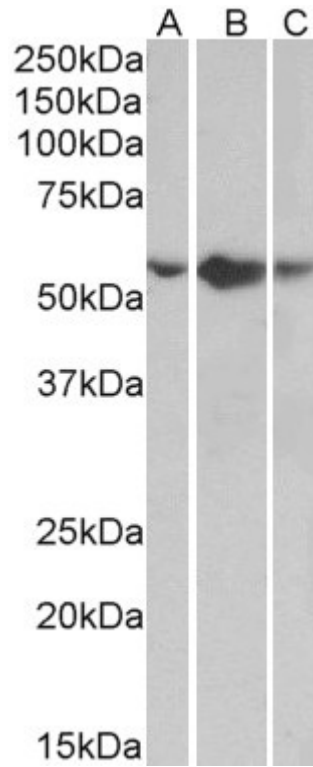
### Species Reactivity

**Tested:** Human

**Expected from sequence similarity:** Human, Rat, Pig



EB11397 (0.3 $\mu$ g/ml) staining of Human Lung lysate (35 $\mu$ g protein in RIPA buffer). Primary incubation was 1 hour. Detected by chemiluminescence.



EB11397 (0.5 $\mu$ g/ml) staining of A549 (A), HepG2 (B) and K562 (C) lysates (35 $\mu$ g protein in RIPA buffer). Primary incubation was 1 hour. Detected by chemiluminescence.