

UK Office

Everest Biotech Ltd

Cherwell Innovation Centre
77 Heyford Park
Upper Heyford
Oxfordshire
OX25 5HD
UK

Enquiries:

info@everestbiotech.com

Sales:

sales@everestbiotech.com

Tech support:

support@everestbiotech.com

Tel: +44 (0)1869 238326

Fax: +44 (0)1869 238327

US Office

Everest Biotech c/o Abcore

405 Maple Street, Suite A106
Ramona,
CA 92065
USA

Inquiries:

info@everestbiotech.com

Sales:

usasales@everestbiotech.com

Tech support:

support@everestbiotech.com

Tel: 888-320-4628 (toll-free)

Fax: 888-841-9041

www.everestbiotech.com

**Research Use Only. Not for
diagnostic or therapeutic use.**

EB09379 - Goat Anti-TNFSF13 / APRIL Antibody

Size: 100µg specific antibody in 200µl



Target Protein

Principal Names: TNFSF13, tumor necrosis factor (ligand) superfamily, member 13, APRIL, CD256, TALL2, TRDL-1, UNQ383/PRO715, ligand, OTTHUMP00000174780, TNF- and APOL-related leukocyte expressed ligand 2, a proliferation inducing ligand, tumor necrosis factor (ligand) superfamily member 13 transcript variant delta, tumor necrosis factor ligand superfamily member 13 epsilon, tumor necrosis factor ligand superfamily, member 13, tumor necrosis factor-related death ligand-1

Official Symbol: TNFSF13

Accession Number(s): NP_003799.1; NP_742084.1; NP_742085.1

Human GeneID(s): [8741](#) , [407977](#)

Non-Human GeneID(s): 69583 (mouse), 287437 (rat)

Important Comments: This antibody is expected to recognize all isoforms (alpha, beta, gamma: NP_003799.1; NP_742084.1; NP_742085.1). This antibody also cross-reacts with human, mouse and dog TNFSF12-TNFSF13 protein (GeneID: 407977, 619441, 479484; 36.6kDa, 45.9kDa, ca. 25.9kDa).

Immunogen

Peptide with sequence C-PRARAKLNLSPHGT, from the C-Terminus (near) of the protein sequence according to NP_003799.1; NP_742084.1; NP_742085.1.

Please note the [peptide](#) is available for sale.

Purification and Storage

Purified from goat serum by ammonium sulphate precipitation followed by antigen affinity chromatography using the immunizing peptide.

Supplied at 0.5 mg/ml in Tris saline, 0.02% sodium azide, pH7.3 with 0.5% bovine serum albumin.

Aliquot and store at -20°C. Minimize freezing and thawing.

Applications Tested

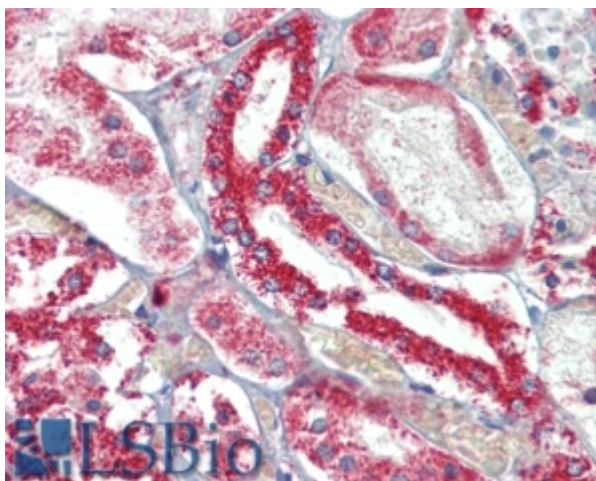
Peptide ELISA: antibody detection limit dilution 1:8000.

IHC: In paraffin embedded Human Kidney shows heavy cytoplasm staining in the epithelial cells of DCT. Recommended concentration, 5-15µg/ml.

Species Reactivity

Tested: Human

Expected from sequence similarity: Human, Mouse, Rat, Dog, Cow



EB09379 (5µg/ml) staining of paraffin embedded Human Kidney. Steamed antigen retrieval with citrate buffer pH 6, AP-staining.