

## UK Office

### Everest Biotech Ltd

Cherwell Innovation Centre  
77 Heyford Park  
Upper Heyford  
Oxfordshire  
OX25 5HD  
UK

Enquiries:

[info@everestbiotech.com](mailto:info@everestbiotech.com)

Sales:

[sales@everestbiotech.com](mailto:sales@everestbiotech.com)

Tech support:

[support@everestbiotech.com](mailto:support@everestbiotech.com)

Tel: +44 (0)1869 238326

[www.everestbiotech.com](http://www.everestbiotech.com)

**Research Use Only. Not for  
diagnostic or therapeutic use.**

## EB11958 - Goat Anti-TNNI3 (aa117-127) Antibody

Size: 100µg specific antibody in 200µl



### Target Protein

**Principal Names:** TNNI3, troponin I type 3 (cardiac), CMD1FF, CMD2A, CMH7, RCM1, TNNC1, cTnl, troponin I, cardiac muscle

**Official Symbol:** TNNI3

**Accession Number(s):** NP\_000354.4

**Human GeneID(s):** [7137](#)

**Non-Human GeneID(s):** 21954 (mouse), 29248 (rat)

### Immunogen

Peptide with sequence C-KVTKNITEIAD, from the internal region of the protein sequence according to NP\_000354.4.

Please note the [peptide](#) is available for sale.

### Purification and Storage

Purified from goat serum by ammonium sulphate precipitation followed by antigen affinity chromatography using the immunizing peptide.

Supplied at 0.5 mg/ml in Tris saline, 0.02% sodium azide, pH7.3 with 0.5% bovine serum albumin.

Aliquot and store at -20°C. Minimize freezing and thawing.

### Applications Tested

**Peptide ELISA:** antibody detection limit dilution 1:128000.

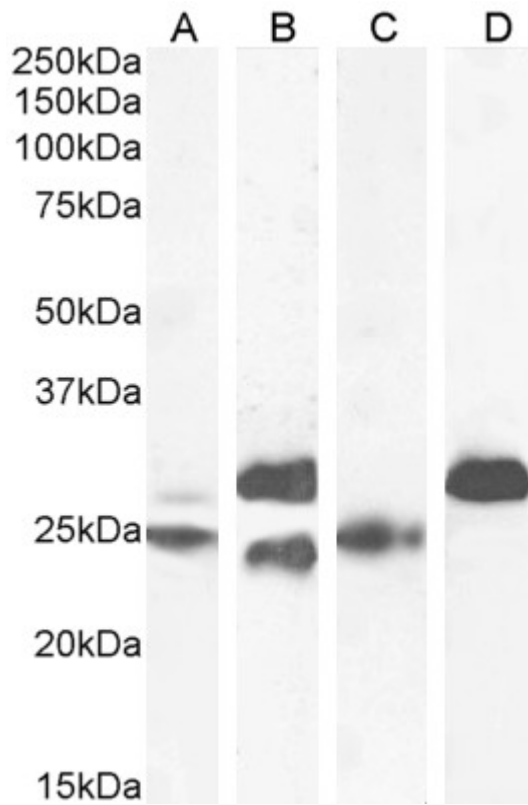
**Western blot:** Approx 25+26kDa doublet band observed in Human Heart, approx 24+27kDa in Mouse Heart, approx 25kDa in Rat Heart and approx 27kDa in Pig Heart lysates (calculated MW of 24kDa according to Human NP\_000354.4, and Pig NP\_001092069.1 and 24.3kDa according to Mouse NP\_033432.1 and Ra tNP\_058840.1). This molecular weight is routinely observed by other sources. Recommended concentration: 0.1-0.3µg/ml. Primary incubation 1 hour at room temperature.

**Immunofluorescence:** Strong expression of the protein seen in the cytoplasm of U2OS and HeLa cells. Recommended concentration: 10µg/ml.

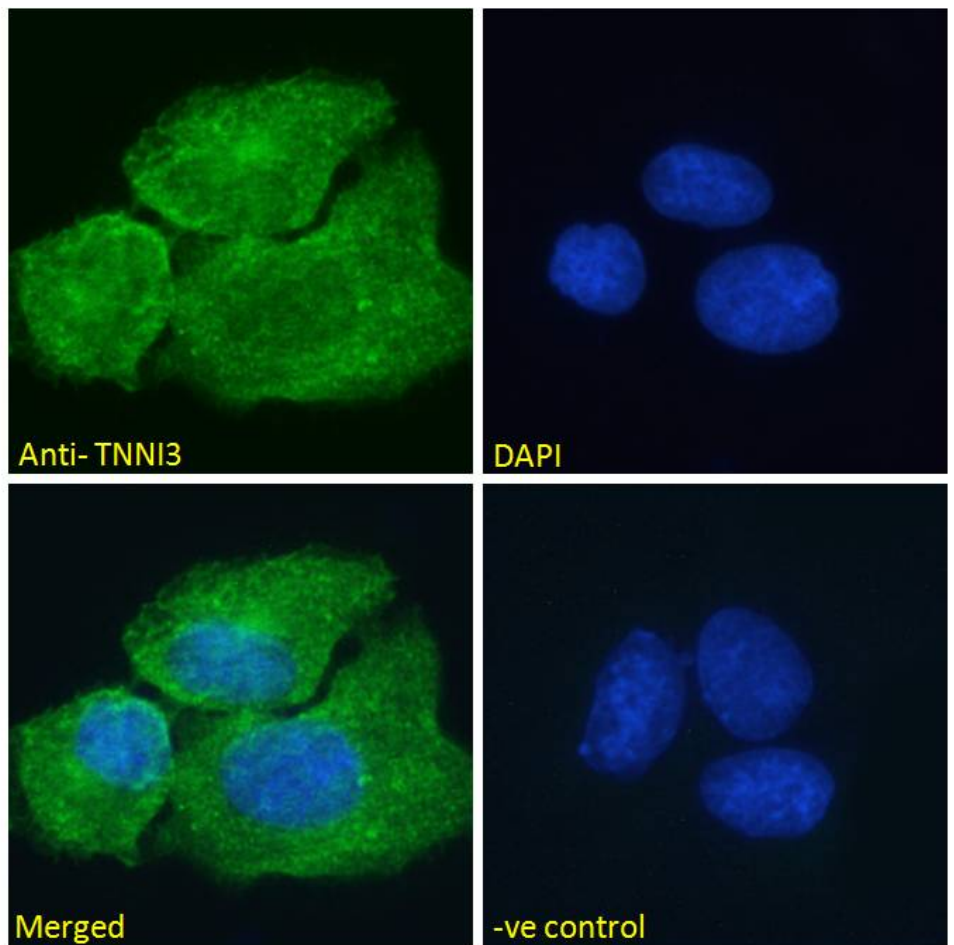
### Species Reactivity

**Tested:** Human, Mouse, Rat, Pig

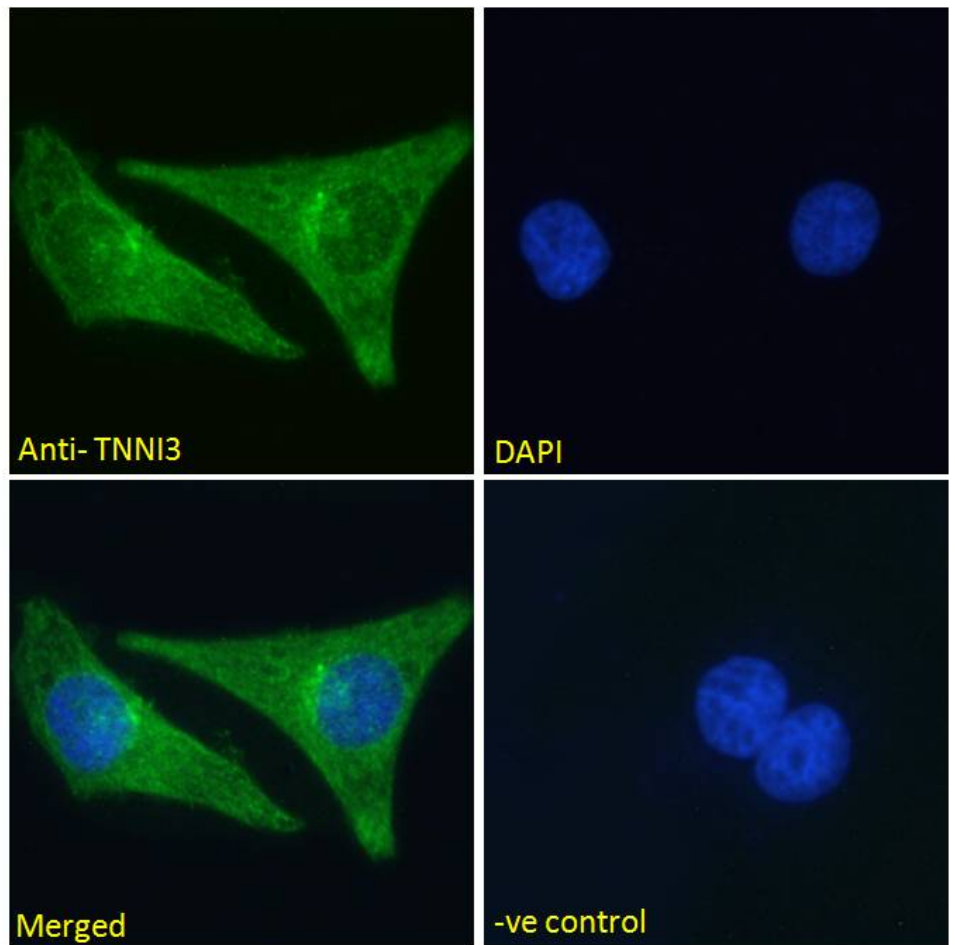
**Expected from sequence similarity:** Human, Mouse, Rat, Dog, Pig, Cow



EB11958 (0.1  $\mu\text{g/ml}$ ) staining of Human (A), (0.03  $\mu\text{g/ml}$ ) Mouse (B), (0.1  $\mu\text{g/ml}$ ) Rat (C) and Pig (D) Heart lysate (35  $\mu\text{g}$  protein in RIPA buffer). Detected by chemiluminescence.



EB11958 Immunofluorescence analysis of paraformaldehyde fixed U2OS cells, permeabilized with 0.15% Triton. Primary incubation 1hr (10ug/ml) followed by Alexa Fluor 488 secondary antibody (2ug/ml), showing vesicle and cytoplasmic staining. The nuclear stain is DAPI (blue). Negative control: Unimmunized goat IgG (10ug/ml) followed by Alexa Fluor 488 secondary antibody (2ug/ml).



EB11958 Immunofluorescence analysis of paraformaldehyde fixed HeLa cells, permeabilized with 0.15% Triton. Primary incubation 1hr (10ug/ml) followed by Alexa Fluor 488 secondary antibody (2ug/ml), showing cytoplasmic staining. The nuclear stain is DAPI (blue). Negative control: Unimmunized goat IgG (10ug/ml) followed by Alexa Fluor 488 secondary antibody (2ug/ml).