



UK Office

Everest Biotech Ltd

Cherwell Innovation Centre
77 Heyford Park
Upper Heyford
Oxfordshire
OX25 5HD
UK

Enquiries:

info@everestbiotech.com

Sales:

sales@everestbiotech.com

Tech support:

support@everestbiotech.com

Tel: +44 (0)1869 238326

Fax: +44 (0)1869 238327

US Office

Everest Biotech c/o Abcore

405 Maple Street, Suite A106
Ramona,
CA 92065
USA

Inquiries:

info@everestbiotech.com

Sales:

usasales@everestbiotech.com

Tech support:

support@everestbiotech.com

Tel: 888-320-4628 (toll-free)

Fax: 888-841-9041

www.everestbiotech.com

**Research Use Only. Not for
diagnostic or therapeutic use.**

EB11958 - Goat Anti-TNNI3 (aa117-127) Antibody

Size: 100µg specific antibody in 200µl



Target Protein

Principal Names: TNNI3, troponin I type 3 (cardiac), CMD1FF, CMD2A, CMH7, RCM1, TNNC1, cTnI, troponin I, cardiac muscle

Official Symbol: TNNI3

Accession Number(s): NP_000354.4

Human GeneID(s): [7137](#)

Non-Human GeneID(s): 21954 (mouse), 29248 (rat)

Immunogen

Peptide with sequence C-KVTKNITEIAD, from the internal region of the protein sequence according to NP_000354.4.

Please note the [peptide](#) is available for sale.

Purification and Storage

Purified from goat serum by ammonium sulphate precipitation followed by antigen affinity chromatography using the immunizing peptide.

Supplied at 0.5 mg/ml in Tris saline, 0.02% sodium azide, pH7.3 with 0.5% bovine serum albumin.

Aliquot and store at -20°C. Minimize freezing and thawing.

Applications Tested

Peptide ELISA: antibody detection limit dilution 1:128000.

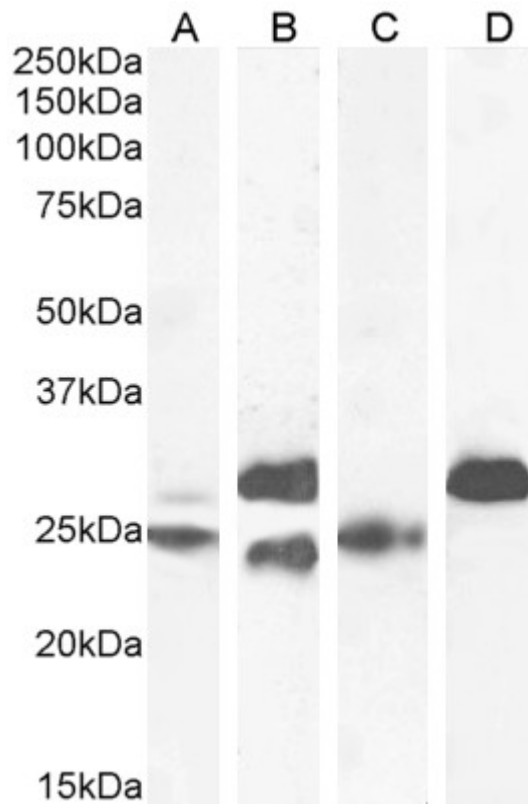
Western blot: Approx 25+26kDa doublet band observed in Human Heart, approx 24+27kDa in Mouse Heart, approx 25kDa in Rat Heart and approx 27kDa in Pig Heart lysates (calculated MW of 24kDa according to Human NP_000354.4, and Pig NP_001092069.1 and 24.3kDa according to Mouse NP_033432.1 and Ra tNP_058840.1). This molecular weight is routinely observed by other sources. Recommended concentration: 0.1-0.3µg/ml. Primary incubation 1 hour at room temperature.

Immunofluorescence: Strong expression of the protein seen in the cytoplasm of U2OS and HeLa cells. Recommended concentration: 10µg/ml.

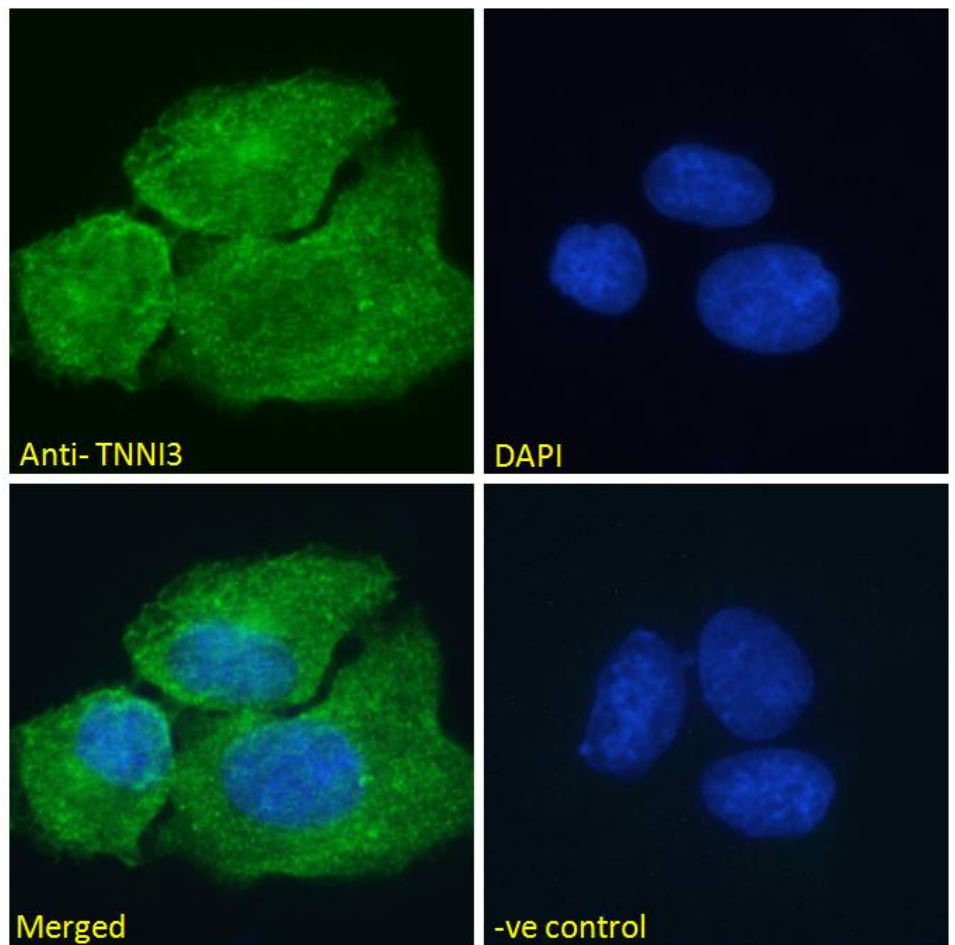
Species Reactivity

Tested: Human, Mouse, Rat, Pig

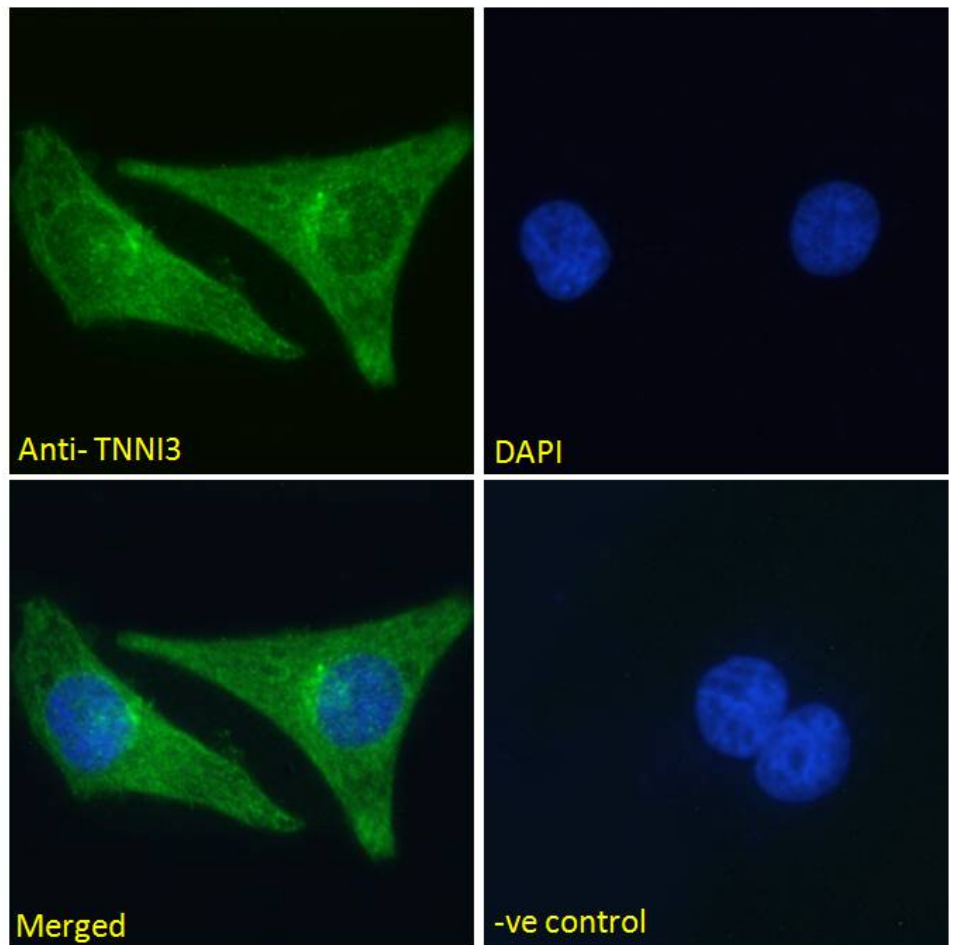
Expected from sequence similarity: Human, Mouse, Rat, Dog, Pig, Cow



EB11958 (0.1 μ g/ml) staining of Human (A), (0.03 μ g/ml) Mouse (B), (0.1 μ g/ml) Rat (C) and Pig (D) Heart lysate (35 μ g protein in RIPA buffer). Detected by chemiluminescence.



EB11958 Immunofluorescence analysis of paraformaldehyde fixed U2OS cells, permeabilized with 0.15% Triton. Primary incubation 1hr (10ug/ml) followed by Alexa Fluor 488 secondary antibody (2ug/ml), showing vesicle and cytoplasmic staining. The nuclear stain is DAPI (blue). Negative control: Unimmunized goat IgG (10ug/ml) followed by Alexa Fluor 488 secondary antibody (2ug/ml).



EB11958 Immunofluorescence analysis of paraformaldehyde fixed HeLa cells, permeabilized with 0.15% Triton. Primary incubation 1hr (10ug/ml) followed by Alexa Fluor 488 secondary antibody (2ug/ml), showing cytoplasmic staining. The nuclear stain is DAPI (blue). Negative control: Unimmunized goat IgG (10ug/ml) followed by Alexa Fluor 488 secondary antibody (2ug/ml).