

## UK Office

### Everest Biotech Ltd

Cherwell Innovation Centre  
77 Heyford Park  
Upper Heyford  
Oxfordshire  
OX25 5HD  
UK

Enquiries:

[info@everestbiotech.com](mailto:info@everestbiotech.com)

Sales:

[sales@everestbiotech.com](mailto:sales@everestbiotech.com)

Tech support:

[support@everestbiotech.com](mailto:support@everestbiotech.com)

Tel: +44 (0)1869 238326

[www.everestbiotech.com](http://www.everestbiotech.com)

**Research Use Only. Not for  
diagnostic or therapeutic use.**

## EB11939 - Goat Anti-TNNT1 Antibody

Size: 100µg specific antibody in 200µl



### Target Protein

**Principal Names:** TNNT1, troponin T type 1 (skeletal, slow), ANM, FLJ98147, MGC104241, STNT, TNT, TNTS, slow skeletal muscle troponin T, troponin T, slow skeletal muscle, troponin-T1, skeletal, slow

**Official Symbol:** TNNT1

**Accession Number(s):** NP\_003274.3; NP\_001119604.1; NP\_001119605.1

**Human GeneID(s):** [7138](#)

**Important Comments:** This antibody is expected to recognize all reported isoforms (NP\_003274.3; NP\_001119604.1; NP\_001119605.1).

### Immunogen

Peptide with sequence C-EKAQELSDWIHQLE, from the internal region of the protein sequence according to NP\_003274.3; NP\_001119604.1; NP\_001119605.1.

Please note the [peptide](#) is available for sale.

### Purification and Storage

Purified from goat serum by ammonium sulphate precipitation followed by antigen affinity chromatography using the immunizing peptide.

Supplied at 0.5 mg/ml in Tris saline, 0.02% sodium azide, pH7.3 with 0.5% bovine serum albumin.

Aliquot and store at -20°C. Minimize freezing and thawing.

### Applications Tested

**Peptide ELISA:** antibody detection limit dilution 1:128000.

**Western blot:** Approx 37+35kDa bands observed in Human Skeletal Muscle lysates A single 37kDa band was observed in some lysates.(calculated MW of 32.9kDa according to NP\_003274.3). This molecular weight is routinely observed by other sources.

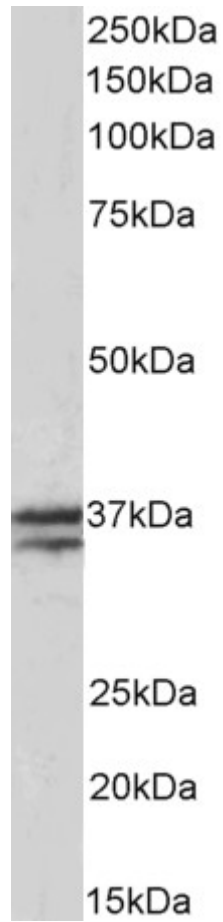
Recommended concentration: 0.03-0.1µg/ml. Primary incubation was 1 hour.

**IHC:** Paraffin embedded Human Skeletal Muscle. Recommended concentration: 5µg/ml.

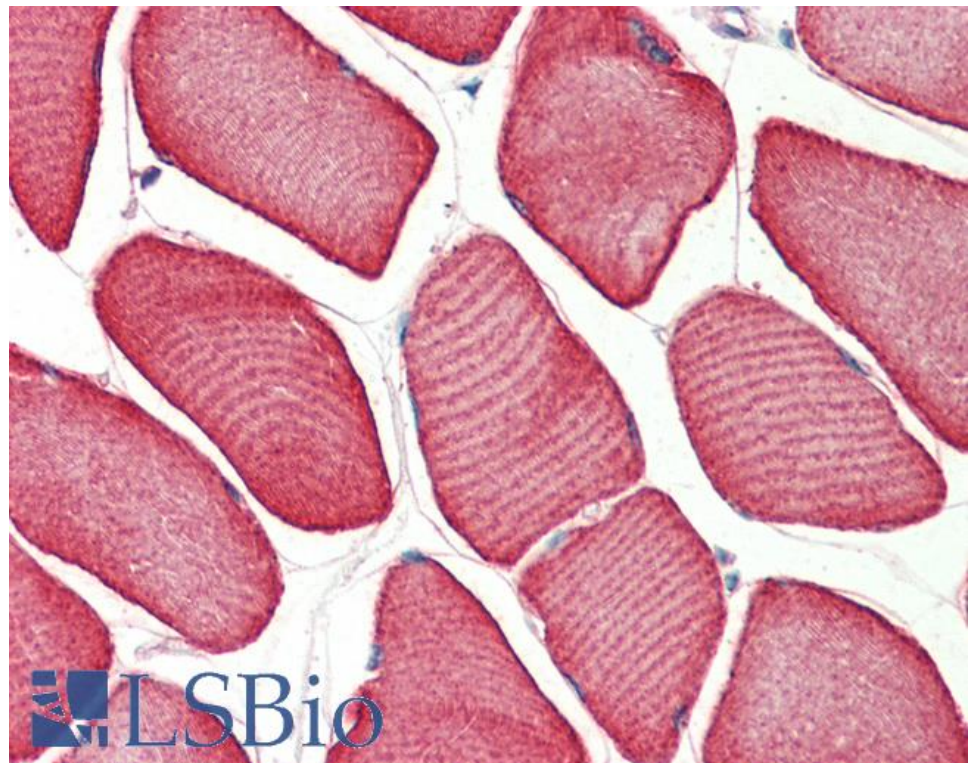
### Species Reactivity

**Tested:** Human

**Expected from sequence similarity:** Human, Dog, Pig, Cow



EB11939 (0.03 $\mu$ g/ml) staining of Human Skeletal Muscle lysate (35 $\mu$ g protein in RIPA buffer). Detected by chemiluminescence.



EB11939 (5 $\mu$ g/ml) staining of paraffin embedded Human Skeletal Muscle. Steamed antigen retrieval with citrate buffer pH 6, AP-staining.