



UK Office

Everest Biotech Ltd

Cherwell Innovation Centre
77 Heyford Park
Upper Heyford
Oxfordshire
OX25 5HD
UK

Enquiries:

info@everestbiotech.com

Sales:

sales@everestbiotech.com

Tech support:

support@everestbiotech.com

Tel: +44 (0)1869 238326

Fax: +44 (0)1869 238327

US Office

Everest Biotech c/o Abcore

405 Maple Street, Suite A106
Ramona,
CA 92065
USA

Inquiries:

info@everestbiotech.com

Sales:

usasales@everestbiotech.com

Tech support:

support@everestbiotech.com

Tel: 888-320-4628 (toll-free)

Fax: 888-841-9041

www.everestbiotech.com

**Research Use Only. Not for
diagnostic or therapeutic use.**

EB11939 - Goat Anti-TNNT1 Antibody

Size: 100µg specific antibody in 200µl



Target Protein

Principal Names: TNNT1, troponin T type 1 (skeletal, slow), ANM, FLJ98147, MGC104241, STNT, TNT, TSTS, slow skeletal muscle troponin T, troponin T, slow skeletal muscle, troponin-T1, skeletal, slow

Official Symbol: TNNT1

Accession Number(s): NP_003274.3; NP_001119604.1; NP_001119605.1

Human GeneID(s): [7138](#)

Important Comments: This antibody is expected to recognize all reported isoforms (NP_003274.3; NP_001119604.1; NP_001119605.1).

Immunogen

Peptide with sequence C-EKAQELSDWIHQLE, from the internal region of the protein sequence according to NP_003274.3; NP_001119604.1; NP_001119605.1.

Please note the [peptide](#) is available for sale.

Purification and Storage

Purified from goat serum by ammonium sulphate precipitation followed by antigen affinity chromatography using the immunizing peptide.

Supplied at 0.5 mg/ml in Tris saline, 0.02% sodium azide, pH7.3 with 0.5% bovine serum albumin.

Aliquot and store at -20°C. Minimize freezing and thawing.

Applications Tested

Peptide ELISA: antibody detection limit dilution 1:128000.

Western blot: Approx 37+35kDa bands observed in Human Skeletal Muscle lysates A single 37kDa band was observed in some lysates.(calculated MW of 32.9kDa according to NP_003274.3). This molecular weight is routinely observed by other sources.

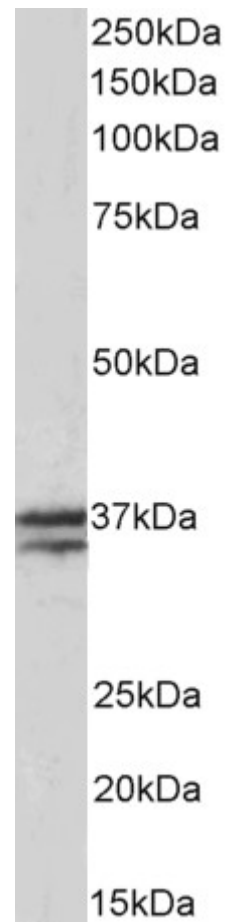
Recommended concentration: 0.03-0.1µg/ml. Primary incubation was 1 hour.

IHC: Paraffin embedded Human Skeletal Muscle. Recommended concentration: 5µg/ml.

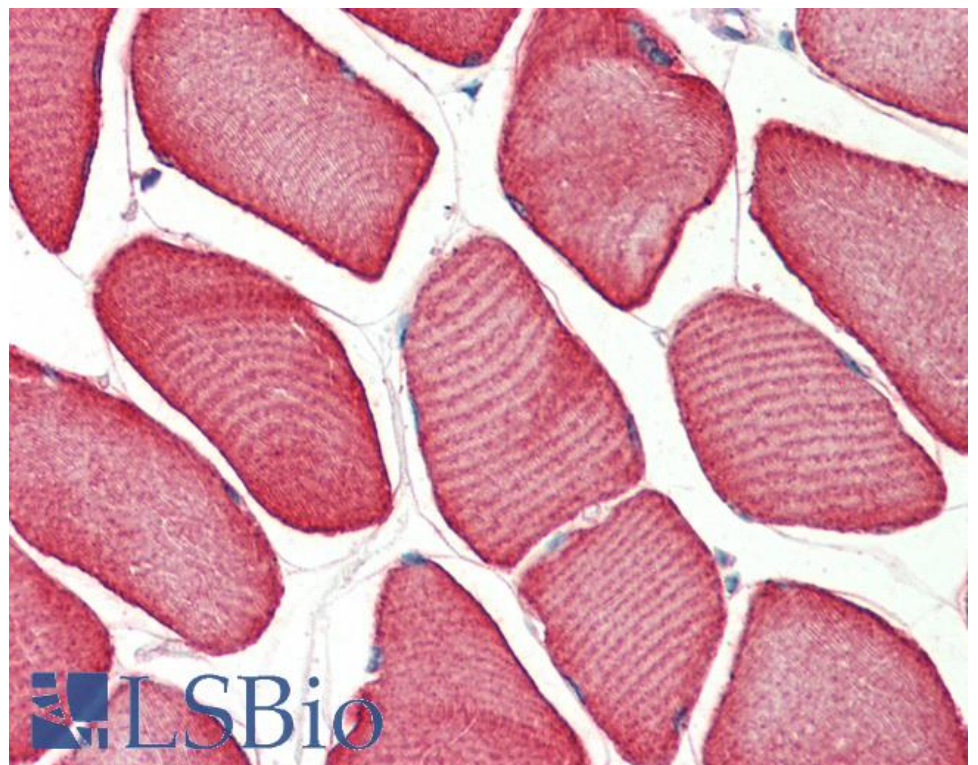
Species Reactivity

Tested: Human

Expected from sequence similarity: Human, Dog, Pig, Cow



EB11939 (0.03 μ g/ml) staining of Human Skeletal Muscle lysate (35 μ g protein in RIPA buffer). Detected by chemiluminescence.



EB11939 (5 μ g/ml) staining of paraffin embedded Human Skeletal Muscle. Steamed antigen retrieval with citrate buffer pH 6, AP-staining.