



UK Office

Everest Biotech Ltd

Cherwell Innovation Centre
77 Heyford Park
Upper Heyford
Oxfordshire
OX25 5HD
UK

Enquiries:

info@everestbiotech.com

Sales:

sales@everestbiotech.com

Tech support:

support@everestbiotech.com

Tel: +44 (0)1869 238326

Fax: +44 (0)1869 238327

US Office

Everest Biotech c/o Abcore

405 Maple Street, Suite A106
Ramona,
CA 92065
USA

Inquiries:

info@everestbiotech.com

Sales:

usasales@everestbiotech.com

Tech support:

support@everestbiotech.com

Tel: 888-320-4628 (toll-free)

Fax: 888-841-9041

www.everestbiotech.com

**Research Use Only. Not for
diagnostic or therapeutic use.**

EB06556 - Goat Anti-TOM1L2 Antibody

Size: 100µg specific antibody in 200µl



Target Protein

Principal Names: TOM1L2, FLJ32746, target of myb1-like 2 (chicken), target of myb1 (chicken) homolog-like 1, target of myb1 (chicken) homolog-like 2

Official Symbol: TOM1L2

Accession Number(s): NP_001028723.1; NP_001076437.1

Human GeneID(s): [146691](#)

Important Comments: This antibody is expected to recognise both reported isoforms.

Immunogen

Peptide with sequence CRKKPERSEDALFAL, from the C Terminus of the protein sequence according to NP_001028723.1; NP_001076437.1.

Please note the [peptide](#) is available for sale.

Purification and Storage

Purified from goat serum by ammonium sulphate precipitation followed by antigen affinity chromatography using the immunizing peptide.

Supplied at 0.5 mg/ml in Tris saline, 0.02% sodium azide, pH7.3 with 0.5% bovine serum albumin.

Aliquot and store at -20°C. Minimize freezing and thawing.

Applications Tested

Peptide ELISA: antibody detection limit dilution 1:64000.

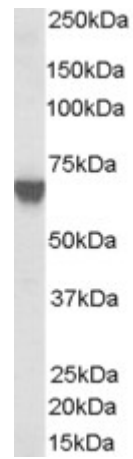
Western blot: Approx 60kDa band observed in Human Fibroblast A431 lysates (calculated MW of 51.8kDa according to NP_653279). Recommended concentration: 0.1-1µg/ml.

IHC: In paraffin embedded Human Skeletal Muscle shows variable staining from fibre to fibre. Recommended concentration, 5-10µg/ml.

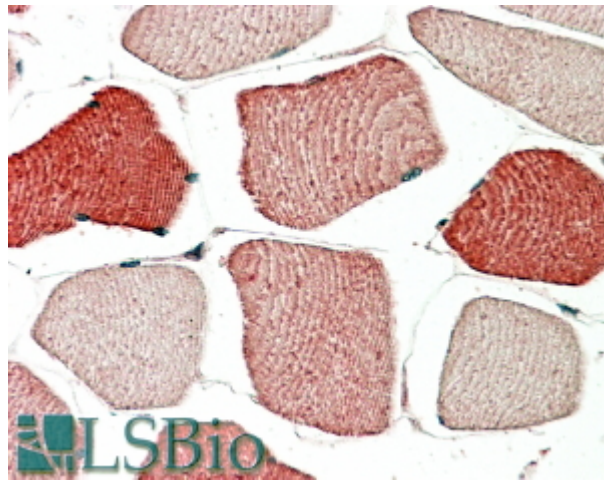
Species Reactivity

Tested: Human

Expected from sequence similarity: Human, Mouse, Dog



EB06556 (0.03 μ g/ml) staining of A431 lysate (35 μ g protein in RIPA buffer). Primary incubation was 1 hour.
Detected by chemiluminescence.



EB06556 (5 μ g/ml) staining of paraffin embedded Human Skeletal Muscle. Steamed antigen retrieval with citrate buffer pH 6, AP-staining.