



UK Office

Everest Biotech Ltd

Cherwell Innovation Centre
77 Heyford Park
Upper Heyford
Oxfordshire
OX25 5HD
UK

Enquiries:

info@everestbiotech.com

Sales:

sales@everestbiotech.com

Tech support:

support@everestbiotech.com

Tel: +44 (0)1869 238326

Fax: +44 (0)1869 238327

US Office

Everest Biotech c/o Abcore

405 Maple Street, Suite A106
Ramona,
CA 92065
USA

Inquiries:

info@everestbiotech.com

Sales:

usasales@everestbiotech.com

Tech support:

support@everestbiotech.com

Tel: 888-320-4628 (toll-free)

Fax: 888-841-9041

www.everestbiotech.com

**Research Use Only. Not for
diagnostic or therapeutic use.**

EB09805 - Goat Anti-TOMM40 Antibody

Size: 100µg specific antibody in 200µl



Target Protein

Principal Names: C19orf1, D19S1177E, mitochondrial outer membrane protein, PEREC1, PER-EC1, TOM40, translocase of outer mitochondrial membrane 40, translocase of outer mitochondrial membrane 40 homolog (yeast), TOMM40

Official Symbol: TOMM40

Accession Number(s): NP_006105.1

Human GeneID(s): [10452](#)

Non-Human GeneID(s): 53333 (mouse), 308416 (rat)

Important Comments: Reported variants represent identical protein: NP_001122389.1, NP_001122388.1, NP_006105.1.

Immunogen

Peptide with sequence C-HTVALSTIGESNYH, from the internal region of the protein sequence according to NP_006105.1.

Please note the [peptide](#) is available for sale.

Purification and Storage

Purified from goat serum by ammonium sulphate precipitation followed by antigen affinity chromatography using the immunizing peptide.

Supplied at 0.5 mg/ml in Tris saline, 0.02% sodium azide, pH7.3 with 0.5% bovine serum albumin.

Aliquot and store at -20°C. Minimize freezing and thawing.

Applications Tested

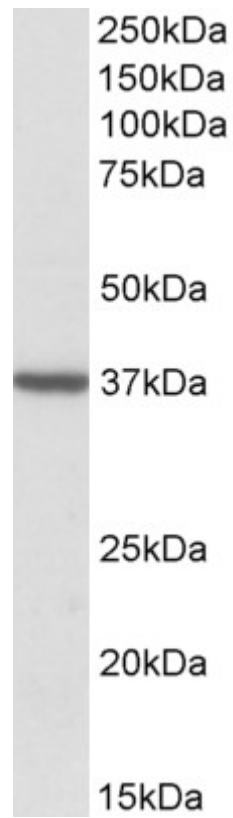
Peptide ELISA: antibody detection limit dilution 1:16000.

Western blot: Approx 37kDa band observed in Human Brain (Cerebellum and Frontal Cortex) lysates (calculated MW of 37.9kDa according to NP_006105.1). Recommended concentration: 1-3µg/ml. Primary incubation was 1 hour.

Species Reactivity

Tested: Human

Expected from sequence similarity: Human, Mouse, Rat, Dog, Cow



EB09805 (2 μ g/ml) staining of Human Frontal Cortex lysate (35 μ g protein in RIPA buffer). Detected by chemiluminescence.