



UK Office

Everest Biotech Ltd

Cherwell Innovation Centre
77 Heyford Park
Upper Heyford
Oxfordshire
OX25 5HD
UK

Enquiries:

info@everestbiotech.com

Sales:

sales@everestbiotech.com

Tech support:

support@everestbiotech.com

Tel: +44 (0)1869 238326

Fax: +44 (0)1869 238327

US Office

Everest Biotech c/o Abcore

405 Maple Street, Suite A106
Ramona,
CA 92065
USA

Inquiries:

info@everestbiotech.com

Sales:

usasales@everestbiotech.com

Tech support:

support@everestbiotech.com

Tel: 888-320-4628 (toll-free)

Fax: 888-841-9041

www.everestbiotech.com

**Research Use Only. Not for
diagnostic or therapeutic use.**

EB09610 - Goat Anti-TPCN2 Antibody

Size: 100µg specific antibody in 200µl



Target Protein

Principal Names: TPCN2, two pore segment channel 2, FLJ41094, SHEP10, TPC2, two-pore calcium channel protein 2

Official Symbol: TPCN2

Accession Number(s): NP_620714.2

Human GeneID(s): [219931](#)

Immunogen

Peptide with sequence C-EDELTERLSQHPH, from the C Terminus of the protein sequence according to NP_620714.2.

Please note the [peptide](#) is available for sale.

Purification and Storage

Purified from goat serum by ammonium sulphate precipitation followed by antigen affinity chromatography using the immunizing peptide.

Supplied at 0.5 mg/ml in Tris saline, 0.02% sodium azide, pH7.3 with 0.5% bovine serum albumin.

Aliquot and store at -20°C. Minimize freezing and thawing.

Applications Tested

Peptide ELISA: antibody detection limit dilution 1:16000.

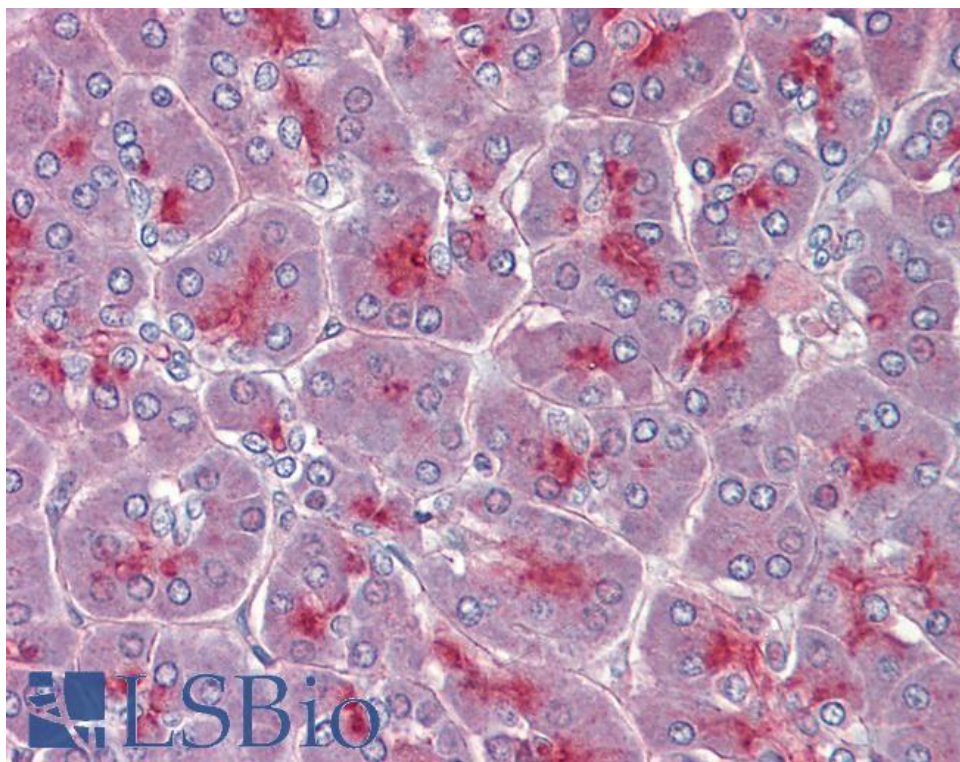
Western blot: Preliminary experiments gave an approx 30kDa band in Human Brain (Cerebral Cortex), Kidney and Liver lysates after 0.5µg/ml antibody staining. Please note that currently we cannot find an explanation in the literature for the band we observe given the calculated size of 85.2kDa according to NP_620714.2. The 30kDa band was successfully blocked by incubation with the immunizing peptide.

IHC: Paraffin embedded Human Pancreas and Colon. Recommended concentration: 3.75µg/ml.

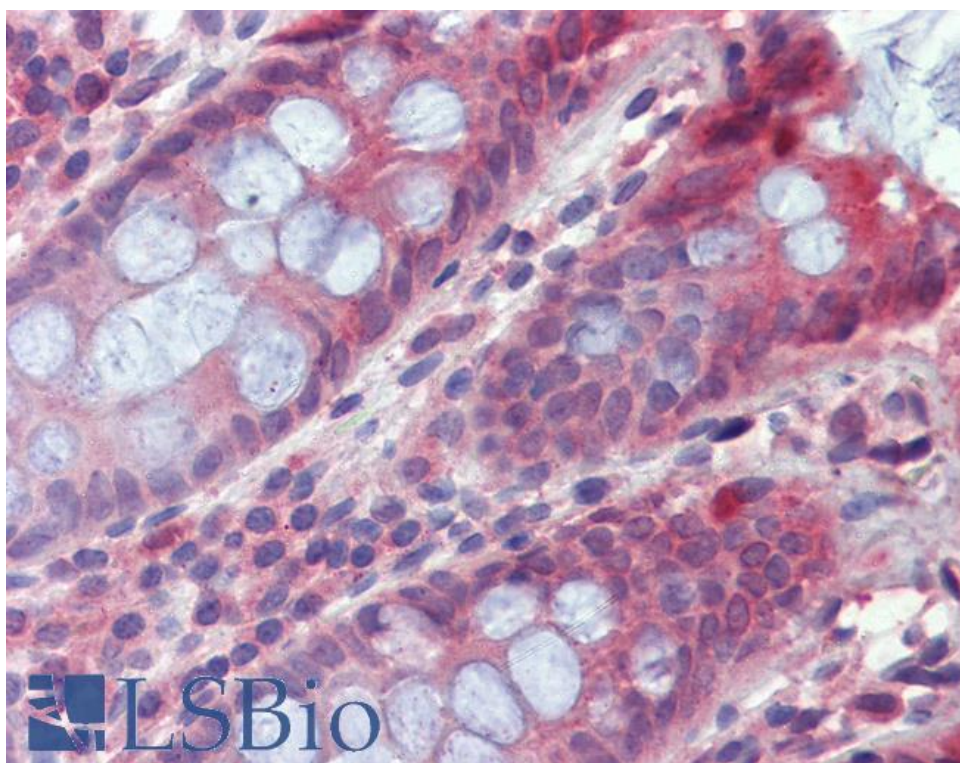
Species Reactivity

Tested: Human

Expected from sequence similarity: Human



EB09610 (3.75µg/ml) staining of paraffin embedded Human Pancreas. Steamed antigen retrieval with citrate buffer pH 6, AP-staining.



EB09610 (3.75µg/ml) staining of paraffin embedded Human Colon. Steamed antigen retrieval with citrate buffer pH 6, AP-staining.