



UK Office

Everest Biotech Ltd

Cherwell Innovation Centre
77 Heyford Park
Upper Heyford
Oxfordshire
OX25 5HD
UK

Enquiries:

info@everestbiotech.com

Sales:

sales@everestbiotech.com

Tech support:

support@everestbiotech.com

Tel: +44 (0)1869 238326

Fax: +44 (0)1869 238327

US Office

Everest Biotech c/o Abcore

405 Maple Street, Suite A106
Ramona,
CA 92065
USA

Inquiries:

info@everestbiotech.com

Sales:

usasales@everestbiotech.com

Tech support:

support@everestbiotech.com

Tel: 888-320-4628 (toll-free)

Fax: 888-841-9041

www.everestbiotech.com

**Research Use Only. Not for
diagnostic or therapeutic use.**

EB08025 - Goat Anti-TPD52L2 / D54 Antibody

Size: 100µg specific antibody in 200µl



Target Protein

Principal Names: TPD52L2, D54, tumor protein D52-like 2, DKFZp686A1765, hD54, HCCR-binding protein 2

Official Symbol: TPD52L2

Accession Number(s): NP_955392.1; NP_955393.1; NP_955394.1; NP_955395.1; NP_003279.2; NP_955391.1

Human GeneID(s): [7165](#)

Important Comments: This antibody is expected to recognise all reported isoforms (NP_955392.1; NP_955393.1; NP_955394.1; NP_955395.1; NP_003279.2; NP_955391.1).

Immunogen

Peptide with sequence C-SGDKPLSDPAP, from the C Terminus of the protein sequence according to NP_955392.1; NP_955393.1; NP_955394.1; NP_955395.1; NP_003279.2; NP_955391.1.

Please note the [peptide](#) is available for sale.

Purification and Storage

Purified from goat serum by ammonium sulphate precipitation followed by antigen affinity chromatography using the immunizing peptide.

Supplied at 0.5 mg/ml in Tris saline, 0.02% sodium azide, pH7.3 with 0.5% bovine serum albumin.

Aliquot and store at -20°C. Minimize freezing and thawing.

Applications Tested

Peptide ELISA: antibody detection limit dilution 1:16000.

Western blot: Approx 28kDa band observed in Human Breast Cancer and Human Brain lysates (calculated MW of 24.9kDa according to NP_955392.1). Recommended concentration: 0.1-0.3µg/ml. Primary incubation was 1 hour. See also our D52 and D53 products.

IHC: Paraffin embedded Human Spleen, Tonsil and Brain (Cortex). Recommended concentration: 3.75µg/ml.

Additional validation: This antibody has been successfully used in the following paper: Sikorski et al. (2018) PMID: 30377371.

Species Reactivity

Tested: Human

Expected from sequence similarity: Human

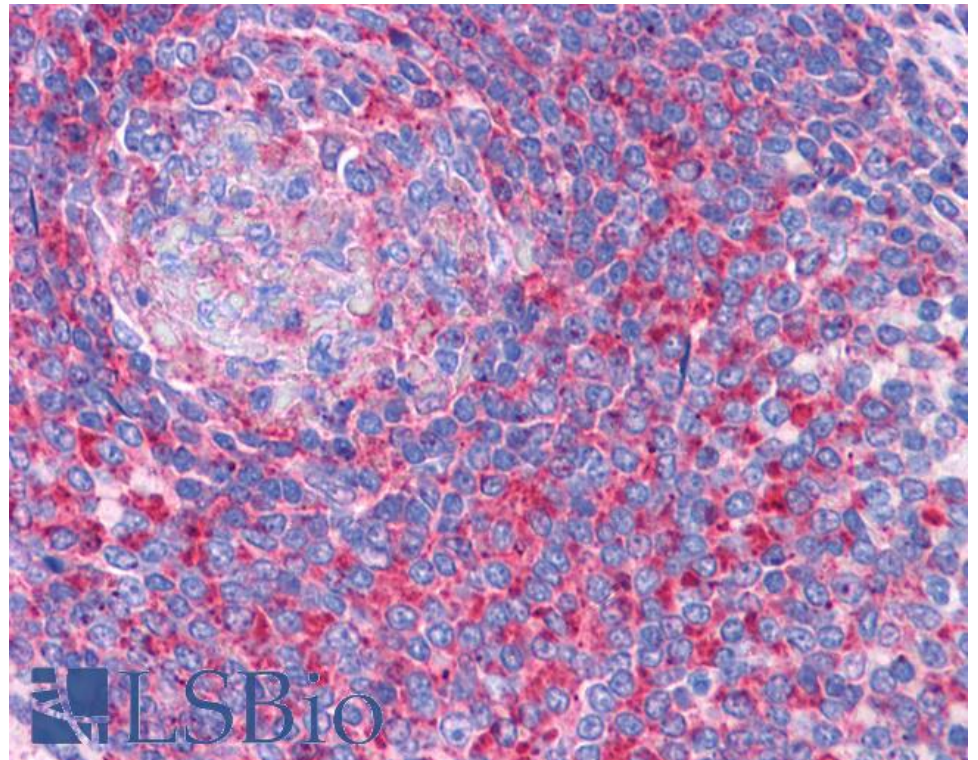
Specific Reference

This antibody has been successfully used in the following paper:

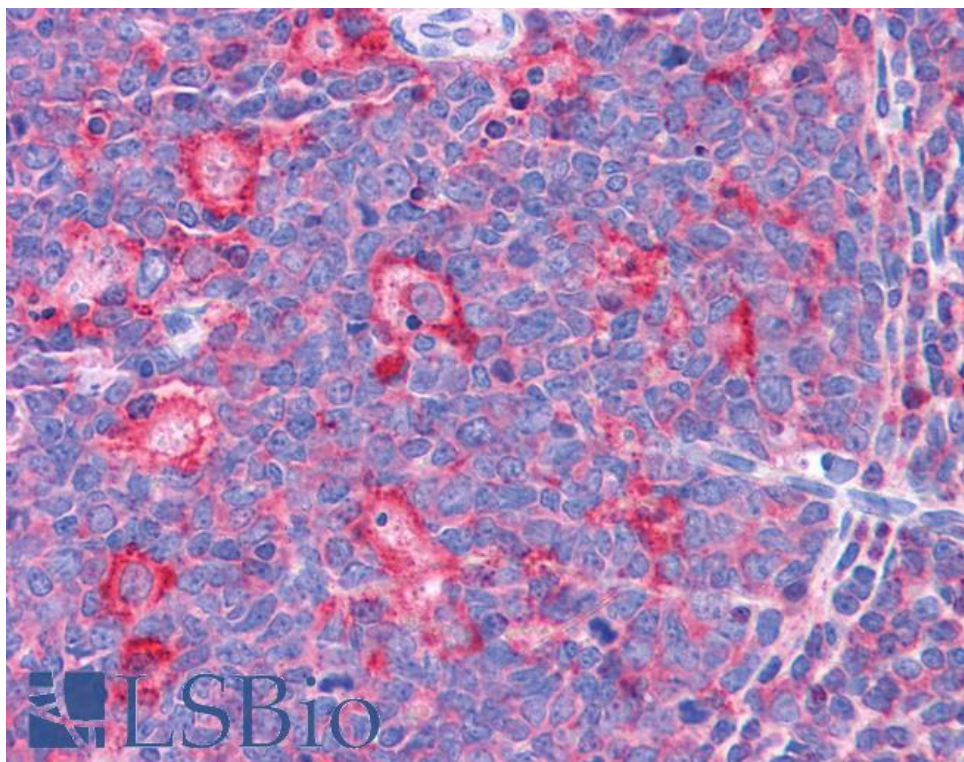
Krzysztof Sikorski, Adi Mehta, Marit Inngjerdingen, Flourina Thakor, Simon Kling, Tomas Kalina, Tuula A. Nyman, Maria Ekman Stensland, Wei Zhou, Gustavo A. De Souza, Lars Holden, Jan Stuchly, Markus Templin and Fridtjof Lund-Johansen
A high-throughput pipeline for validation of antibodies
Nat Methods. 2018 Nov;15(11):909-912
PMID: 30377371



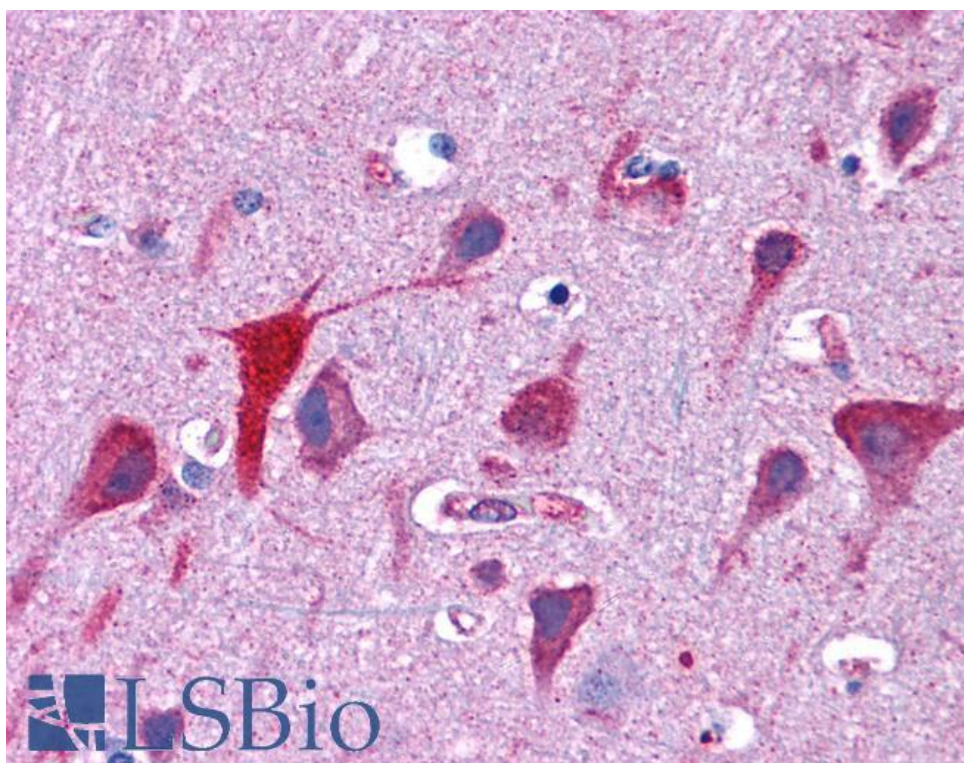
EB08025 (0.1 μ g/ml) staining of Human Breast Cancer lysate (35 μ g protein in RIPA buffer). Detected by chemiluminescence.



EB08025 (3.75 μ g/ml) staining of paraffin embedded Human Spleen. Steamed antigen retrieval with citrate buffer pH 6, AP-staining.



EB08025 (3.75µg/ml) staining of paraffin embedded Human Tonsil. Steamed antigen retrieval with citrate buffer pH 6, AP-staining.



EB08025 (3.75µg/ml) staining of paraffin embedded Human Cortex. Steamed antigen retrieval with citrate buffer pH 6, AP-staining.