



UK Office

Everest Biotech Ltd

Cherwell Innovation Centre
77 Heyford Park
Upper Heyford
Oxfordshire
OX25 5HD
UK

Enquiries:

info@everestbiotech.com

Sales:

sales@everestbiotech.com

Tech support:

support@everestbiotech.com

Tel: +44 (0)1869 238326

Fax: +44 (0)1869 238327

US Office

Everest Biotech c/o Abcore

405 Maple Street, Suite A106
Ramona,
CA 92065
USA

Inquiries:

info@everestbiotech.com

Sales:

usasales@everestbiotech.com

Tech support:

support@everestbiotech.com

Tel: 888-320-4628 (toll-free)

Fax: 888-841-9041

www.everestbiotech.com

**Research Use Only. Not for
diagnostic or therapeutic use.**

EB11011 - Goat Anti-TPH2 (aa16-29) Antibody

Size: 100µg specific antibody in 200µl



Target Protein

Principal Names: TPH2, tryptophan hydroxylase 2, ADHD7, FLJ37295, MGC138871, MGC138872, NTPH, neuronal tryptophan hydroxylase, tryptophan 5-hydroxylase 2, ADHD7, FLJ37295, MGC138871, MGC138872, neuronal tryptophan hydroxylase, NTPH, tryptophan 5-hydroxylase 2, tryptophan 5-monooxygenase 2, tryptophan hydroxylase 2, TPH2

Official Symbol: TPH2

Accession Number(s): NP_775489.2

Human GeneID(s): [121278](#)

Non-Human GeneID(s): 216343 (mouse), 317675 (rat)

Immunogen

Peptide with sequence RGFSLDSAVPEEHQ-C, from the N Terminus of the protein sequence according to NP_775489.2.

Please note the [peptide](#) is available for sale.

Purification and Storage

Purified from goat serum by ammonium sulphate precipitation followed by antigen affinity chromatography using the immunizing peptide.

Supplied at 0.5 mg/ml in Tris saline, 0.02% sodium azide, pH7.3 with 0.5% bovine serum albumin.

Aliquot and store at -20°C. Minimize freezing and thawing.

Applications Tested

Peptide ELISA: antibody detection limit dilution 1:128000.

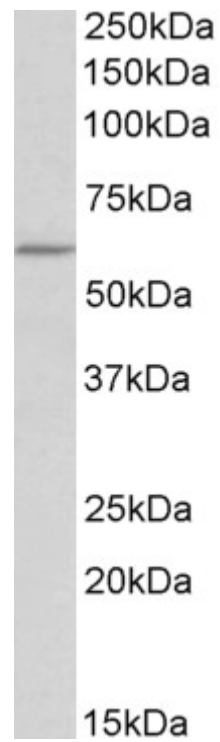
Western blot: Approx 60kDa band observed in lysates of cell line HEK293 (calculated MW of 56.1kDa according to NP_775489.2). Recommended concentration: 0.5-2µg/ml. Primary incubation was 1 hour.

IHC: Cryosections of Human Hypothalamus. Optimal dilution 1:5000.

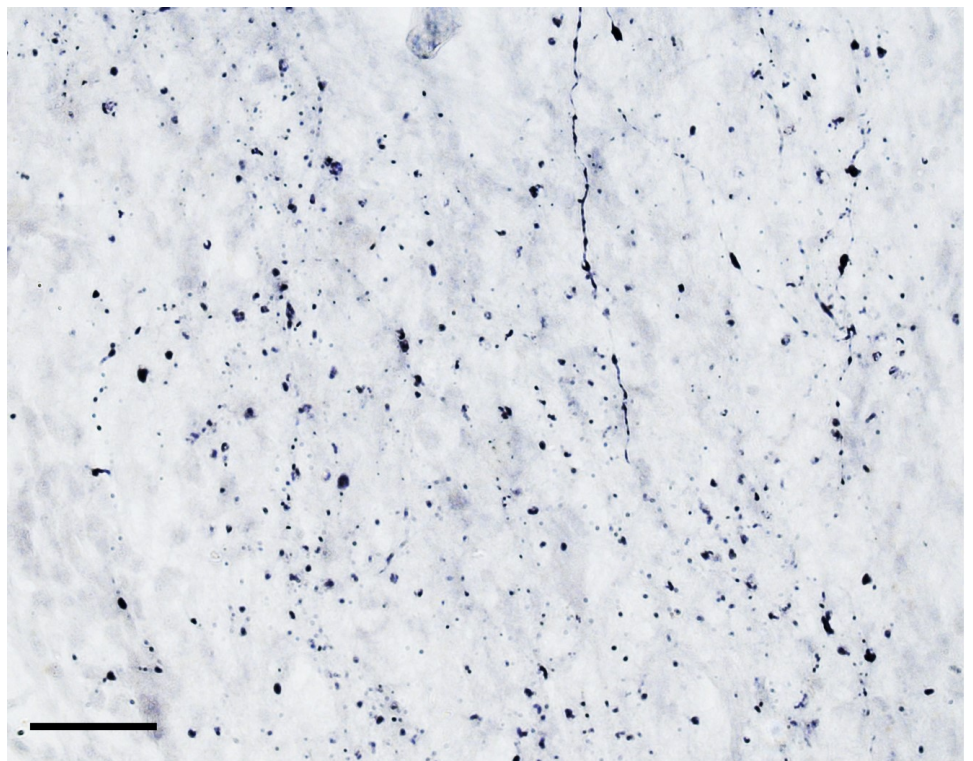
Species Reactivity

Tested: Human

Expected from sequence similarity: Human, Mouse, Rat, Dog, Pig, Cow



EB11011 (0.5µg/ml) staining of HEK293 lysate (35µg protein in RIPA buffer). Detected by chemiluminescence.



EB11011 (scale bar: 50 µm) immunostaining of TPH2 processes in cryosection of the infundibular nucleus of an immersion-fixed (4% PFA) human hypothalamus. HRP-staining with Ni-DAB, after Biotin-SP-anti-goat (IgG) method. Data obtained by Drs. Éva Rumpler and Erik Hrabovszky, Inst, Exp, Med, Budapest, Hungary.