



UK Office

Everest Biotech Ltd

Cherwell Innovation Centre
77 Heyford Park
Upper Heyford
Oxfordshire
OX25 5HD
UK

Enquiries:

info@everestbiotech.com

Sales:

sales@everestbiotech.com

Tech support:

support@everestbiotech.com

Tel: +44 (0)1869 238326

Fax: +44 (0)1869 238327

US Office

Everest Biotech c/o Abcore

405 Maple Street, Suite A106
Ramona,
CA 92065
USA

Inquiries:

info@everestbiotech.com

Sales:

usasales@everestbiotech.com

Tech support:

support@everestbiotech.com

Tel: 888-320-4628 (toll-free)

Fax: 888-841-9041

www.everestbiotech.com

**Research Use Only. Not for
diagnostic or therapeutic use.**

EB08029 - Goat Anti-TRAF3IP2 Antibody

Size: 100µg specific antibody in 200µl



Target Protein

Principal Names: TRAF3IP2, TRAF3 interacting protein 2, ACT1, C6orf4, C6orf5, C6orf6, CIKS, DKFZP586G0522, MGC3581, NFkB-activating protein ACT1, OTTHUMP00000040422, connection to IKK and SAPK/JNK

Official Symbol: TRAF3IP2

Accession Number(s): NP_679211.1; NP_001157753.1

Human GeneID(s): [10758](#)

Important Comments: This antibody is expected to recognise reported isoforms 2 and 3 (NP_679211.1; NP_001157753.1).

Immunogen

Peptide with sequence C-PDTGHDSKSDQ, from the internal region of the protein sequence according to NP_679211.1; NP_001157753.1.

Please note the [peptide](#) is available for sale.

Purification and Storage

Purified from goat serum by ammonium sulphate precipitation followed by antigen affinity chromatography using the immunizing peptide.

Supplied at 0.5 mg/ml in Tris saline, 0.02% sodium azide, pH7.3 with 0.5% bovine serum albumin.

Aliquot and store at -20°C. Minimize freezing and thawing.

Applications Tested

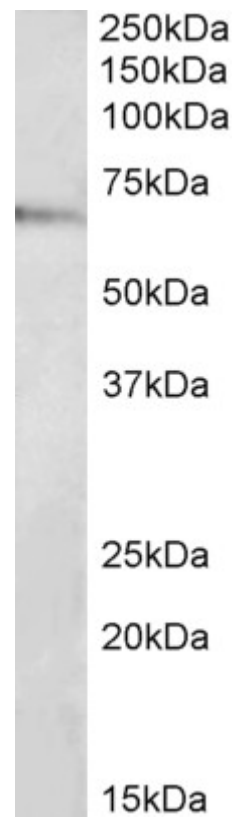
Peptide ELISA: antibody detection limit dilution 1:2000.

Western blot: Approx 65kDa band observed in lysates of cell line MCF7 (calculated MW of 63.6kDa according to NP_679211.1). Recommended concentration: 1-3µg/ml.

Species Reactivity

Tested: Human

Expected from sequence similarity: Human, Mouse, Rat



EB08029 (2 μ g/ml) staining of MCF7 lysate (35 μ g protein in RIPA buffer). Primary incubation was 1 hour.
Detected by chemiluminescence.