



UK Office

Everest Biotech Ltd

Cherwell Innovation Centre
77 Heyford Park
Upper Heyford
Oxfordshire
OX25 5HD
UK

Enquiries:

info@everestbiotech.com

Sales:

sales@everestbiotech.com

Tech support:

support@everestbiotech.com

Tel: +44 (0)1869 238326

Fax: +44 (0)1869 238327

US Office

Everest Biotech c/o Abcore

405 Maple Street, Suite A106
Ramona,
CA 92065
USA

Inquiries:

info@everestbiotech.com

Sales:

usasales@everestbiotech.com

Tech support:

support@everestbiotech.com

Tel: 888-320-4628 (toll-free)

Fax: 888-841-9041

www.everestbiotech.com

**Research Use Only. Not for
diagnostic or therapeutic use.**

EB10756 - Goat Anti-Transcortin / CBG (rat) Antibody

Size: 100µg specific antibody in 200µl



Target Protein

Principal Names: Serpina6, serine (or cysteine) peptidase inhibitor, clade A, member 6, MGC112780, Cbg, corticosteroid binding globulin, corticosteroid-binding globulin, serine (or cysteine) proteinase inhibitor, clade A, (alpha-1 antiproteinase, antitrypsin) member 6, serpin A6, transcortin

Official Symbol: Serpina6

Accession Number(s): NP_001009663.1

Non-Human GeneID(s): 299270 (rat)

Immunogen

Peptide with sequence C-KASQQINQHVKDKT, from the internal region of the protein sequence according to NP_001009663.1.

Please note the [peptide](#) is available for sale.

Purification and Storage

Purified from goat serum by ammonium sulphate precipitation followed by antigen affinity chromatography using the immunizing peptide.

Supplied at 0.5 mg/ml in Tris saline, 0.02% sodium azide, pH7.3 with 0.5% bovine serum albumin.

Aliquot and store at -20°C. Minimize freezing and thawing.

Applications Tested

Peptide ELISA: antibody detection limit dilution 1:16000.

Western blot: Approx 55kDa band observed in Rat Liver lysates (calculated MW of 44.7kDa according to NP_001009663.1). The observed molecular weight corresponds to earlier findings in literature with different antibodies (Richard et al, Endocrinology. 2010 Feb;151(2):649-59; PMID: 20022933). Recommended concentration: 0.03-0.1µg/ml.

Species Reactivity

Tested: Rat

Expected from sequence similarity: Rat

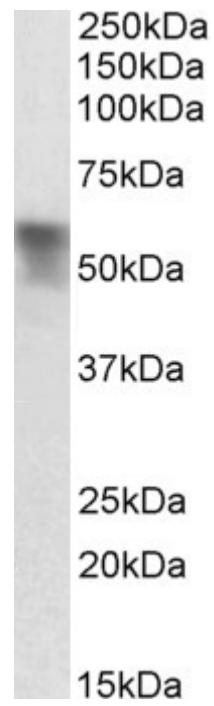
Specific Reference

Romero Mdel M, Holmgren-Holm F, Grasa Mdel M, Esteve M, Remesar X, Fernández-López JA, Alemany M.

Modulation in Wistar rats of blood corticosterone compartmentation by sex and a cafeteria diet.

PLoS One. 2013;8(2):e57342.

PMID: 23451210



EB10756 (0.03 μ g/ml) staining of Rat Liver lysate (35 μ g protein in RIPA buffer). Primary incubation was 1 hour.
Detected by chemiluminescence.