



## UK Office

### Everest Biotech Ltd

Cherwell Innovation Centre  
77 Heyford Park  
Upper Heyford  
Oxfordshire  
OX25 5HD  
UK

Enquiries:

[info@everestbiotech.com](mailto:info@everestbiotech.com)

Sales:

[sales@everestbiotech.com](mailto:sales@everestbiotech.com)

Tech support:

[support@everestbiotech.com](mailto:support@everestbiotech.com)

Tel: +44 (0)1869 238326

[www.everestbiotech.com](http://www.everestbiotech.com)

**Research Use Only. Not for  
diagnostic or therapeutic use.**

## EB12261 - Goat Anti-Transcription factor E2F1 (aa314-327) Antibody

Size: 100µg specific antibody in 200µl



### Target Protein

**Principal Names:** E2F1, E2F transcription factor 1, E2F-1, RBAP1, RBBP3, RBP3, PBR3, PRB-binding protein E2F-1, RBAP-1, RBBP-3, retinoblastoma-associated protein 1, retinoblastoma-binding protein 3, transcription factor E2F1

**Official Symbol:** E2F1

**Accession Number(s):** NP\_005216.1

**Human GeneID(s):** [1869](#)

### Immunogen

Peptide with sequence C-QEVTSEEENRATDS, from the internal region of the protein sequence according to NP\_005216.1.

Please note the [peptide](#) is available for sale.

### Purification and Storage

Purified from goat serum by ammonium sulphate precipitation followed by antigen affinity chromatography using the immunizing peptide.

Supplied at 0.5 mg/ml in Tris saline, 0.02% sodium azide, pH7.3 with 0.5% bovine serum albumin.

Aliquot and store at -20°C. Minimize freezing and thawing.

### Applications Tested

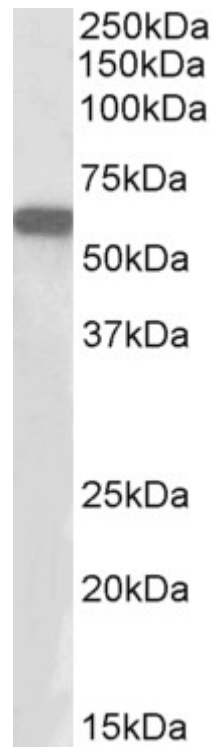
**Peptide ELISA:** antibody detection limit dilution 1:128000.

**Western blot:** Approx 60kDa band observed in nuclear lysates of cell line HeLa (calculated MW of 46.9kDa according to NP\_005216.1). Recommended concentration: 1-3µg/ml.

### Species Reactivity

**Tested:** Human

**Expected from sequence similarity:** Human



EB12261 (1 $\mu$ g/ml) staining of HeLa nuclear lysate (35 $\mu$ g protein in RIPA buffer). Primary incubation was 1 hour.  
Detected by chemiluminescence.