



## UK Office

### Everest Biotech Ltd

Cherwell Innovation Centre  
77 Heyford Park  
Upper Heyford  
Oxfordshire  
OX25 5HD  
UK

Enquiries:

[info@everestbiotech.com](mailto:info@everestbiotech.com)

Sales:

[sales@everestbiotech.com](mailto:sales@everestbiotech.com)

Tech support:

[support@everestbiotech.com](mailto:support@everestbiotech.com)

Tel: +44 (0)1869 238326

[www.everestbiotech.com](http://www.everestbiotech.com)

**Research Use Only. Not for  
diagnostic or therapeutic use.**

## EB12262 - Goat Anti-Transcription factor E2F4 Antibody

Size: 100µg specific antibody in 200µl



### Target Protein

**Principal Names:** E2F4, E2F transcription factor 4, p107/p130-binding, E2F-4, p107/p130-binding protein, transcription factor E2F4

**Official Symbol:** E2F4

**Accession Number(s):** NP\_001941.2

**Human GeneID(s):** [1874](#)

**Non-Human GeneID(s):** 104394 (mouse), 100360427 (rat)

### Immunogen

Peptide with sequence C-PKELSEIFDPTR, from the internal region of the protein sequence according to NP\_001941.2.

Please note the [peptide](#) is available for sale.

### Purification and Storage

Purified from goat serum by ammonium sulphate precipitation followed by antigen affinity chromatography using the immunizing peptide.

Supplied at 0.5 mg/ml in Tris saline, 0.02% sodium azide, pH7.3 with 0.5% bovine serum albumin.

Aliquot and store at -20°C. Minimize freezing and thawing.

### Applications Tested

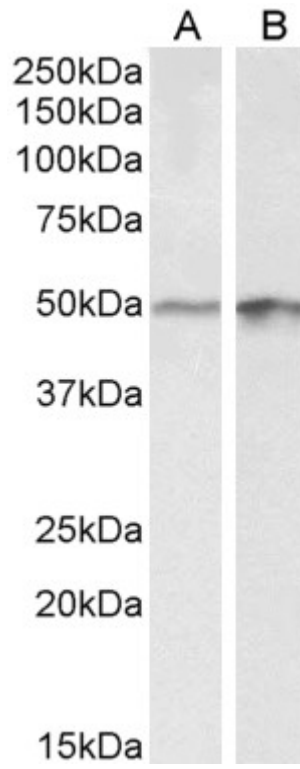
**Peptide ELISA:** antibody detection limit dilution 1:128000.

**Western blot:** Approx 50kDa band observed in lysates of cell lines A431 and HeLa (calculated MW of 44.0kDa according to NP\_001941.2). Recommended concentration: 0.1-0.3µg/ml. Approx 40+50kDa bands observed in Pig Brain and Heart lysates (calculated MW of 43.2kDa according to Pig XP\_003126981.3). Recommended concentration: 0.01-0.003µg/ml.

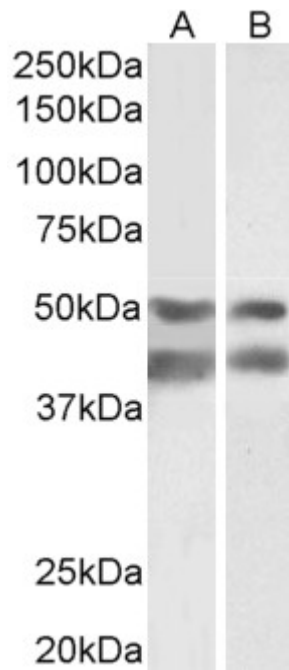
### Species Reactivity

**Tested:** Human, Pig

**Expected from sequence similarity:** Human, Mouse, Dog, Pig, Cow



EB12262 (0.3 $\mu$ g/ml) staining of A43 (A) and HeLa (B) lysates (35 $\mu$ g protein in RIPA buffer). Primary incubation was 1 hour. Detected by chemiluminescence.



EB12262 (0.003 $\mu$ g/ml) staining of Pig Brain (A) and Heart (B) lysates (35 $\mu$ g protein in RIPA buffer). Primary incubation was 1 hour. Detected by chemiluminescence