



## UK Office

### Everest Biotech Ltd

Cherwell Innovation Centre  
77 Heyford Park  
Upper Heyford  
Oxfordshire  
OX25 5HD  
UK

Enquiries:

[info@everestbiotech.com](mailto:info@everestbiotech.com)

Sales:

[sales@everestbiotech.com](mailto:sales@everestbiotech.com)

Tech support:

[support@everestbiotech.com](mailto:support@everestbiotech.com)

Tel: +44 (0)1869 238326

[www.everestbiotech.com](http://www.everestbiotech.com)

**Research Use Only. Not for  
diagnostic or therapeutic use.**

## EB11952 - Goat Anti-Transferrin receptor 1 Antibody

Size: 100µg specific antibody in 200µl



### Target Protein

**Principal Names:** TFRC, transferrin receptor (p90, CD71), CD71, T9, TFR, TFR1, TR, TRFR, p90, OTTHUMP00000208523, OTTHUMP00000208524,

OTTHUMP00000208525, transferrin receptor protein 1

**Official Symbol:** TFRC

**Accession Number(s):** NP\_003225.2

**Human GeneID(s):** [7037](#)

**Non-Human GeneID(s):** 22042 (mouse), 64678 (rat)

**Important Comments:** Reported variants represent identical protein: NP\_003225.2, NP\_001121620.1.

### Immunogen

Peptide with sequence TRFSLARQVDGNSH-C, from the N Terminus of the protein sequence according to NP\_003225.2.

Please note the [peptide](#) is available for sale.

### Purification and Storage

Purified from goat serum by ammonium sulphate precipitation followed by antigen affinity chromatography using the immunizing peptide.

Supplied at 0.5 mg/ml in Tris saline, 0.02% sodium azide, pH7.3 with 0.5% bovine serum albumin.

Aliquot and store at -20°C. Minimize freezing and thawing.

### Applications Tested

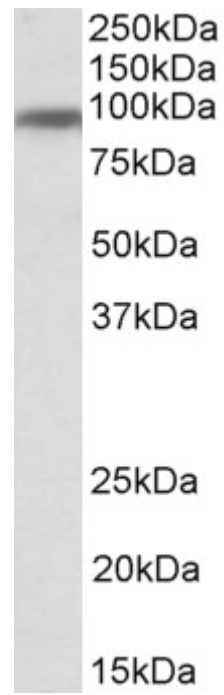
**Peptide ELISA:** antibody detection limit dilution 1:128000.

**Western blot:** Approx 90kDa band observed in Human Breast lysates (calculated MW of 84.9kDa according to NP\_003225.2). Recommended concentration: 1-3µg/ml.

### Species Reactivity

**Tested:** Human

**Expected from sequence similarity:** Human, Mouse, Rat, Dog, Pig, Cow



EB11952 (1 $\mu$ g/ml) staining of Human Breast lysate (35 $\mu$ g protein in RIPA buffer). Primary incubation was 1 hour.  
Detected by chemiluminescence.