



UK Office

Everest Biotech Ltd

Cherwell Innovation Centre
77 Heyford Park
Upper Heyford
Oxfordshire
OX25 5HD
UK

Enquiries:

info@everestbiotech.com

Sales:

sales@everestbiotech.com

Tech support:

support@everestbiotech.com

Tel: +44 (0)1869 238326

Fax: +44 (0)1869 238327

US Office

Everest Biotech c/o Abcore

405 Maple Street, Suite A106
Ramona,
CA 92065
USA

Inquiries:

info@everestbiotech.com

Sales:

usasales@everestbiotech.com

Tech support:

support@everestbiotech.com

Tel: 888-320-4628 (toll-free)

Fax: 888-841-9041

www.everestbiotech.com

**Research Use Only. Not for
diagnostic or therapeutic use.**

EB11105 - Goat Anti-Trib1 (mouse) (aa304-317) Antibody

Size: 100µg specific antibody in 200µl



Target Protein

Principal Names: A530090O15Rik, Trb1, TRB-1, tribbles homolog 1, tribbles homolog 1 (Drosophila), Trib1

Official Symbol: Trib1

Accession Number(s): NP_653132.1

Human GeneID(s): [10221](#)

Non-Human GeneID(s): 211770 (mouse), 78969 (rat)

Immunogen

Peptide with sequence PEHVSPKARCLIRS, from the internal region of the protein sequence according to NP_653132.1.

Please note the [peptide](#) is available for sale.

Purification and Storage

Purified from goat serum by ammonium sulphate precipitation followed by antigen affinity chromatography using the immunizing peptide.

Supplied at 0.5 mg/ml in Tris saline, 0.02% sodium azide, pH7.3 with 0.5% bovine serum albumin.

Aliquot and store at -20°C. Minimize freezing and thawing.

Applications Tested

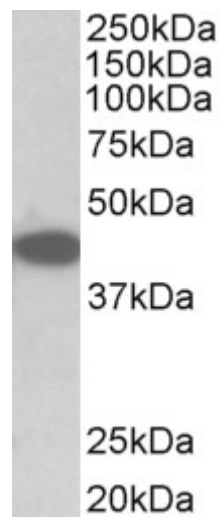
Peptide ELISA: antibody detection limit dilution 1:8000.

Western blot: Approx 42kDa band observed in lysates of cell line NIH3T3 (calculated MW of 41.3kDa according to NP_653132.1). Recommended concentration: 0.1-0.3µg/ml.

Species Reactivity

Tested: Mouse

Expected from sequence similarity: Human, Mouse, Rat, Dog, Cow



EB11105 (0.1µg/ml) staining of NIH3T3 lysate (35µg protein in RIPA buffer). Primary incubation was 1 hour.
Detected by chemiluminescence.