



UK Office

Everest Biotech Ltd

Cherwell Innovation Centre
77 Heyford Park
Upper Heyford
Oxfordshire
OX25 5HD
UK

Enquiries:

info@everestbiotech.com

Sales:

sales@everestbiotech.com

Tech support:

support@everestbiotech.com

Tel: +44 (0)1869 238326

Fax: +44 (0)1869 238327

US Office

Everest Biotech c/o Abcore

405 Maple Street, Suite A106
Ramona,
CA 92065
USA

Inquiries:

info@everestbiotech.com

Sales:

usasales@everestbiotech.com

Tech support:

support@everestbiotech.com

Tel: 888-320-4628 (toll-free)

Fax: 888-841-9041

www.everestbiotech.com

**Research Use Only. Not for
diagnostic or therapeutic use.**

EB05931 - Goat Anti-TRIM4 Antibody

Size: 100µg specific antibody in 200µl



Target Protein

Principal Names: TRIM4, RNF87, tripartite motif-containing 4, tripartite motif protein 4, tripartite motif protein TRIM4, tripartite motif protein TRIM4 isoform alpha, tripartite motif protein 4

Official Symbol: TRIM4

Accession Number(s): NP_148977.1; NP_149082.1

Human GeneID(s): [89122](#)

Important Comments: This antibody is expected to recognise both reported human isoforms (as represented by NP_148977 and NP_149082).

Immunogen

Peptide with sequence C-ASLVIPPVTDRK, from the C Terminus of the protein sequence according to NP_148977.1; NP_149082.1.

Please note the [peptide](#) is available for sale.

Purification and Storage

Purified from goat serum by ammonium sulphate precipitation followed by antigen affinity chromatography using the immunizing peptide.

Supplied at 0.5 mg/ml in Tris saline, 0.02% sodium azide, pH7.3 with 0.5% bovine serum albumin.

Aliquot and store at -20°C. Minimize freezing and thawing.

Applications Tested

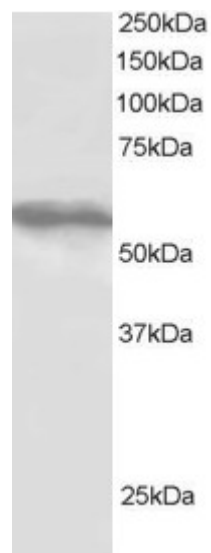
Peptide ELISA: antibody detection limit dilution 1:32000.

Western blot: Approx 55-60kDa band observed in HepG2 whole cell lysate (predicted MW of 58kDa and 55kDa according to NP_148977 and NP_149082). Recommended for use at 1µg/ml.

Species Reactivity

Tested: Human

Expected from sequence similarity: Human



EB05931 staining (1 μ g/ml) of HepG2 lysate (RIPA buffer, 30 μ g total protein per lane). Primary incubated for 1 hour. Detected by western blot using chemiluminescence.