



## UK Office

### Everest Biotech Ltd

Cherwell Innovation Centre  
77 Heyford Park  
Upper Heyford  
Oxfordshire  
OX25 5HD  
UK

Enquiries:

[info@everestbiotech.com](mailto:info@everestbiotech.com)

Sales:

[sales@everestbiotech.com](mailto:sales@everestbiotech.com)

Tech support:

[support@everestbiotech.com](mailto:support@everestbiotech.com)

Tel: +44 (0)1869 238326

Fax: +44 (0)1869 238327

## US Office

### Everest Biotech c/o Abcore

405 Maple Street, Suite A106  
Ramona,  
CA 92065  
USA

Inquiries:

[info@everestbiotech.com](mailto:info@everestbiotech.com)

Sales:

[usasales@everestbiotech.com](mailto:usasales@everestbiotech.com)

Tech support:

[support@everestbiotech.com](mailto:support@everestbiotech.com)

Tel: 888-320-4628 (toll-free)

Fax: 888-841-9041

[www.everestbiotech.com](http://www.everestbiotech.com)

**Research Use Only. Not for  
diagnostic or therapeutic use.**

## EB09901 - Goat Anti-TRIM71 (aa390-402) Antibody

Size: 100µg specific antibody in 200µl



### Target Protein

**Principal Names:** abnormal cell LINEage LIN-41, homolog of C. elegans Lin-41, LIN41, LIN-41, tripartite motif-containing 71, TRIM71

**Official Symbol:** TRIM71

**Accession Number(s):** NP\_001034200.1

**Human GeneID(s):** [131405](#)

**Non-Human GeneID(s):** 636331 (mouse), 301042 (rat)

### Immunogen

Peptide with sequence C-RQVKAKSLYLQVE, from the internal region of the protein sequence according to NP\_001034200.1.

Please note the [peptide](#) is available for sale.

### Purification and Storage

Purified from goat serum by ammonium sulphate precipitation followed by antigen affinity chromatography using the immunizing peptide.

Supplied at 0.5 mg/ml in Tris saline, 0.02% sodium azide, pH7.3 with 0.5% bovine serum albumin.

Aliquot and store at -20°C. Minimize freezing and thawing.

### Applications Tested

**Peptide ELISA:** antibody detection limit dilution 1:8000.

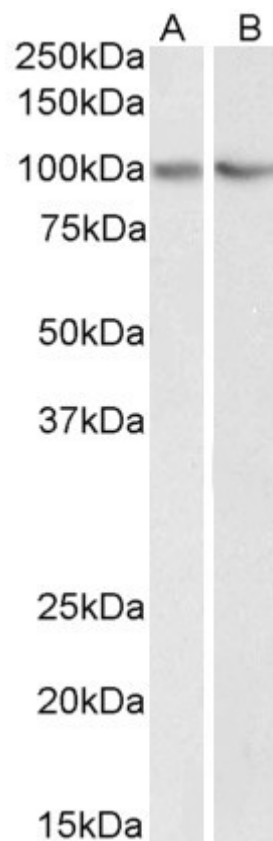
**Western blot:** Approx 100kDa band observed in lysates of the cell lines HEK293 and NIH3T3 (calculated MW of 93.4kDa according to Human NP\_001034200.1 and 92.1kDa according to Mouse NP\_001035968.1). The observed molecular weight corresponds to findings with EB09902, a product of different design reacting to a different part of the same protein. Recommended concentration: 0.3-1µg/ml.

**IHC:** Paraffin embedded Human Brain (Cerebellum). Recommended concentration: 3.75µg/ml.

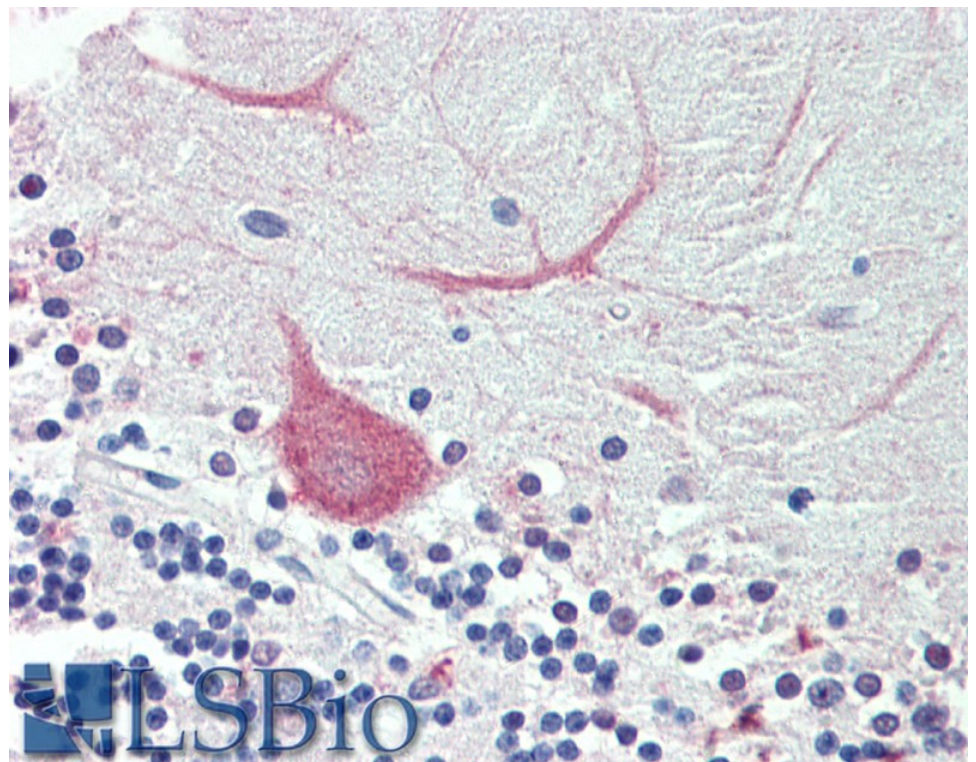
### Species Reactivity

**Tested:** Human, Mouse

**Expected from sequence similarity:** Human, Mouse, Rat, Dog, Cow



EB09901 (0.3 $\mu$ g/ml) staining of HEK293 (A) and NIH3T3 (B) lysate (35 $\mu$ g protein in RIPA buffer). Primary incubation was 1 hour. Detected by chemiluminescence.



EB09901 (3.75 $\mu$ g/ml) staining of paraffin embedded Human Cerebellum. Steamed antigen retrieval with citrate buffer pH 6, AP-staining.