



## UK Office

### Everest Biotech Ltd

Cherwell Innovation Centre  
77 Heyford Park  
Upper Heyford  
Oxfordshire  
OX25 5HD  
UK

Enquiries:

[info@everestbiotech.com](mailto:info@everestbiotech.com)

Sales:

[sales@everestbiotech.com](mailto:sales@everestbiotech.com)

Tech support:

[support@everestbiotech.com](mailto:support@everestbiotech.com)

Tel: +44 (0)1869 238326

Fax: +44 (0)1869 238327

## US Office

### Everest Biotech c/o Abcore

405 Maple Street, Suite A106  
Ramona,  
CA 92065  
USA

Inquiries:

[info@everestbiotech.com](mailto:info@everestbiotech.com)

Sales:

[usasales@everestbiotech.com](mailto:usasales@everestbiotech.com)

Tech support:

[support@everestbiotech.com](mailto:support@everestbiotech.com)

Tel: 888-320-4628 (toll-free)

Fax: 888-841-9041

[www.everestbiotech.com](http://www.everestbiotech.com)

**Research Use Only. Not for  
diagnostic or therapeutic use.**

## EB12417 - Goat Anti-tropomyosin 4 / TPM4 Antibody

Size: 100µg specific antibody in 200µl



### Target Protein

**Principal Names:** TPM4, tropomyosin 4, TM30p1, tropomyosin alpha-4 chain, tropomyosin-4

**Official Symbol:** TPM4

**Accession Number(s):** NP\_001138632.1; NP\_003281.1

**Human GeneID(s):** [7171](#)

**Non-Human GeneID(s):** 326618 (mouse), 24852 (rat)

**Important Comments:** This antibody is expected to recognize both reported isoforms (NP\_001138632.1; NP\_003281.1).

### Immunogen

Peptide with sequence C-ENVGLHQTLTDQ, from the C Terminus of the protein sequence according to NP\_001138632.1; NP\_003281.1.

Please note the [peptide](#) is available for sale.

### Purification and Storage

Purified from goat serum by ammonium sulphate precipitation followed by antigen affinity chromatography using the immunizing peptide.

Supplied at 0.5 mg/ml in Tris saline, 0.02% sodium azide, pH7.3 with 0.5% bovine serum albumin.

Aliquot and store at -20°C. Minimize freezing and thawing.

### Applications Tested

**Peptide ELISA:** antibody detection limit dilution 1:128000.

**Western blot:** Approx 32kDa band observed in Human Platelets, Pig Heart and in NIH3T3 lysates (calculated MW of 32.7kDa according to NP\_001138632.1).

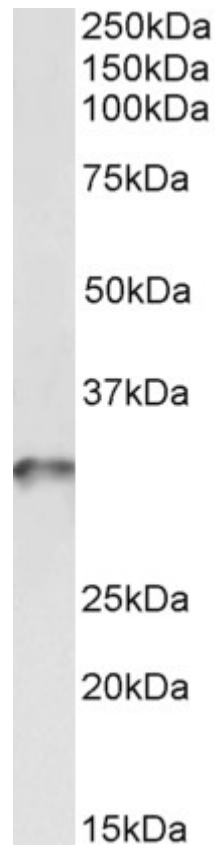
Recommended concentration: 0.1-0.3µg/ml. Primary incubation was 1 hour.

**IHC:** Paraffin embedded Human Placenta and Prostate. Recommended concentration: 2.5µg/ml.

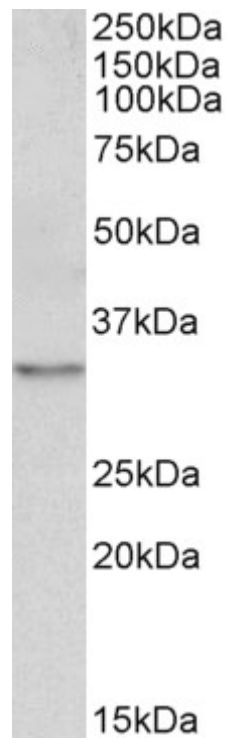
### Species Reactivity

**Tested:** Human, Mouse, Pig

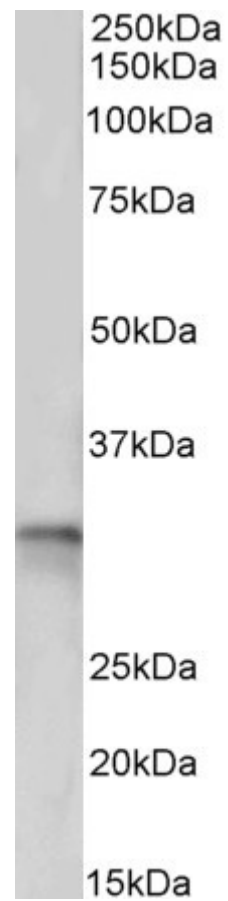
**Expected from sequence similarity:** Human, Mouse, Rat, Dog, Pig, Cow



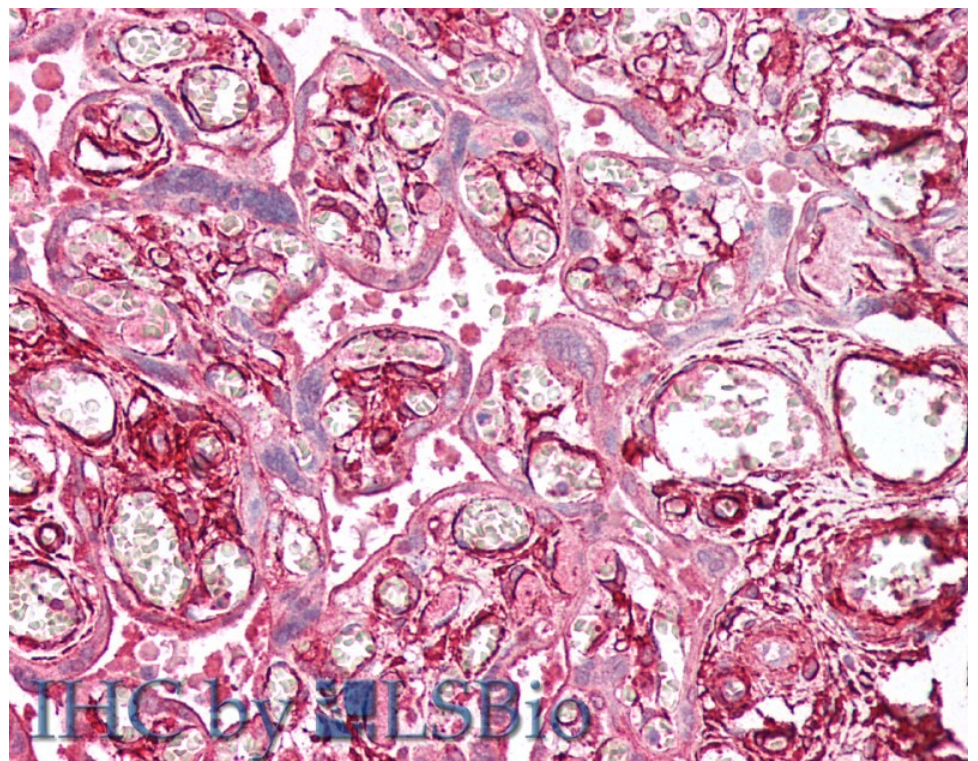
EB12417 (0.03 $\mu$ g/ml) staining of Human Platelets lysate (35 $\mu$ g protein in RIPA buffer). Detected by chemiluminescence.



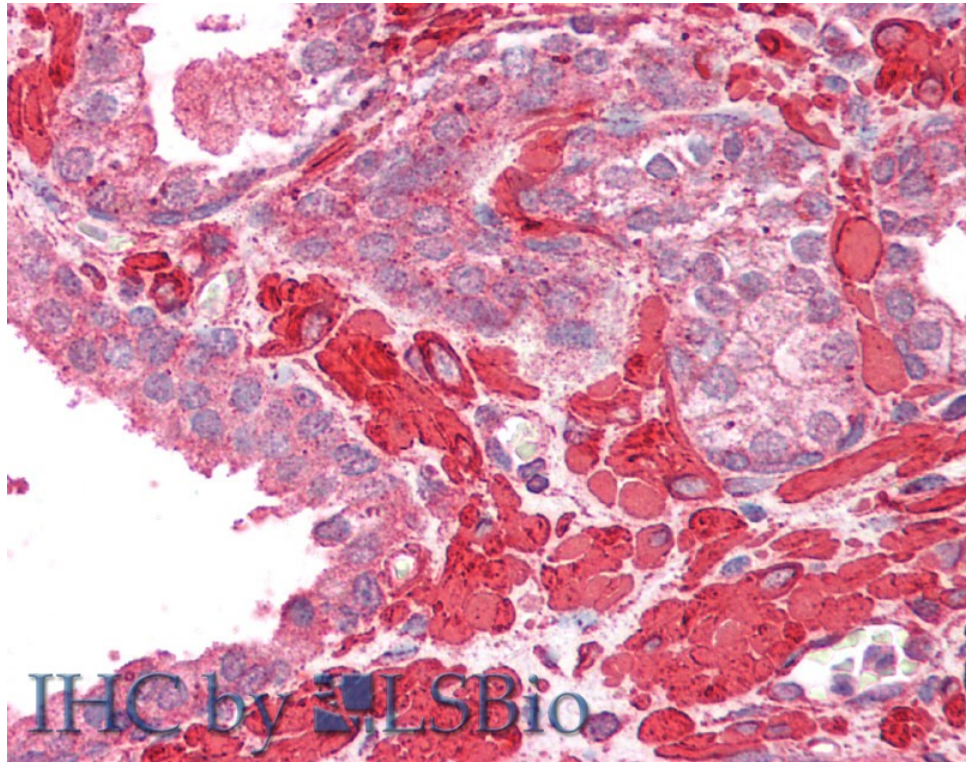
EB12417 (0.1 $\mu$ g/ml) staining of NIH3T3 lysate (35 $\mu$ g protein in RIPA buffer). Detected by chemiluminescence.



EB12417 (0.5 $\mu$ g/ml) staining of Pig Heart lysate (35 $\mu$ g protein in RIPA buffer). Detected by chemiluminescence.



EB12417 (2.5 $\mu$ g/ml) staining of paraffin embedded Human Placenta. Steamed antigen retrieval with citrate buffer pH 6, AP-staining.



EB12417 (2.5µg/ml) staining of paraffin embedded Human Prostate. Steamed antigen retrieval with citrate buffer pH 6, AP-staining.