



UK Office

Everest Biotech Ltd

Cherwell Innovation Centre
77 Heyford Park
Upper Heyford
Oxfordshire
OX25 5HD
UK

Enquiries:

info@everestbiotech.com

Sales:

sales@everestbiotech.com

Tech support:

support@everestbiotech.com

Tel: +44 (0)1869 238326

www.everestbiotech.com

**Research Use Only. Not for
diagnostic or therapeutic use.**

EB08831 - Goat Anti-TRPC6 (C-term) Antibody

Size: 100µg specific antibody in 200µl



Target Protein

Principal Names: TRPC6, transient receptor potential cation channel, subfamily C, member 6, FLJ11098, FLJ14863, FSGS2, TRP6, transient receptor potential channel 6

Official Symbol: TRPC6

Accession Number(s): NP_004612.2

Human GeneID(s): [7225](#)

Immunogen

Peptide with sequence C-EKLSMEPNQEETNR, from the C Terminus of the protein sequence according to NP_004612.2.

Please note the [peptide](#) is available for sale.

Purification and Storage

Purified from goat serum by ammonium sulphate precipitation followed by antigen affinity chromatography using the immunizing peptide.

Supplied at 0.5 mg/ml in Tris saline, 0.02% sodium azide, pH7.3 with 0.5% bovine serum albumin.

Aliquot and store at -20°C. Minimize freezing and thawing.

Applications Tested

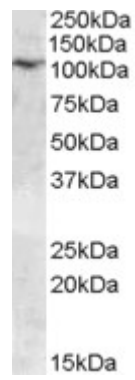
Peptide ELISA: antibody detection limit dilution 1:128000.

Western blot: Approx. 110kDa band observed in Human Placenta lysates (calculated MW of 106Da according to NP_004612.2). Recommended concentration: 0.03-0.1µg/ml.

Species Reactivity

Tested: Human

Expected from sequence similarity: Human, Cow



EB08831 (0.03 μ g/ml) staining of Human Placenta lysate (35 μ g protein in RIPA buffer). Primary incubation was 1 hour. Detected by chemiluminescence.