



UK Office

Everest Biotech Ltd

Cherwell Innovation Centre
77 Heyford Park
Upper Heyford
Oxfordshire
OX25 5HD
UK

Enquiries:

info@everestbiotech.com

Sales:

sales@everestbiotech.com

Tech support:

support@everestbiotech.com

Tel: +44 (0)1869 238326

www.everestbiotech.com

**Research Use Only. Not for
diagnostic or therapeutic use.**

EB08799 - Goat Anti-TRPV3 (aa762-773) Antibody

Size: 100µg specific antibody in 200µl



Target Protein

Principal Names: TRPV3, transient receptor potential cation channel, subfamily V, member 3, VRL3, vanilloid receptor 3, vanilloid receptor-related osmotically activated channel protein

Official Symbol: TRPV3

Accession Number(s): NP_659505.1; NP_001245134.1

Human GeneID(s): [162514](#)

Non-Human GeneID(s): 246788 (mouse), 497948 (rat)

Immunogen

Peptide with sequence C-NKIQDSSRNNSK, from the internal region (near C Terminus) of the protein sequence according to NP_659505.1; NP_001245134.1.

Please note the [peptide](#) is available for sale.

Purification and Storage

Purified from goat serum by ammonium sulphate precipitation followed by antigen affinity chromatography using the immunizing peptide.

Supplied at 0.5 mg/ml in Tris saline, 0.02% sodium azide, pH7.3 with 0.5% bovine serum albumin.

Aliquot and store at -20°C. Minimize freezing and thawing.

Applications Tested

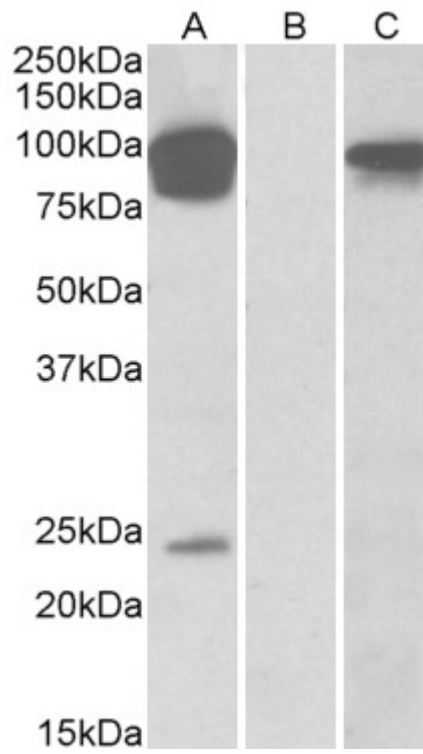
Peptide ELISA: antibody detection limit dilution 1:32000.

Western blot: In transfected HEK293 transiently expressing full-length Human TRPV3 (myc and DYKDDDDK tagged), a band of approx. 90kDa was observed. No bands were observed in mock-transfected HEK293 and the same band was observed using anti-DYKDDDDK tag antibody. Recommended concentration, 0.5-1µg/ml.

Species Reactivity

Tested: Human

Expected from sequence similarity: Human, Mouse, Rat, Dog



HEK293 lysate (10ug protein in RIPA buffer) overexpressing Human TRPV3 with DYKDDDDK tag probed with EB08799 (0.5ug/ml) in Lane A and probed with anti- DYKDDDDK Tag (1/10000) in lane C. Mock-transfected HEK293 probed with EB08799 (1mg/ml) in Lane B. Primary incubations were for 1 hour. Detected by chemiluminescence.