



## UK Office

### Everest Biotech Ltd

Cherwell Innovation Centre  
77 Heyford Park  
Upper Heyford  
Oxfordshire  
OX25 5HD  
UK

Enquiries:

[info@everestbiotech.com](mailto:info@everestbiotech.com)

Sales:

[sales@everestbiotech.com](mailto:sales@everestbiotech.com)

Tech support:

[support@everestbiotech.com](mailto:support@everestbiotech.com)

Tel: +44 (0)1869 238326

Fax: +44 (0)1869 238327

## US Office

### Everest Biotech c/o Abcore

405 Maple Street, Suite A106  
Ramona,  
CA 92065  
USA

Inquiries:

[info@everestbiotech.com](mailto:info@everestbiotech.com)

Sales:

[usasales@everestbiotech.com](mailto:usasales@everestbiotech.com)

Tech support:

[support@everestbiotech.com](mailto:support@everestbiotech.com)

Tel: 888-320-4628 (toll-free)

Fax: 888-841-9041

[www.everestbiotech.com](http://www.everestbiotech.com)

**Research Use Only. Not for  
diagnostic or therapeutic use.**

## EB08515 - Goat Anti-TRPV5 Antibody

Size: 100µg specific antibody in 200µl



### Target Protein

**Principal Names:** TRPV5, transient receptor potential cation channel, subfamily V, member 5, CAT2, ECAC1, OTRPC3, calcium transporter 2, epithelial calcium channel 1, osm-9-like TRP channel 3

**Official Symbol:** TRPV5

**Accession Number(s):** NP\_062815.2

**Human GeneID(s):** [56302](#)

**Non-Human GeneID(s):** 194352 (mouse), 116469 (rat)

### Immunogen

Peptide with sequence C-SHRGWEILRQNT, from the internal region of the protein sequence according to NP\_062815.2.

Please note the [peptide](#) is available for sale.

### Purification and Storage

Purified from goat serum by ammonium sulphate precipitation followed by antigen affinity chromatography using the immunizing peptide.

Supplied at 0.5 mg/ml in Tris saline, 0.02% sodium azide, pH7.3 with 0.5% bovine serum albumin.

Aliquot and store at -20°C. Minimize freezing and thawing.

### Applications Tested

**Peptide ELISA:** antibody detection limit dilution 1:16000.

**Western blot:** Approx 85kDa band observed in Human Pancreas lysates (calculated MW of 82.6kDa according to NP\_062815.2). Recommended concentration: 1-3µg/ml. Primary incubation was 1 hour. This antibody has been successfully used in WB on Human: Kennedy BG et al. (2010) PMID: 20405023.

**Immunocytochemistry/Immunofluorescence:** This antibody has been successfully used in ICC/IF on Human: Kennedy BG et al. (2010) PMID: 20405023. This antibody has been successfully used in ICC on Mouse: Mariana Labarca et al. (2015) PMID: 25810438. This antibody has been successfully used in ICC on Human: Tomilin VN et al. (2016) PMID: 26096460.

### Species Reactivity

**Tested:** Human

**Expected from sequence similarity:** Human, Mouse, Rat, Dog, Pig, Cow

### Specific References

**This antibody has been successfully used in IF in Human:**

Tomilin VN, Cherezova AL, Negulyaev YA, Semenova SB.

TRPV5/V6 Channels Mediate Ca(2+) Influx in Jurkat T Cells Under the Control of Extracellular pH. J Cell Biochem. 2016 Jan;117(1):197-206

PMID: 26096460

**This antibody has been successfully used in ICC on Mouse:**

Mariana Labarca, Jonathan M. Nizar, Elisabeth M. Walczak, Wuxing Dong, Alan C. Pao and Vivek Bhalla

Harvest and primary culture of the murine aldosterone-sensitive distal nephron Am J Physiol Renal Physiol. 2015 Jun 1; 308(11)

PMID: 25810438

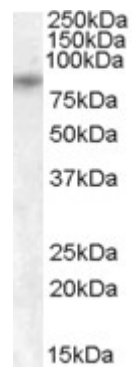
**This antibody has been successfully used in WB and ICC in Human:**

Kennedy BG, Torabi AJ, Kurzawa R, Echtenkamp SF, Mangini NJ.

Expression of transient receptor potential vanilloid channels TRPV5 and TRPV6 in retinal pigment epithelium.

Mol Vis. 2010 Apr 14;16:665-75.

PMID: 20405023



EB08515 (1µg/ml) staining of Human Pancreas lysate (35µg protein in RIPA buffer). Detected by chemiluminescence.