



UK Office

Everest Biotech Ltd

Cherwell Innovation Centre
77 Heyford Park
Upper Heyford
Oxfordshire
OX25 5HD
UK

Enquiries:

info@everestbiotech.com

Sales:

sales@everestbiotech.com

Tech support:

support@everestbiotech.com

Tel: +44 (0)1869 238326

www.everestbiotech.com

**Research Use Only. Not for
diagnostic or therapeutic use.**

EB08575 - Goat Anti-TSGA2 Antibody

Size: 100µg specific antibody in 200µl



Target Protein

Principal Names: TSGA2, RSPH1, radial spoke head 1 homolog (Chlamydomonas), MGC126568, MGC141927, RSP44, RSPH10A, TSA2, h-meichroacidin, male meiotic metaphase chromosome-associated acidic protein, meichroacidin, testes specific A2 homolog, testes specific gene A2 (mouse) homolog, testis specific A2 homolog, testis-specific gene A2

Official Symbol: RSPH1

Accession Number(s): NP_543136.1

Human GeneID(s): [89765](#)

Immunogen

Peptide with sequence C-HLNHRYQGKFLNKNP, from the internal region of the protein sequence according to NP_543136.1.

Please note the [peptide](#) is available for sale.

Purification and Storage

Purified from goat serum by ammonium sulphate precipitation followed by antigen affinity chromatography using the immunizing peptide.

Supplied at 0.5 mg/ml in Tris saline, 0.02% sodium azide, pH7.3 with 0.5% bovine serum albumin.

Aliquot and store at -20°C. Minimize freezing and thawing.

Applications Tested

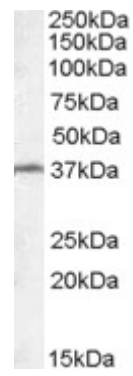
Peptide ELISA: antibody detection limit dilution 1:4000.

Western blot: Approx 37kDa band observed in Mouse Testis lysates (calculated MW of 35.1kDa according to Human NP_543136.1 and 34.2kDa according to Mouse NP_079566.1). Recommended concentration: 0.1-0.3µg/ml.

Species Reactivity

Tested: Mouse

Expected from sequence similarity: Human, Mouse, Rat, Cow



EB08575 (0.1µg/ml) staining of Mouse Testis lysate (35µg protein in RIPA buffer). Primary incubation was 1 hour. Detected by chemiluminescence.