

UK Office

Everest Biotech Ltd

Cherwell Innovation Centre
77 Heyford Park
Upper Heyford
Oxfordshire
OX25 5HD
UK

Enquiries:

info@everestbiotech.com

Sales:

sales@everestbiotech.com

Tech support:

support@everestbiotech.com

Tel: +44 (0)1869 238326

www.everestbiotech.com

**Research Use Only. Not for
diagnostic or therapeutic use.**

EB11115 - Goat Anti-TSHR (aa101-115) Antibody

Size: 100µg specific antibody in 200µl



Target Protein

Principal Names: CHNG1, hTSHR-I, LGR3, MGC75129, seven transmembrane helix receptor, thyroid stimulating hormone receptor, thyroid-stimulating hormone receptor, thyrotropin receptor, thyrotropin receptor-I, hTSHR-I, TSH-R, TSHR

Official Symbol: TSHR

Accession Number(s): NP_000360.2; NP_001018046.1

Human GeneID(s): [7253](#)

Important Comments: This antibody is expected to recognize reported isoform 1 (NP_000360.2) and isoform 2 (NP_001018046.1). The immunizing peptide sequence corresponds to a part of the extracellular domain.

Immunogen

Peptide with sequence C-SKVTHIEIRNTRNLT, from the internal region of the protein sequence according to NP_000360.2; NP_001018046.1.

Please note the [peptide](#) is available for sale.

Purification and Storage

Purified from goat serum by ammonium sulphate precipitation followed by antigen affinity chromatography using the immunizing peptide.

Supplied at 0.5 mg/ml in Tris saline, 0.02% sodium azide, pH7.3 with 0.5% bovine serum albumin.

Aliquot and store at -20°C. Minimize freezing and thawing.

Applications Tested

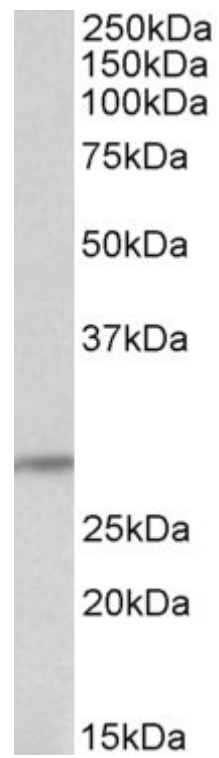
Peptide ELISA: antibody detection limit dilution 1:16000.

Western blot: Approx 28kDa band observed in Human Thyroid Gland lysates (calculated MW of 28.4kDa according to NP_001018046.1). Recommended concentration: 0.1-0.3µg/ml. Primary incubation was 1 hour.

Species Reactivity

Tested: Human

Expected from sequence similarity: Human, Cow



EB11115 (0.1µg/ml) staining of Human Thyroid Gland lysate (35µg protein in RIPA buffer). Detected by chemiluminescence.