

## UK Office

### Everest Biotech Ltd

Cherwell Innovation Centre  
77 Heyford Park  
Upper Heyford  
Oxfordshire  
OX25 5HD  
UK

Enquiries:

[info@everestbiotech.com](mailto:info@everestbiotech.com)

Sales:

[sales@everestbiotech.com](mailto:sales@everestbiotech.com)

Tech support:

[support@everestbiotech.com](mailto:support@everestbiotech.com)

Tel: +44 (0)1869 238326

[www.everestbiotech.com](http://www.everestbiotech.com)

**Research Use Only. Not for  
diagnostic or therapeutic use.**

## EB11778 - Goat Anti-TSPAN5 / NET-4 Antibody

Size: 100µg specific antibody in 200µl



### Target Protein

**Principal Names:** NET4, NET-4, tetraspan 5, tetraspan NET-4, tetraspan TM4SF, tetraspanin 5, tetraspanin-5, TM4SF9, transmembrane 4 superfamily member 9, transmembrane 4 superfamily, member 8, TSPAN5, TSPAN-5

**Official Symbol:** TSPAN5

**Accession Number(s):** NP\_005714.2

**Human GeneID(s):** [10098](#)

**Non-Human GeneID(s):** 56224 (mouse), 362048 (rat)

### Immunogen

Peptide with sequence SGKHYKGPEVSC, from the N Terminus of the protein sequence according to NP\_005714.2.

Please note the [peptide](#) is available for sale.

### Purification and Storage

Purified from goat serum by ammonium sulphate precipitation followed by antigen affinity chromatography using the immunizing peptide.

Supplied at 0.5 mg/ml in Tris saline, 0.02% sodium azide, pH7.3 with 0.5% bovine serum albumin.

Aliquot and store at -20°C. Minimize freezing and thawing.

### Applications Tested

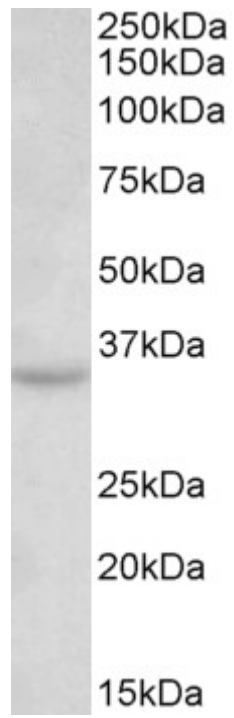
**Peptide ELISA:** antibody detection limit dilution 1:128000.

**Western blot:** Approx 35kDa band observed in Human, Mouse and Rat Brain lysates (calculated MW of 30.3kDa according to NP\_005714.2). This molecular weight is routinely observed by other sources. Recommended concentration: 0.3-1µg/ml.

### Species Reactivity

**Tested:** Human, Mouse, Rat

**Expected from sequence similarity:** Human, Mouse, Rat Dog, Pig, Cow



EB11778 (0.3 $\mu$ g/ml) staining of Mouse Brain lysate (35 $\mu$ g protein in RIPA buffer). Primary incubation was 1 hour.  
Detected by chemiluminescence.