



UK Office

Everest Biotech Ltd

Cherwell Innovation Centre
77 Heyford Park
Upper Heyford
Oxfordshire
OX25 5HD
UK

Enquiries:

info@everestbiotech.com

Sales:

sales@everestbiotech.com

Tech support:

support@everestbiotech.com

Tel: +44 (0)1869 238326

Fax: +44 (0)1869 238327

US Office

Everest Biotech c/o Abcore

405 Maple Street, Suite A106
Ramona,
CA 92065
USA

Inquiries:

info@everestbiotech.com

Sales:

usasales@everestbiotech.com

Tech support:

support@everestbiotech.com

Tel: 888-320-4628 (toll-free)

Fax: 888-841-9041

www.everestbiotech.com

**Research Use Only. Not for
diagnostic or therapeutic use.**

EB11778 - Goat Anti-TSPAN5 / NET-4 Antibody

Size: 100µg specific antibody in 200µl



Target Protein

Principal Names: NET4, NET-4, tetraspan 5, tetraspan NET-4, tetraspan TM4SF, tetraspanin 5, tetraspanin-5, TM4SF9, transmembrane 4 superfamily member 9, transmembrane 4 superfamily, member 8, TSPAN5, TSPAN-5

Official Symbol: TSPAN5

Accession Number(s): NP_005714.2

Human GeneID(s): [10098](#)

Non-Human GeneID(s): 56224 (mouse), 362048 (rat)

Immunogen

Peptide with sequence SGKHYKGPEVSC, from the N Terminus of the protein sequence according to NP_005714.2.

Please note the [peptide](#) is available for sale.

Purification and Storage

Purified from goat serum by ammonium sulphate precipitation followed by antigen affinity chromatography using the immunizing peptide.

Supplied at 0.5 mg/ml in Tris saline, 0.02% sodium azide, pH7.3 with 0.5% bovine serum albumin.

Aliquot and store at -20°C. Minimize freezing and thawing.

Applications Tested

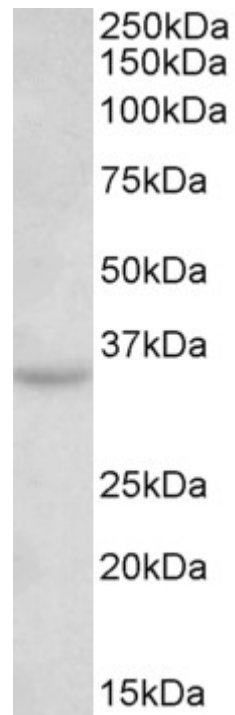
Peptide ELISA: antibody detection limit dilution 1:128000.

Western blot: Approx 35kDa band observed in Human, Mouse and Rat Brain lysates (calculated MW of 30.3kDa according to NP_005714.2). This molecular weight is routinely observed by other sources. Recommended concentration: 0.3-1µg/ml.

Species Reactivity

Tested: Human, Mouse, Rat

Expected from sequence similarity: Human, Mouse, Rat Dog, Pig, Cow



EB11778 (0.3 μ g/ml) staining of Mouse Brain lysate (35 μ g protein in RIPA buffer). Primary incubation was 1 hour.
Detected by chemiluminescence.