



UK Office

Everest Biotech Ltd

Cherwell Innovation Centre
77 Heyford Park
Upper Heyford
Oxfordshire
OX25 5HD
UK

Enquiries:

info@everestbiotech.com

Sales:

sales@everestbiotech.com

Tech support:

support@everestbiotech.com

Tel: +44 (0)1869 238326

Fax: +44 (0)1869 238327

US Office

Everest Biotech c/o Abcore

405 Maple Street, Suite A106
Ramona,
CA 92065
USA

Inquiries:

info@everestbiotech.com

Sales:

usasales@everestbiotech.com

Tech support:

support@everestbiotech.com

Tel: 888-320-4628 (toll-free)

Fax: 888-841-9041

www.everestbiotech.com

**Research Use Only. Not for
diagnostic or therapeutic use.**

EB09831 - Goat Anti-TTLL4 Antibody

Size: 100µg specific antibody in 200µl



Target Protein

Principal Names: KIAA0173, OTTHUMP00000164099, tubulin tyrosine ligase-like family, member 4, TTLL4

Official Symbol: TTLL4

Accession Number(s): NP_055455.3

Human GeneID(s): [9654](#)

Non-Human GeneID(s): 67534 (mouse), 690512 (rat)

Immunogen

Peptide with sequence C-RSSYRQKPYQQLE, from the internal region of the protein sequence according to NP_055455.3.

Please note the [peptide](#) is available for sale.

Purification and Storage

Purified from goat serum by ammonium sulphate precipitation followed by antigen affinity chromatography using the immunizing peptide.

Supplied at 0.5 mg/ml in Tris saline, 0.02% sodium azide, pH7.3 with 0.5% bovine serum albumin.

Aliquot and store at -20°C. Minimize freezing and thawing.

Applications Tested

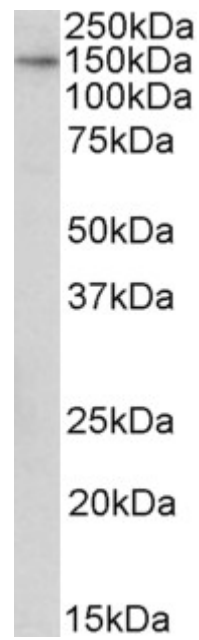
Peptide ELISA: antibody detection limit dilution 1:16000.

Western blot: Approx 150kDa band observed in lysates of cell line MDCK (calculated MW of 133kDa according to NP_055455.3). Recommended concentration: 1-3µg/ml.

Species Reactivity

Tested: Dog

Expected from sequence similarity: Human, Mouse, Rat, Dog, Cow



EB09831 (1µg/ml) staining of MDCK lysate (35µg protein in RIPA buffer). Primary incubation was 1 hour.
Detected by chemiluminescence