



UK Office

Everest Biotech Ltd

Cherwell Innovation Centre
77 Heyford Park
Upper Heyford
Oxfordshire
OX25 5HD
UK

Enquiries:

info@everestbiotech.com

Sales:

sales@everestbiotech.com

Tech support:

support@everestbiotech.com

Tel: +44 (0)1869 238326

Fax: +44 (0)1869 238327

US Office

Everest Biotech c/o Abcore

405 Maple Street, Suite A106
Ramona,
CA 92065
USA

Inquiries:

info@everestbiotech.com

Sales:

usasales@everestbiotech.com

Tech support:

support@everestbiotech.com

Tel: 888-320-4628 (toll-free)

Fax: 888-841-9041

www.everestbiotech.com

**Research Use Only. Not for
diagnostic or therapeutic use.**

EB11685 - Goat Anti-TUBB3 Antibody

Size: 100µg specific antibody in 200µl



Target Protein

Principal Names: beta-4, CDCBM, CFEOM3A, class III beta-tubulin, OTTHUMP00000176846, TUBB3, TUBB4, tubulin beta-3 chain, tubulin beta-4 chain, tubulin beta-III, tubulin, beta 3

Official Symbol: TUBB3

Accession Number(s): NP_006077.2

Human GeneID(s): [10381](#)

Non-Human GeneID(s): 22152 (mouse), 246118 (rat)

Important Comments: This antibody is expected to recognize isoform 1 (NP_006077.2) only.

Immunogen

Peptide with sequence C-DPSGNYVGDS, from the internal region (near N terminus) of the protein sequence according to NP_006077.2.

Please note the [peptide](#) is available for sale.

Purification and Storage

Purified from goat serum by ammonium sulphate precipitation followed by antigen affinity chromatography using the immunizing peptide.

Supplied at 0.5 mg/ml in Tris saline, 0.02% sodium azide, pH7.3 with 0.5% bovine serum albumin.

Aliquot and store at -20°C. Minimize freezing and thawing.

Applications Tested

Peptide ELISA: antibody detection limit dilution 1:1000.

Western blot: Approx 52kDa band observed in lysates of cell line HepG2 (calculated MW of 50.4kDa according to NP_006077.2). Recommended concentration: 1-3µg/ml.

Species Reactivity

Tested: Human

Expected from sequence similarity: Human, Mouse, Rat, Pig, Cow

Specific Reference

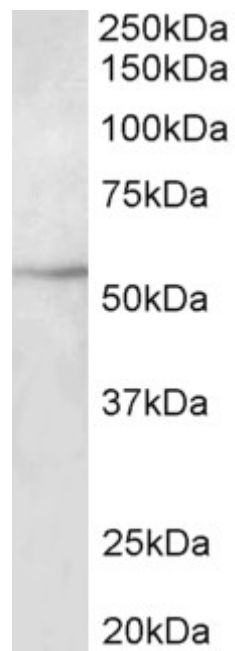
This antibody has been successfully used in the following paper:

Bismark Appiah et al.

DOT1L activity affects neural stem cell division mode and reduces differentiation and ASNS expression.

EMBO Rep. 2023 Aug; 24(8): e56233.

PMID: 37382163



EB11685 (2 μ g/ml) staining of HepG2 lysate (35 μ g protein in RIPA buffer). Primary incubation was 1 hour.
Detected by chemiluminescence.