



UK Office

Everest Biotech Ltd

Cherwell Innovation Centre
77 Heyford Park
Upper Heyford
Oxfordshire
OX25 5HD
UK

Enquiries:

info@everestbiotech.com

Sales:

sales@everestbiotech.com

Tech support:

support@everestbiotech.com

Tel: +44 (0)1869 238326

Fax: +44 (0)1869 238327

US Office

Everest Biotech c/o Abcore

405 Maple Street, Suite A106
Ramona,
CA 92065
USA

Inquiries:

info@everestbiotech.com

Sales:

usasales@everestbiotech.com

Tech support:

support@everestbiotech.com

Tel: 888-320-4628 (toll-free)

Fax: 888-841-9041

www.everestbiotech.com

**Research Use Only. Not for
diagnostic or therapeutic use.**

EB08380 - Goat Anti-TUSC3 / N33 Antibody

Size: 100µg specific antibody in 200µl



Target Protein

Principal Names: TUSC3, tumor suppressor candidate 3, D8S1992, MGC13453, N33, OST3A, Putative prostate cancer tumor suppressor

Official Symbol: TUSC3

Accession Number(s): NP_006756.2; NP_839952.1

Human GeneID(s): [7991](#)

Non-Human GeneID(s): 80286 (mouse), 290783 (rat)

Important Comments: This antibody is expected to recognise both reported isoforms (NP_006756.2; NP_839952.1).

Immunogen

Peptide with sequence PQRQCSVCRQAN, from the internal region of the protein sequence according to NP_006756.2; NP_839952.1.

Please note the [peptide](#) is available for sale.

Purification and Storage

Purified from goat serum by ammonium sulphate precipitation followed by antigen affinity chromatography using the immunizing peptide.

Supplied at 0.5 mg/ml in Tris saline, 0.02% sodium azide, pH7.3 with 0.5% bovine serum albumin.

Aliquot and store at -20°C. Minimize freezing and thawing.

Applications Tested

Peptide ELISA: antibody detection limit dilution 1:1000.

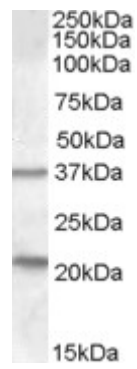
Western blot: Approx 37kDa band observed in Human Liver and Lung lysates (calculated MW of 39.7kDa according to NP_006756.2 and of 39.6 according to NP_839952.1). An additional band of unknown identity was also consistently observed at 22kDa, which was successfully blocked by incubation with the immunising peptide. Recommended concentration: 1-3µg/ml. Primary incubation 1 hour at room temperature.

IHC: Paraffin embedded Human Prostate. Recommended concentration: 4-8µg/ml.

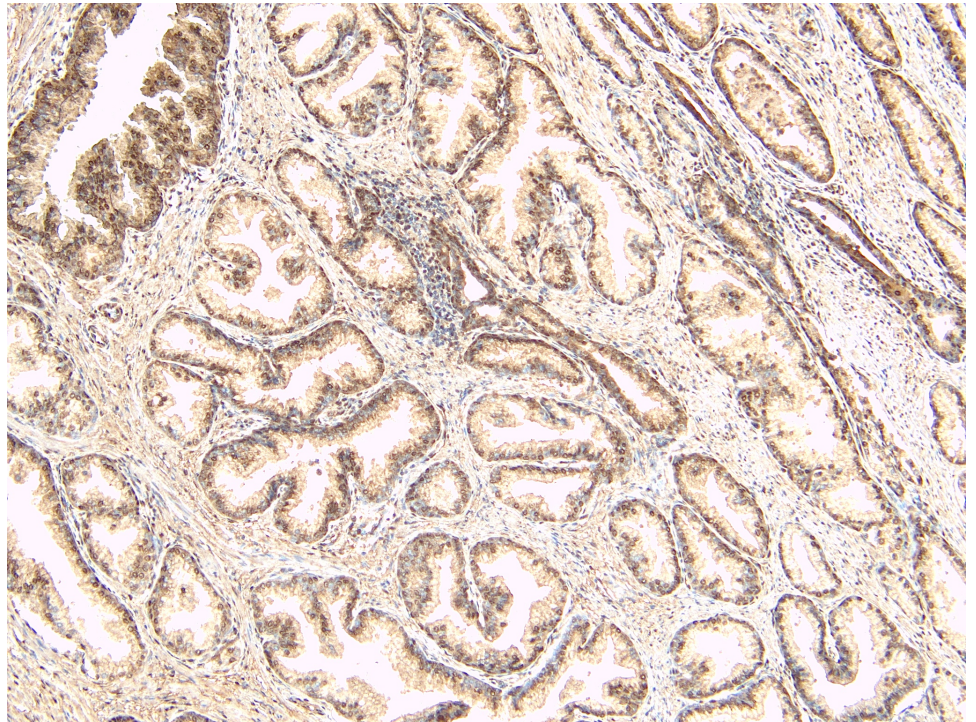
Species Reactivity

Tested: Human

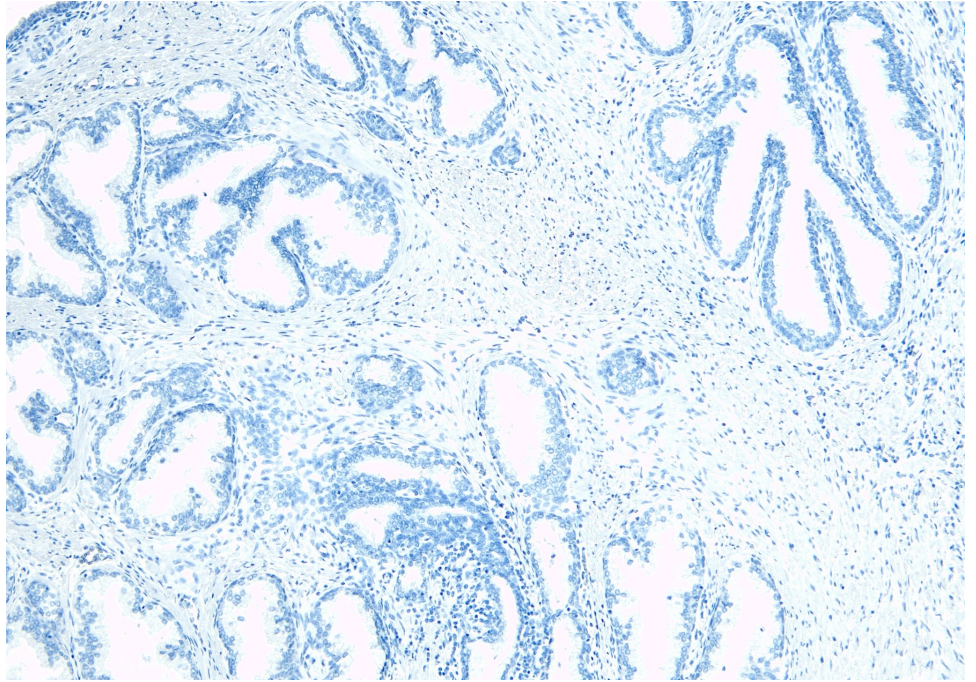
Expected from sequence similarity: Human, Mouse, Rat, Cow



EB08380 (1 μ g/ml) staining of Human Liver lysate (35 μ g protein in RIPA buffer). Detected by chemiluminescence.



EB08380 (8 μ g/ml) staining of paraffin embedded Human Prostate. Heat induced antigen retrieval with citrate buffer pH 6, HRP-staining.



EB08380 Negative Control showing staining of paraffin embedded Human Prostate, with no primary antibody.