



UK Office

Everest Biotech Ltd

Cherwell Innovation Centre
77 Heyford Park
Upper Heyford
Oxfordshire
OX25 5HD
UK

Enquiries:

info@everestbiotech.com

Sales:

sales@everestbiotech.com

Tech support:

support@everestbiotech.com

Tel: +44 (0)1869 238326

Fax: +44 (0)1869 238327

US Office

Everest Biotech c/o Abcore

405 Maple Street, Suite A106
Ramona,
CA 92065
USA

Inquiries:

info@everestbiotech.com

Sales:

usasales@everestbiotech.com

Tech support:

support@everestbiotech.com

Tel: 888-320-4628 (toll-free)

Fax: 888-841-9041

www.everestbiotech.com

**Research Use Only. Not for
diagnostic or therapeutic use.**

EB08520 - Goat Anti-TXL2 / TXNDC6 Antibody

Size: 100µg specific antibody in 200µl



Target Protein

Principal Names: TXNDC6, TXL2, thioredoxin domain containing 6, MGC129586, TXL-2, thioredoxin-like 2

Official Symbol: TXNDC6

Accession Number(s): NP_835231.1

Human GeneID(s): [347736](#)

Immunogen

Peptide with sequence C-ESSTQPRLKITDLD, from the C Terminus of the protein sequence according to NP_835231.1.

Please note the [peptide](#) is available for sale.

Purification and Storage

Purified from goat serum by ammonium sulphate precipitation followed by antigen affinity chromatography using the immunizing peptide.

Supplied at 0.5 mg/ml in Tris saline, 0.02% sodium azide, pH7.3 with 0.5% bovine serum albumin.

Aliquot and store at -20°C. Minimize freezing and thawing.

Applications Tested

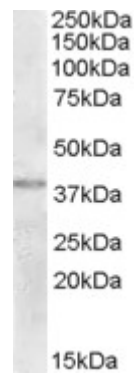
Peptide ELISA: antibody detection limit dilution 1:8000.

Western blot: Approx 38kDa band observed in Human Uterus lysates (calculated MW of 29.7kDa according to NP_835231.1). The observed molecular weight corresponds to earlier findings in literature with different antibodies (Sadek et al, J Biol Chem. 2003 Apr 11;278(15):13133-42; 12569107). Recommended concentration: 1-3µg/ml.

Species Reactivity

Tested: Human

Expected from sequence similarity: Human



EB08520 (2 μ g/ml) staining of Human Uterus lysate (35 μ g protein in RIPA buffer). Primary incubation was 1 hour.
Detected by chemiluminescence.