



## UK Office

### Everest Biotech Ltd

Cherwell Innovation Centre  
77 Heyford Park  
Upper Heyford  
Oxfordshire  
OX25 5HD  
UK

Enquiries:

[info@everestbiotech.com](mailto:info@everestbiotech.com)

Sales:

[sales@everestbiotech.com](mailto:sales@everestbiotech.com)

Tech support:

[support@everestbiotech.com](mailto:support@everestbiotech.com)

Tel: +44 (0)1869 238326

Fax: +44 (0)1869 238327

## US Office

### Everest Biotech c/o Abcore

405 Maple Street, Suite A106  
Ramona,  
CA 92065  
USA

Inquiries:

[info@everestbiotech.com](mailto:info@everestbiotech.com)

Sales:

[usasales@everestbiotech.com](mailto:usasales@everestbiotech.com)

Tech support:

[support@everestbiotech.com](mailto:support@everestbiotech.com)

Tel: 888-320-4628 (toll-free)

Fax: 888-841-9041

[www.everestbiotech.com](http://www.everestbiotech.com)

**Research Use Only. Not for  
diagnostic or therapeutic use.**

## EB05086-B - Goat Anti-TXNDC1 / TMX, biotinylated Antibody

Size: 100µg specific antibody in 200µl



### Target Protein

**Principal Names:** TMX1, thioredoxin-related transmembrane protein 1, PDIA11, TMX, TXNDC, TXNDC1, protein disulfide isomerase family A, member 11, thioredoxin domain containing 1, thioredoxin domain-containing protein 1, transmembrane Trx-related protein

**Official Symbol:** TMX1

**Accession Number(s):** NP\_110382.3

**Human GeneID(s):** [81542](#)

### Immunogen

Peptide with sequence C-RSLGPSLATDKS., from the C Terminus of the protein sequence according to NP\_110382.3.

Please note the [peptide](#) is available for sale.

### Purification and Storage

Purified from goat serum by ammonium sulphate precipitation followed by antigen affinity chromatography using the immunizing peptide.

Supplied at 0.5 mg/ml in Tris saline, 0.02% sodium azide, pH7.3 with 0.5% bovine serum albumin.

Aliquot and store at -20°C. Minimize freezing and thawing.

### Applications Tested

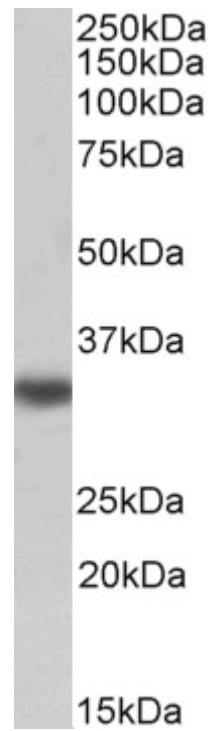
**Peptide ELISA:** antibody detection limit dilution 1:64000.

**Western blot:** Approx 35kDa band observed in Human Liver lysates (calculated MW of 31.8kDa according to NP\_110382.3). See non-biotinylated parental product's datasheet for further QC data. Recommended concentration: 0.01-0.03µg/ml.

### Species Reactivity

**Tested:** Human

**Expected from sequence similarity:** Human



Biotinylated EB05086 (0.01 $\mu$ g/ml) staining of Human Liver lysate (35 $\mu$ g protein in RIPA buffer), exactly mirroring its parental non-biotinylated product. Primary incubation was 1 hour. Detected by chemiluminescence, using streptavidin-HRP and using NAP blocker as a substitute for skimmed milk.