

## UK Office

### Everest Biotech Ltd

Cherwell Innovation Centre  
77 Heyford Park  
Upper Heyford  
Oxfordshire  
OX25 5HD  
UK

Enquiries:

[info@everestbiotech.com](mailto:info@everestbiotech.com)

Sales:

[sales@everestbiotech.com](mailto:sales@everestbiotech.com)

Tech support:

[support@everestbiotech.com](mailto:support@everestbiotech.com)

Tel: +44 (0)1869 238326

[www.everestbiotech.com](http://www.everestbiotech.com)

**Research Use Only. Not for  
diagnostic or therapeutic use.**

## EB10879 - Goat Anti-TXNDC5 (aa281-295)

### Antibody

Size: 100µg specific antibody in 200µl



### Target Protein

**Principal Names:** TXNDC5, thioredoxin domain containing 5 (endoplasmic reticulum), ERP46, EndoPDI, Hcc-2, MGC3178, PDIA15, UNQ364, ER protein 46, endoplasmic reticulum protein ERp46, endoplasmic reticulum resident protein 46, endothelial protein disulphide isomerase, protein disulfide isomerase family A, member 15, thioredoxin domain-containing protein 5, thioredoxin related protein, thioredoxin-like protein p46

**Official Symbol:** TXNDC5

**Accession Number(s):** NP\_110437.2; NP\_001139021.1

**Human GeneID(s):** [81567](#)

**Non-Human GeneID(s):** 105245 (mouse)

**Important Comments:** This antibody is expected to recognize both reported isoforms (NP\_110437.2; NP\_001139021.1).

### Immunogen

Peptide with sequence C-RDLESRLREYVESQLQ, from the internal region of the protein sequence according to NP\_110437.2; NP\_001139021.1.

Please note the [peptide](#) is available for sale.

### Purification and Storage

Purified from goat serum by ammonium sulphate precipitation followed by antigen affinity chromatography using the immunizing peptide.

Supplied at 0.5 mg/ml in Tris saline, 0.02% sodium azide, pH7.3 with 0.5% bovine serum albumin.

Aliquot and store at -20°C. Minimize freezing and thawing.

### Applications Tested

**Peptide ELISA:** antibody detection limit dilution 1:16000.

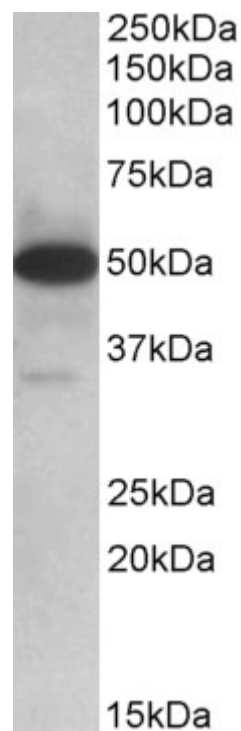
**Western blot:** Approx 50kDa plus faint 35kDa bands observed in Human Lymph Nodes lysates and 48kDa in Mouse Lymph Node and in Mouse Intestine lysates (calculated MW of 47.6kDa according to Human NP\_110437.2, 46.4kDa to Mouse NP\_663342.3) and of 36.2kDa according to Human NP\_001139021.1. Recommended concentration: 0.1-0.3µg/ml. Primary incubation was 1 hour.

**IHC:** Paraffin embedded Human Small Intestine. Recommended concentration: 3.75µg/ml.

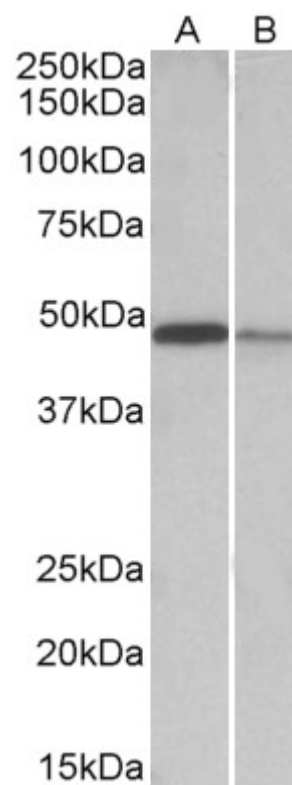
### Species Reactivity

**Tested:** Human, Mouse

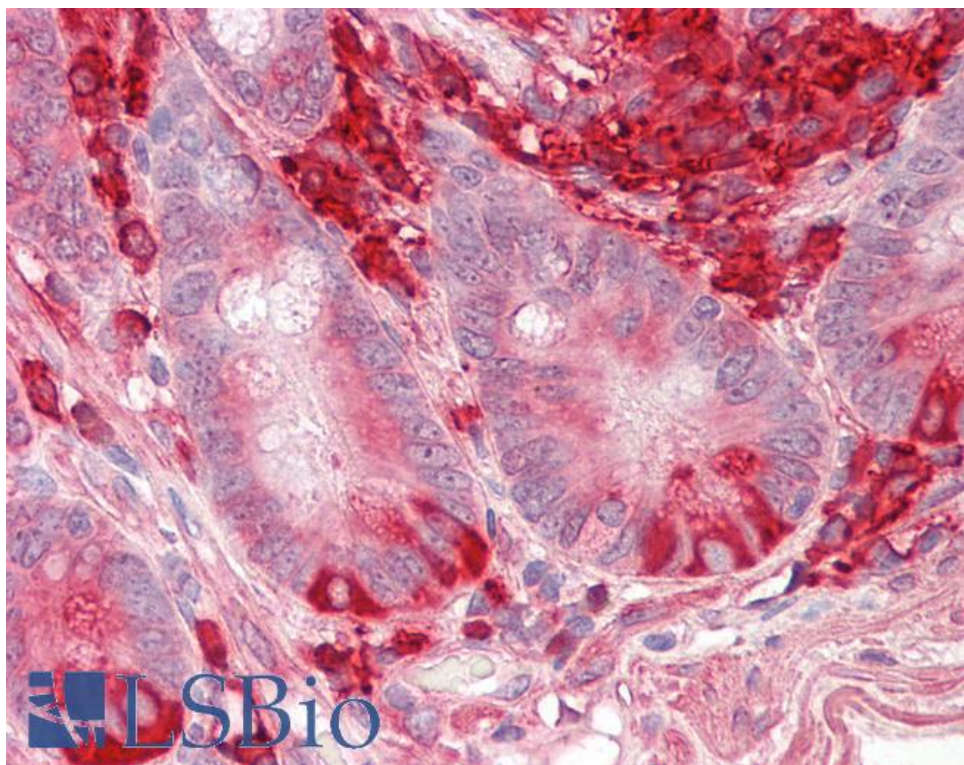
**Expected from sequence similarity:** Human, Mouse, Cow



EB10879 (0.1 $\mu$ g/ml) staining of Human Lymph Nodes lysate (35 $\mu$ g protein in RIPA buffer). Detected by chemiluminescence.



EB10679 (0.1 $\mu$ g/ml) staining of Mouse Lymph Nodes (A) and Mouse Intestine (B) lysates (35 $\mu$ g protein in RIPA buffer). Detected by chemiluminescence.



EB10879 (3.75µg/ml) staining of paraffin embedded Human Small Intestine. Steamed antigen retrieval with citrate buffer Ph 6, AP-staining.