



## UK Office

### Everest Biotech Ltd

Cherwell Innovation Centre  
77 Heyford Park  
Upper Heyford  
Oxfordshire  
OX25 5HD  
UK

Enquiries:

[info@everestbiotech.com](mailto:info@everestbiotech.com)

Sales:

[sales@everestbiotech.com](mailto:sales@everestbiotech.com)

Tech support:

[support@everestbiotech.com](mailto:support@everestbiotech.com)

Tel: +44 (0)1869 238326

Fax: +44 (0)1869 238327

## US Office

### Everest Biotech c/o Abcore

405 Maple Street, Suite A106  
Ramona,  
CA 92065  
USA

Inquiries:

[info@everestbiotech.com](mailto:info@everestbiotech.com)

Sales:

[usasales@everestbiotech.com](mailto:usasales@everestbiotech.com)

Tech support:

[support@everestbiotech.com](mailto:support@everestbiotech.com)

Tel: 888-320-4628 (toll-free)

Fax: 888-841-9041

[www.everestbiotech.com](http://www.everestbiotech.com)

**Research Use Only. Not for  
diagnostic or therapeutic use.**

## EB05759 - Goat Anti-UBE2I Antibody

Size: 100µg specific antibody in 200µl



## Target Protein

**Principal Names:** UBE2I, ubiquitin-conjugating enzyme E2I (UBC9 homolog, yeast), C358B7.1, P18, UBC9, SUMO-1-protein ligase, ubiquitin carrier protein I, ubiquitin conjugating enzyme 9, ubiquitin-conjugating enzyme E2I, ubiquitin-conjugating enzyme E2I (homologous to yeast UBC9), ubiquitin-conjugating enzyme UbcE2A, ubiquitin-like protein SUMO-1 conjugating enzyme, ubiquitin-protein ligase E2I, SUMO-protein ligase, ubiquitin carrier protein 9, ubiquitin-conjugating enzyme E2I (UBC9 homolog, yeast), ubiquitin-protein ligase I

**Official Symbol:** UBE2I

**Accession Number(s):** NP\_003336.1

**Human GeneID(s):** [7329](#)

**Non-Human GeneID(s):** 22196 (mouse), 25573 (rat)

**Important Comments:** Reported variants represent identical protein: NP\_919237.1, NP\_003336.1, NP\_919236.1, NP\_919235.1

## Immunogen

Peptide with sequence SGIALSRLAQERK-C, from the N Terminus of the protein sequence according to NP\_003336.1.

Please note the [peptide](#) is available for sale.

## Purification and Storage

Purified from goat serum by ammonium sulphate precipitation followed by antigen affinity chromatography using the immunizing peptide.

Supplied at 0.5 mg/ml in Tris saline, 0.02% sodium azide, pH7.3 with 0.5% bovine serum albumin.

Aliquot and store at -20°C. Minimize freezing and thawing.

## Applications Tested

**Peptide ELISA:** antibody detection limit dilution 1:64000.

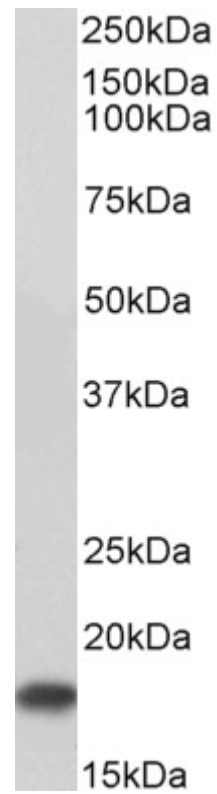
**Western blot:** Approx 17kDa band observed in Human Kidney lysates and in Rat Ovary, Heart and Testis lysates (calculated MW of 18.0kDa according to Human NP\_003336.1). Recommended concentration: 0.1-0.3µg/ml. Primary incubation was 1 hour.

**IHC:** In paraffin embedded Human Kidney, shows nuclear staining of some epithelial cells of glomeruli and renal tubules. Recommended concentration: 1µg/ml.

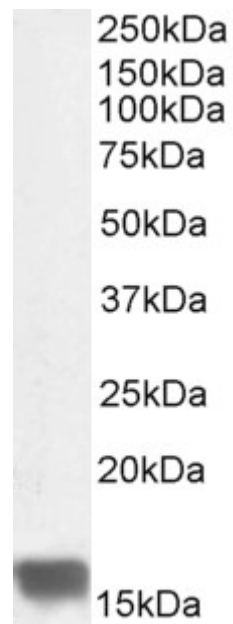
## Species Reactivity

**Tested:** Human, Rat

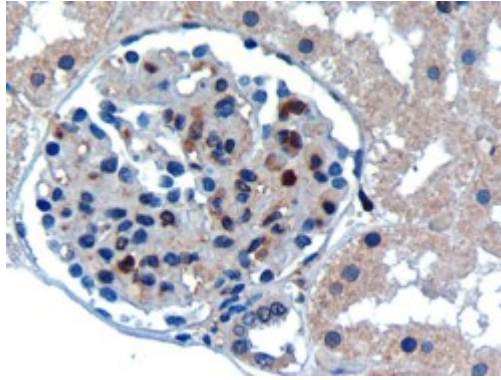
**Expected from sequence similarity:** Human, Mouse, Rat, Dog



EB05759 (0.1 $\mu$ g/ml) staining of Human Kidney lysate (35 $\mu$ g protein in RIPA buffer). Detected by chemiluminescence.



EB05759 (0.3 $\mu$ g/ml) staining of Rat Ovary lysate (35 $\mu$ g protein in RIPA buffer). Detected by chemiluminescence.



EB05759 (0.3 $\mu$ g/ml) staining of paraffin embedded Human Kidney. Microwaved antigen retrieval with Tris/EDTA buffer pH9, HRP-staining.