

## UK Office

### Everest Biotech Ltd

Cherwell Innovation Centre  
77 Heyford Park  
Upper Heyford  
Oxfordshire  
OX25 5HD  
UK

Enquiries:

[info@everestbiotech.com](mailto:info@everestbiotech.com)

Sales:

[sales@everestbiotech.com](mailto:sales@everestbiotech.com)

Tech support:

[support@everestbiotech.com](mailto:support@everestbiotech.com)

Tel: +44 (0)1869 238326

[www.everestbiotech.com](http://www.everestbiotech.com)

**Research Use Only. Not for  
diagnostic or therapeutic use.**

## EB12124 - Goat Anti-UBID4 (aa245-259) Antibody

Size: 100µg specific antibody in 200µl



### Target Protein

**Principal Names:** DPF2, D4, zinc and double PHD fingers family 2, REQ, UBID4, ubi-d4, BAF45D, BRG1-associated factor 45D, apoptosis response zinc finger protein, protein requiem, requiem, apoptosis response zinc finger, zinc finger protein ubi-d4

**Official Symbol:** DPF2

**Accession Number(s):** NP\_006259.1

**Human GeneID(s):** [5977](#)

**Non-Human GeneID(s):** 19708 (mouse), 361711 (rat)

### Immunogen

Peptide with sequence C-QPPTPVSRSEEQKS, from the internal region of the protein sequence according to NP\_006259.1.

Please note the [peptide](#) is available for sale.

### Purification and Storage

Purified from goat serum by ammonium sulphate precipitation followed by antigen affinity chromatography using the immunizing peptide.

Supplied at 0.5 mg/ml in Tris saline, 0.02% sodium azide, pH7.3 with 0.5% bovine serum albumin.

Aliquot and store at -20°C. Minimize freezing and thawing.

### Applications Tested

**Peptide ELISA:** antibody detection limit dilution 1:128000.

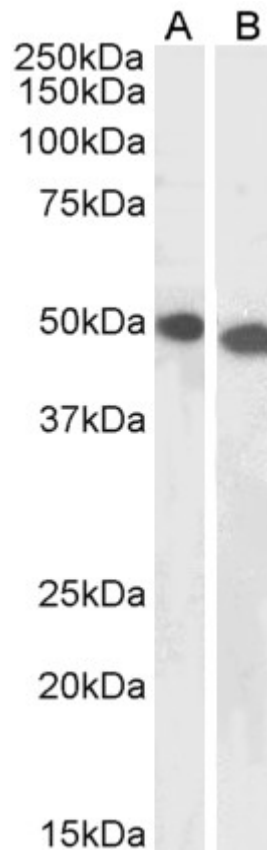
**Western blot:** Approx 50kDa and 48kDa bands observed in lysates of cell lines Jurkat and K562 respectively (calculated MW of 44.2kDa according to NP\_006259.1). This molecular weight is routinely observed by other sources. Recommended concentration: 1-3µg/ml.

**IHC:** Paraffin embedded Human Prostate. Recommended concentration: 5µg/ml.

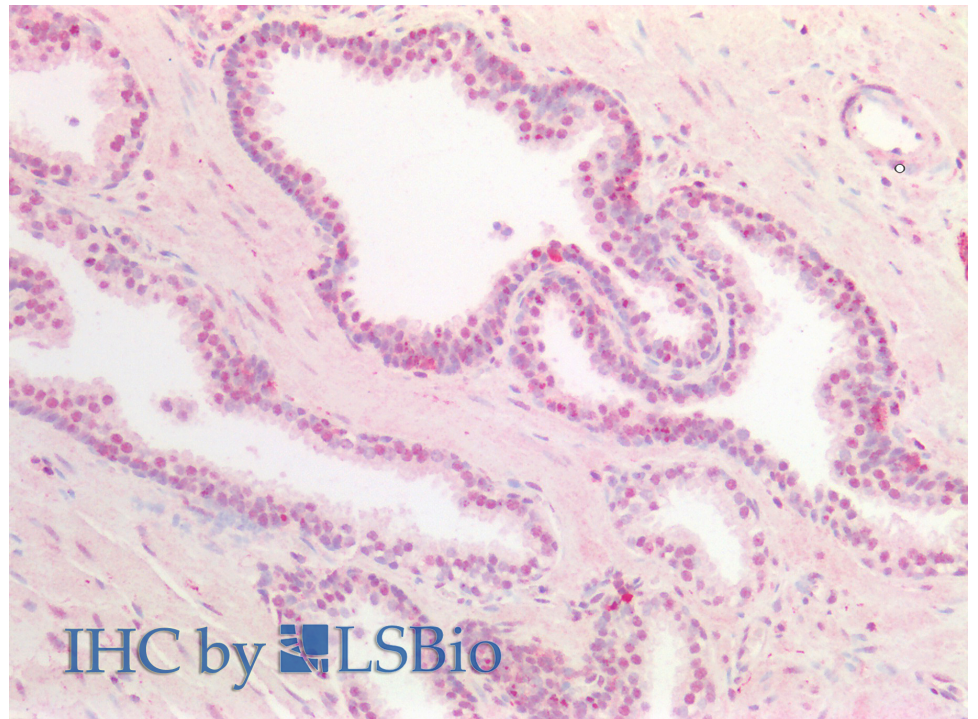
### Species Reactivity

**Tested:** Human

**Expected from sequence similarity:** Human, Mouse, Rat, Dog, Pig, Cow



EB12124 (1µg/ml) staining of Jurkat (A) and K562 (B) lysates (35µg protein in RIPA buffer). Primary incubation was 1 hour. Detected by chemiluminescence.



EB12124 (5µg/ml) staining of paraffin embedded Human Prostate. Steamed antigen retrieval with citrate buffer pH 6, AP-staining.