

## UK Office

### Everest Biotech Ltd

Cherwell Innovation Centre  
77 Heyford Park  
Upper Heyford  
Oxfordshire  
OX25 5HD  
UK

Enquiries:

[info@everestbiotech.com](mailto:info@everestbiotech.com)

Sales:

[sales@everestbiotech.com](mailto:sales@everestbiotech.com)

Tech support:

[support@everestbiotech.com](mailto:support@everestbiotech.com)

Tel: +44 (0)1869 238326

[www.everestbiotech.com](http://www.everestbiotech.com)

**Research Use Only. Not for  
diagnostic or therapeutic use.**

## EB09611 - Goat Anti-UBR4 / ZUBR1 Antibody

Size: 100µg specific antibody in 200µl



### Target Protein

**Principal Names:** UBR4, ubiquitin protein ligase E3 component n-recognin 4, FLJ41863, KIAA0462, KIAA1307, RBAF600, ZUBR1, p600, retinoblastoma-associated factor 600, retinoblastoma-associated factor 600-like protein, zinc finger, UBR1 type 1

**Official Symbol:** UBR4

**Accession Number(s):** NP\_065816.2

**Human GeneID(s):** [23352](#)

**Non-Human GeneID(s):** 69116 (mouse), 313658 (rat)

### Immunogen

Peptide with sequence C-NTTRATSREEKNLQ, from the C Terminus of the protein sequence according to NP\_065816.2.

Please note the [peptide](#) is available for sale.

### Purification and Storage

Purified from goat serum by ammonium sulphate precipitation followed by antigen affinity chromatography using the immunizing peptide.

Supplied at 0.5 mg/ml in Tris saline, 0.02% sodium azide, pH7.3 with 0.5% bovine serum albumin.

Aliquot and store at -20°C. Minimize freezing and thawing.

### Applications Tested

**Peptide ELISA:** antibody detection limit dilution 1:128000.

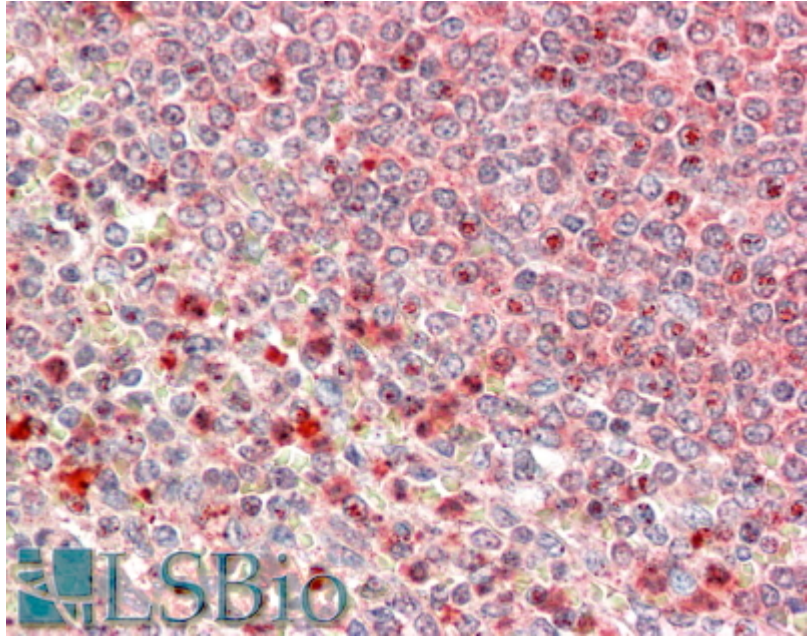
**Western blot:** Not yet tested - our routinely used western blotting protocol does not allow detection of proteins as large as the calculated size of 574kDa according to NP\_065816.2. Therefore we cannot recommend an optimal concentration and the antibody is an aspiring product. We would appreciate any feedback from people in the field - have any results been reported with other antibodies/lysates? Have any further splice variants/modified forms been reported?

**IHC:** In paraffin embedded Spleen shows various types of subnuclear staining in select splenocytes and additional membrane plus cytoplasm staining elsewhere. Recommended concentration, 5-10µg/ml.

### Species Reactivity

**Tested:** Human

**Expected from sequence similarity:** Human, Mouse, Rat, Dog, Cow



EB09611 (5µg/ml) staining of paraffin embedded Human Spleen. Steamed antigen retrieval with citrate buffer pH 6, AP-staining.