



UK Office

Everest Biotech Ltd

Cherwell Innovation Centre
77 Heyford Park
Upper Heyford
Oxfordshire
OX25 5HD
UK

Enquiries:

info@everestbiotech.com

Sales:

sales@everestbiotech.com

Tech support:

support@everestbiotech.com

Tel: +44 (0)1869 238326

Fax: +44 (0)1869 238327

US Office

Everest Biotech c/o Abcore

405 Maple Street, Suite A106
Ramona,
CA 92065
USA

Inquiries:

info@everestbiotech.com

Sales:

usasales@everestbiotech.com

Tech support:

support@everestbiotech.com

Tel: 888-320-4628 (toll-free)

Fax: 888-841-9041

www.everestbiotech.com

**Research Use Only. Not for
diagnostic or therapeutic use.**

EB07716 - Goat Anti-Uncoupling protein 2 / UCP2 Antibody

Size: 100µg specific antibody in 200µl



Target Protein

Principal Names: UCP2, uncoupling protein 2 (mitochondrial, proton carrier), SLC25A8, UCPH, uncoupling protein 2, uncoupling protein-2

Official Symbol: UCP2

Accession Number(s): NP_003346.2

Human GeneID(s): [7351](#)

Non-Human GeneID(s): 22228 (mouse), 54315 (rat)

Immunogen

Peptide with sequence C-DSVKQFYTKGSEH, from the internal region of the protein sequence according to NP_003346.2.

Please note the [peptide](#) is available for sale.

Purification and Storage

Purified from goat serum by ammonium sulphate precipitation followed by antigen affinity chromatography using the immunizing peptide.

Supplied at 0.5 mg/ml in Tris saline, 0.02% sodium azide, pH7.3 with 0.5% bovine serum albumin.

Aliquot and store at -20°C. Minimize freezing and thawing.

Applications Tested

Peptide ELISA: antibody detection limit dilution 1:128000.

Western blot: Approx 37kDa band observed in Rat Adipose and 28-30kDa in Mouse Spleen lysates (calculated MW of 33.4kDa according to Mouse NP_035801.3 and 33.4kDa according to Rat NP_062227.2). Recommended concentration: 0.3-1µg/ml. Primary incubation 1 hour at room temperature.

IHC: Weak positive staining of red and white pulp cells in paraffin embedded Human Kidney, at 6-7ug/ml.

Immunofluorescence: Strong expression of the protein seen in the Mitochondria of MCF7 cells. Recommended concentration: 10µg/ml.

Species Reactivity

Tested: Human, Mouse, Rat

Expected from sequence similarity: Human, Mouse, Rat, Dog

Specific Reference

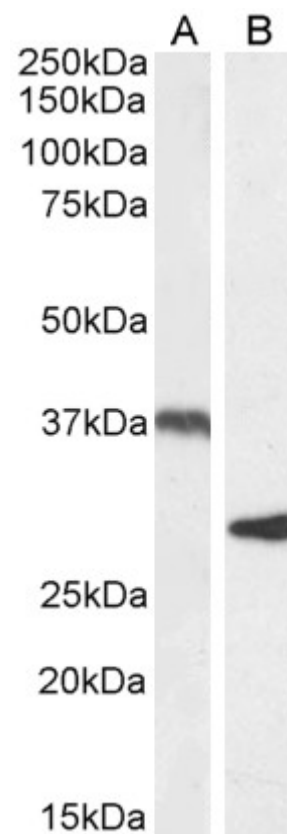
This antibody (previous batch) has been successfully used in IF/ICC in Mouse :

Allister EM, Robson-Doucette CA, Prentice KJ, Hardy AB, Sultan S, Gaisano HY, Kong D, Gilon P, Herrera PL, Lowell BB, Wheeler MB.

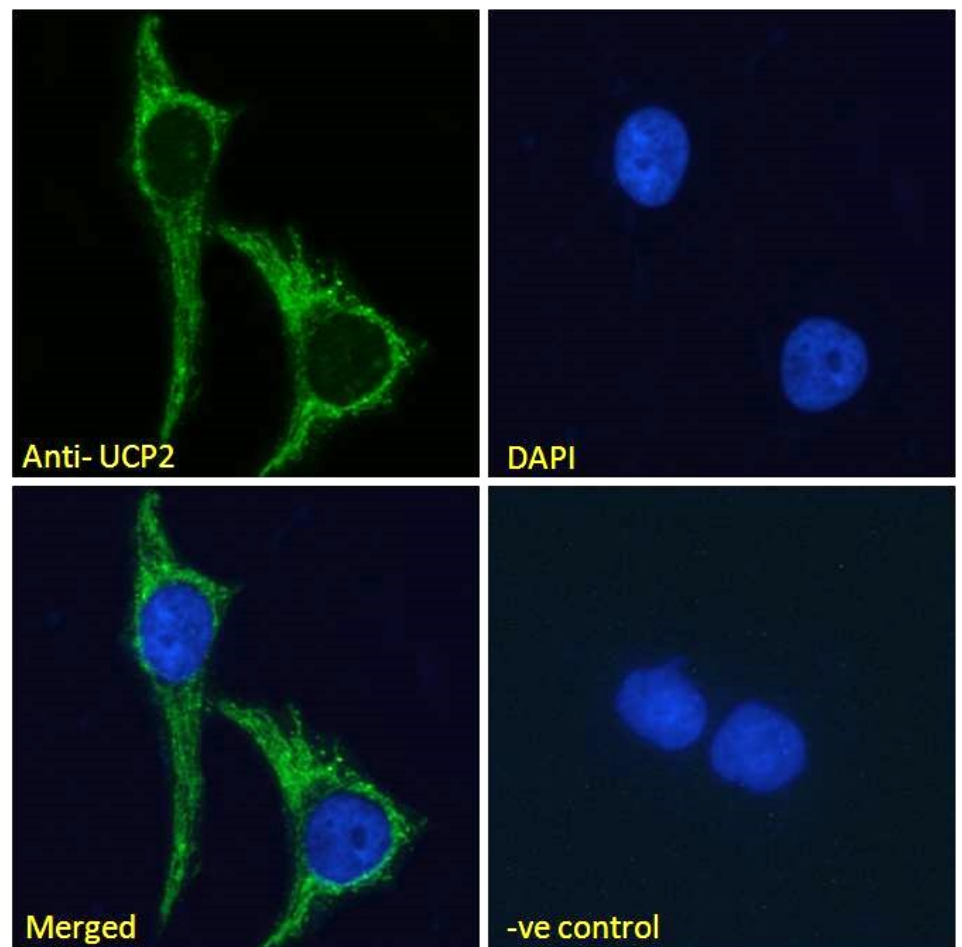
UCP2 Regulates the Glucagon Response to Fasting and Starvation.

Diabetes. 2013 Feb 22. [Epub ahead of print]

PMID: 23434936



EB07716 (1 μ g/ml) staining of Rat Adipose (A) and Mouse Spleen (B) lysate (35 μ g protein in RIPA buffer).
Detected by chemiluminescence.



EB07716 Immunofluorescence analysis of paraformaldehyde fixed MCF7 cells, permeabilized with 0.15% Triton.

Primary incubation 1hr (10ug/ml) followed by Alexa Fluor 488 secondary antibody (2ug/ml), showing Mitochondrial staining. The nuclear stain is DAPI (blue). Negative control: Unimmunized goat IgG (10ug/ml) followed by Alexa Fluor 488 secondary antibody (2ug/ml).