

## UK Office

### Everest Biotech Ltd

Cherwell Innovation Centre  
77 Heyford Park  
Upper Heyford  
Oxfordshire  
OX25 5HD  
UK

Enquiries:

[info@everestbiotech.com](mailto:info@everestbiotech.com)

Sales:

[sales@everestbiotech.com](mailto:sales@everestbiotech.com)

Tech support:

[support@everestbiotech.com](mailto:support@everestbiotech.com)

Tel: +44 (0)1869 238326

[www.everestbiotech.com](http://www.everestbiotech.com)

**Research Use Only. Not for  
diagnostic or therapeutic use.**

## EB09539 - Goat Anti-URP2 / kindlin-3 Antibody

Size: 100µg specific antibody in 200µl



### Target Protein

**Principal Names:** FERMT3, fermitin family homolog 3 (Drosophila), KIND3, MGC10966, MIG-2, MIG2B, UNC112C, URP2, URP2SF, UNC-112 related protein 2, fermitin family homolog 3, kindlin 3, kindlin-3

**Official Symbol:** FERMT3

**Accession Number(s):** NP\_113659.3; NP\_848537.1

**Human GeneID(s):** [83706](#)

**Non-Human GeneID(s):** 108101 (mouse), 309186 (rat)

**Important Comments:** This antibody is expected to recognize both isoforms (NP\_113659.3, NP\_848537.1).

### Immunogen

Peptide with sequence C-ERARGEELDED, from the C Terminus of the protein sequence according to NP\_113659.3; NP\_848537.1.

Please note the [peptide](#) is available for sale.

### Purification and Storage

Purified from goat serum by ammonium sulphate precipitation followed by antigen affinity chromatography using the immunizing peptide.

Supplied at 0.5 mg/ml in Tris saline, 0.02% sodium azide, pH7.3 with 0.5% bovine serum albumin.

Aliquot and store at -20°C. Minimize freezing and thawing.

### Applications Tested

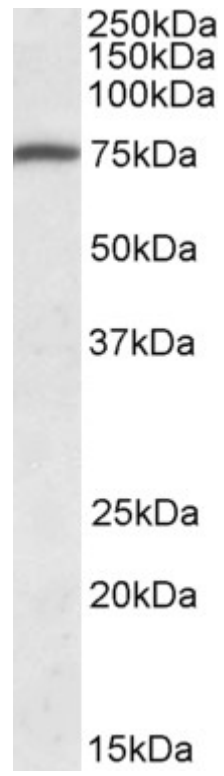
**Peptide ELISA:** antibody detection limit dilution 1:2000.

**Western blot:** Approx 75kDa band observed in Human Peripheral Blood Mononucleocytes lysates (calculated MW of 75.4kDa according to NP\_113659.3).  
Recommended concentration: 1-3µg/ml.

### Species Reactivity

**Tested:** Human

**Expected from sequence similarity:** Human, Mouse, Rat, Dog



EB09539 (1 $\mu$ g/ml) staining of Human Peripheral Blood Mononucleocytes lysate (35 $\mu$ g protein in RIPA buffer).  
Primary incubation was 1 hour. Detected by chemiluminescence.