



UK Office

Everest Biotech Ltd

Cherwell Innovation Centre
77 Heyford Park
Upper Heyford
Oxfordshire
OX25 5HD
UK

Enquiries:

info@everestbiotech.com

Sales:

sales@everestbiotech.com

Tech support:

support@everestbiotech.com

Tel: +44 (0)1869 238326

Fax: +44 (0)1869 238327

US Office

Everest Biotech c/o Abcore

405 Maple Street, Suite A106
Ramona,
CA 92065
USA

Inquiries:

info@everestbiotech.com

Sales:

usasales@everestbiotech.com

Tech support:

support@everestbiotech.com

Tel: 888-320-4628 (toll-free)

Fax: 888-841-9041

www.everestbiotech.com

**Research Use Only. Not for
diagnostic or therapeutic use.**

EB09539 - Goat Anti-URP2 / kindlin-3 Antibody

Size: 100µg specific antibody in 200µl



Target Protein

Principal Names: FERMT3, fermitin family homolog 3 (Drosophila), KIND3, MGC10966, MIG-2, MIG2B, UNC112C, URP2, URP2SF, UNC-112 related protein 2, fermitin family homolog 3, kindlin 3, kindlin-3

Official Symbol: FERMT3

Accession Number(s): NP_113659.3; NP_848537.1

Human GeneID(s): [83706](#)

Non-Human GeneID(s): 108101 (mouse), 309186 (rat)

Important Comments: This antibody is expected to recognize both isoforms (NP_113659.3, NP_848537.1).

Immunogen

Peptide with sequence C-ERARGEELDED, from the C Terminus of the protein sequence according to NP_113659.3; NP_848537.1.

Please note the [peptide](#) is available for sale.

Purification and Storage

Purified from goat serum by ammonium sulphate precipitation followed by antigen affinity chromatography using the immunizing peptide.

Supplied at 0.5 mg/ml in Tris saline, 0.02% sodium azide, pH7.3 with 0.5% bovine serum albumin.

Aliquot and store at -20°C. Minimize freezing and thawing.

Applications Tested

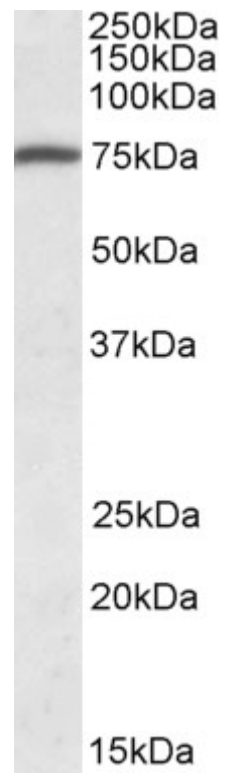
Peptide ELISA: antibody detection limit dilution 1:2000.

Western blot: Approx 75kDa band observed in Human Peripheral Blood Mononucleocytes lysates (calculated MW of 75.4kDa according to NP_113659.3).
Recommended concentration: 1-3µg/ml.

Species Reactivity

Tested: Human

Expected from sequence similarity: Human, Mouse, Rat, Dog



EB09539 (1µg/ml) staining of Human Peripheral Blood Mononucleocytes lysate (35µg protein in RIPA buffer).
Primary incubation was 1 hour. Detected by chemiluminescence.