



UK Office

Everest Biotech Ltd

Cherwell Innovation Centre
77 Heyford Park
Upper Heyford
Oxfordshire
OX25 5HD
UK

Enquiries:

info@everestbiotech.com

Sales:

sales@everestbiotech.com

Tech support:

support@everestbiotech.com

Tel: +44 (0)1869 238326

Fax: +44 (0)1869 238327

US Office

Everest Biotech c/o Abcore

405 Maple Street, Suite A106
Ramona,
CA 92065
USA

Inquiries:

info@everestbiotech.com

Sales:

usasales@everestbiotech.com

Tech support:

support@everestbiotech.com

Tel: 888-320-4628 (toll-free)

Fax: 888-841-9041

www.everestbiotech.com

**Research Use Only. Not for
diagnostic or therapeutic use.**

EB05992 - Goat Anti-USP16 / UBP-M Antibody

Size: 100µg specific antibody in 200µl



Target Protein

Principal Names: USP16, ubiquitin specific protease 16, Ubp-M, human ubiquitin processing protease, ubiquitin specific peptidase 16, UBP-M, deubiquitinating enzyme 16, ubiquitin carboxyl-terminal hydrolase 16, ubiquitin thiolesterase 16, ubiquitin-specific processing protease 16

Official Symbol: USP16

Accession Number(s): NP_006438.1; NP_001001992.1

Human GeneID(s): [10600](#)

Important Comments: This antibody is expected to recognise isoform a (NP_006438.1) and isoform b (NP_001001992.1). Reported variants represent identical protein (NP_006438.1; NP_001027582.1).

Immunogen

Peptide with sequence GKKRTKGKTVPIDD-C, from the N Terminus of the protein sequence according to NP_006438.1; NP_001001992.1.

Please note the [peptide](#) is available for sale.

Purification and Storage

Purified from goat serum by ammonium sulphate precipitation followed by antigen affinity chromatography using the immunizing peptide.

Supplied at 0.5 mg/ml in Tris saline, 0.02% sodium azide, pH7.3 with 0.5% bovine serum albumin.

Aliquot and store at -20°C. Minimize freezing and thawing.

Applications Tested

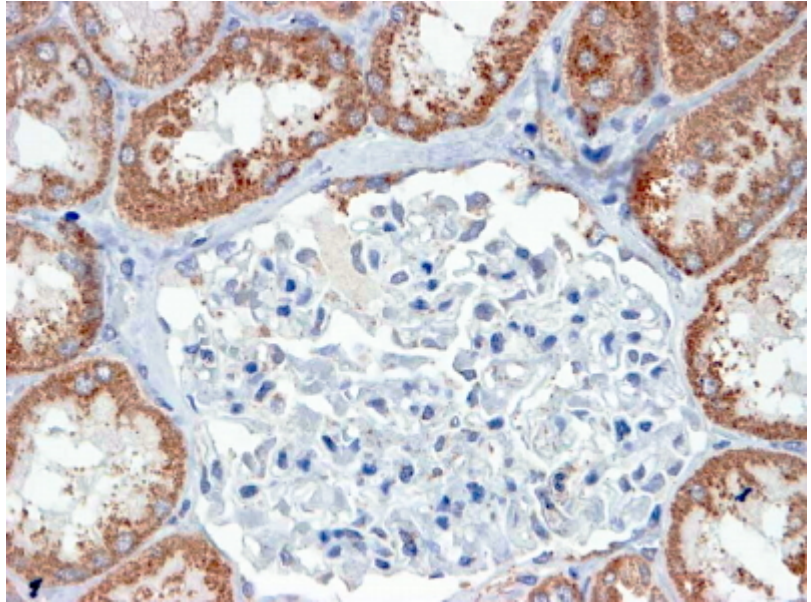
Peptide ELISA: antibody detection limit dilution 1:32000.

IHC: In paraffin embedded Human Kidney shows textured cytoplasm staining in the convoluted tubules. Recommended concentration, 4-6µg/ml.

Species Reactivity

Tested: Human

Expected from sequence similarity: Human, Mouse, Rat, Dog, Pig, Cow



EB05992 (4µg/ml) staining of paraffin embedded Human Human Kidney. Steamed antigen retrieval with Tris/EDTA buffer pH 9, HRP-staining.