



## UK Office

### Everest Biotech Ltd

Cherwell Innovation Centre  
77 Heyford Park  
Upper Heyford  
Oxfordshire  
OX25 5HD  
UK

Enquiries:

[info@everestbiotech.com](mailto:info@everestbiotech.com)

Sales:

[sales@everestbiotech.com](mailto:sales@everestbiotech.com)

Tech support:

[support@everestbiotech.com](mailto:support@everestbiotech.com)

Tel: +44 (0)1869 238326

Fax: +44 (0)1869 238327

## US Office

### Everest Biotech c/o Abcore

405 Maple Street, Suite A106  
Ramona,  
CA 92065  
USA

Inquiries:

[info@everestbiotech.com](mailto:info@everestbiotech.com)

Sales:

[usasales@everestbiotech.com](mailto:usasales@everestbiotech.com)

Tech support:

[support@everestbiotech.com](mailto:support@everestbiotech.com)

Tel: 888-320-4628 (toll-free)

Fax: 888-841-9041

[www.everestbiotech.com](http://www.everestbiotech.com)

**Research Use Only. Not for  
diagnostic or therapeutic use.**

## EB05974 - Goat Anti-USP6 / TRE2 / TRE17 Antibody

Size: 100µg specific antibody in 200µl



### Target Protein

**Principal Names:** USP6, ubiquitin specific protease 6 (Tre-2 oncogene), HRP1, TRE2, Tre2, TRE17, Tre-2, tre-2 oncogene, hyperpolymorphic gene 1, USP6-short, ubiquitin specific peptidase 6-, ubiquitin specific protease 6, ubiquitin specific peptidase 6 (Tre-2 oncogene), ubiquitin-specific protease USP6

**Official Symbol:** USP6

**Accession Number(s):** NP\_004496.1

**Human GeneID(s):** [9098](#)

### Immunogen

Peptide with sequence KISPLHHLQMECSP, from the C Terminus of the protein sequence according to NP\_004496.1.

Please note the [peptide](#) is available for sale.

### Purification and Storage

Purified from goat serum by ammonium sulphate precipitation followed by antigen affinity chromatography using the immunizing peptide.

Supplied at 0.5 mg/ml in Tris saline, 0.02% sodium azide, pH7.3 with 0.5% bovine serum albumin.

Aliquot and store at -20°C. Minimize freezing and thawing.

### Applications Tested

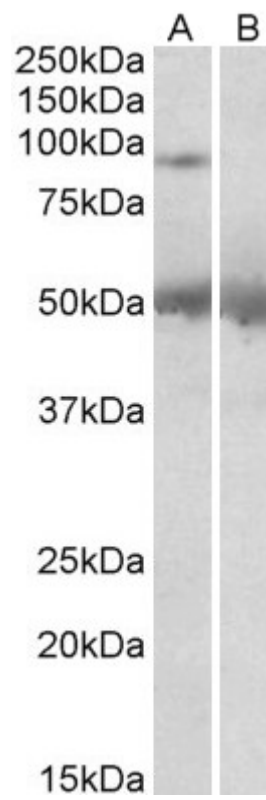
**Peptide ELISA:** antibody detection limit dilution 1:16000.

**Western blot:** Approx 90kDa band observed in Human Placenta lysates (calculated MW of 89.5kDa according to NP\_004496.1). Recommended concentration: 1-3µg/ml. An additional band of 50kDa was consistently observed, however this band was not blocked by the immunizing peptide and it is therefore a non-specific signal. We call for caution when used for other assays than Western blot.

### Species Reactivity

**Tested:** Human

**Expected from sequence similarity:** Human



EB05974 (2µg/ml) staining of Human Placenta lysate (35µg protein in RIPA buffer) with (B) and without (A) blocking with the immunizing peptide. Primary incubation was 1 hour. Detected by chemiluminescence.