



## International Office

### Everest Biotech Ltd

Vector Laboratories, Inc.  
6737 Mowry Ave  
Newark, CA 94560  
United States

Customer Service:

[customerservice@vectorlabs.com](mailto:customerservice@vectorlabs.com)

Technical Service:

[technical@vectorlabs.com](mailto:technical@vectorlabs.com)

Tel: +1 (800) 227-6666

[www.everestbiotech.com](http://www.everestbiotech.com)

**Research Use Only. Not for  
diagnostic or therapeutic use.**

## EB08231-B - Goat Anti-UXT, Biotinylated Antibody

Size: 100µg specific antibody in 200µl



### Target Protein

**Principal Names:** UXT, ubiquitously expressed prefoldin like chaperone, ART-27, STAP1, SKP2-associated alpha PFD 1, androgen receptor trapped clone 27 protein, ubiquitously expressed transcript protein, ubiquitously-expressed, prefoldin-like chaperone

**Official Symbol:** UXT

**Accession Number(s):** NP\_705582.1; NP\_004173.1

**Human GeneID(s):** [8409](#)

**Important Comments:** This antibody is expected to recognize both reported isoforms (NP\_004173.1; NP\_705582.1).

### Immunogen

Peptide with sequence C-DHRDKVYEQLAKY., from the C Terminus of the protein sequence according to NP\_705582.1; NP\_004173.1.

Please note the [peptide](#) is available for sale.

### Purification and Storage

Purified from goat serum by ammonium sulphate precipitation followed by antigen affinity chromatography using the immunizing peptide.

Supplied at 0.5 mg/ml in Tris saline, 0.02% sodium azide, pH7.3 with 0.5% bovine serum albumin.

Aliquot and store at -20°C. Minimize freezing and thawing.

### Applications Tested

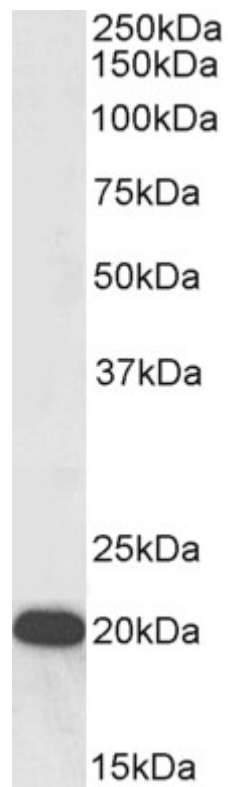
**Peptide ELISA:** antibody detection limit dilution 1:64000.

**Western blot:** Approx 20kDa band observed in Human Kidney lysates (calculated MW of 19.6kDa according to NP\_705582.1). See non-biotinylated parental product's datasheet for further QC data. Recommended concentration: 0.3-1µg/ml.

### Species Reactivity

**Tested:** Human

**Expected from sequence similarity:** Human



Biotinylated EB08231 (0.3µg/ml) staining of Human Kidney lysate (35µg protein in RIPA buffer), exactly mirroring its parental non-biotinylated product. Primary incubation was 1 hour. Detected by chemiluminescence, using streptavidin-HRP and using NAP blocker as a substitute for skimmed milk.