



## International Office

### Everest Biotech Ltd

Vector Laboratories, Inc.  
6737 Mowry Ave  
Newark, CA 94560  
United States

Customer Service:

[customerservice@vectorlabs.com](mailto:customerservice@vectorlabs.com)

Technical Service:

[technical@vectorlabs.com](mailto:technical@vectorlabs.com)

Tel: +1 (800) 227-6666

[www.everestbiotech.com](http://www.everestbiotech.com)

**Research Use Only. Not for  
diagnostic or therapeutic use.**

## EB12619 - Goat Anti-VASP (aa236-249) Antibody

Size: 100µg specific antibody in 200µl



### Target Protein

**Principal Names:** VASP, vasodilator-stimulated phosphoprotein

**Official Symbol:** VASP

**Accession Number(s):** NP\_003361.1

**Human GeneID(s):** [7408](#)

**Non-Human GeneID(s):** 22323 (mouse)

### Immunogen

Peptide with sequence C-RKVSKQEEASGGPT, from the internal region of the protein sequence according to NP\_003361.1.

Please note the [peptide](#) is available for sale.

### Purification and Storage

Purified from goat serum by ammonium sulphate precipitation followed by antigen affinity chromatography using the immunizing peptide.

Supplied at 0.5 mg/ml in Tris saline, 0.02% sodium azide, pH7.3 with 0.5% bovine serum albumin.

Aliquot and store at -20°C. Minimize freezing and thawing.

### Applications Tested

**Peptide ELISA:** antibody detection limit dilution 1:128000.

**Western blot:** Approx 50kDa band observed in Human Platelets lysates (calculated MW of 39.8kDa according to NP\_003361.1). The observed molecular weight corresponds to earlier findings in literature with different antibodies (Reinhard et al, EMBO J. 1992 Jun;11(6):2063-70. PMID: 1318192). Recommended concentration: 0.01-0.03µg/ml. Approx 40kDa band observed in Mouse Thymus lysates (calculated MW of 39.7kDa according to NP\_033525.2). Recommended concentration: 1-3µg/ml.

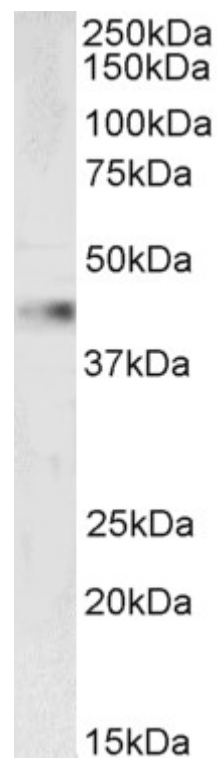
### Species Reactivity

**Tested:** Human, Mouse

**Expected from sequence similarity:** Human, Mouse, Dog, Cow



EB12619 (0.01µg/ml) staining of Human Platelets lysate (35µg protein in RIPA buffer). Primary incubation was 1 hour. Detected by chemiluminescence.



EB12619 (1µg/ml) staining of Mouse Thymus lysate (35µg protein in RIPA buffer). Primary incubation was 1 hour. Detected by chemiluminescence.