



UK Office

Everest Biotech Ltd

Cherwell Innovation Centre
77 Heyford Park
Upper Heyford
Oxfordshire
OX25 5HD
UK

Enquiries:

info@everestbiotech.com

Sales:

sales@everestbiotech.com

Tech support:

support@everestbiotech.com

Tel: +44 (0)1869 238326

Fax: +44 (0)1869 238327

US Office

Everest Biotech c/o Abcore

405 Maple Street, Suite A106
Ramona,
CA 92065
USA

Inquiries:

info@everestbiotech.com

Sales:

usasales@everestbiotech.com

Tech support:

support@everestbiotech.com

Tel: 888-320-4628 (toll-free)

Fax: 888-841-9041

www.everestbiotech.com

**Research Use Only. Not for
diagnostic or therapeutic use.**

EB08020 - Goat Anti-VCBP / GC (aa 18 - 30) Antibody

Size: 100µg specific antibody in 200µl



Target Protein

Principal Names: GC, group-specific component (vitamin D binding protein), DBP, DBP/GC, VDBG, VDBP, vitamin D binding protein, vitamin D-binding alpha-globulin, vitamin D-binding protein, vitamin D-binding protein/group specific component

Official Symbol: GC

Accession Number(s): NP_000574.2

Human GeneID(s): [2638](#)

Non-Human GeneID(s): 14473 (mouse), 24384 (rat)

Immunogen

Peptide with sequence ERGRDYEKNKVCK, from the internal region (near the N Terminus) of the protein sequence according to NP_000574.2.

Please note the [peptide](#) is available for sale.

Purification and Storage

Purified from goat serum by ammonium sulphate precipitation followed by antigen affinity chromatography using the immunizing peptide.

Supplied at 0.5 mg/ml in Tris saline, 0.02% sodium azide, pH7.3 with 0.5% bovine serum albumin.

Aliquot and store at -20°C. Minimize freezing and thawing.

Applications Tested

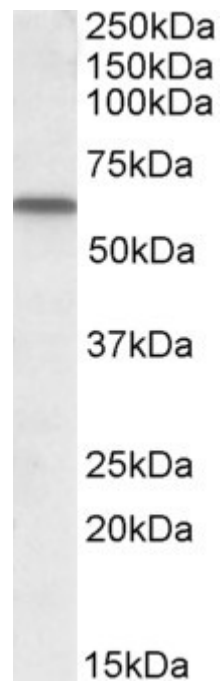
Peptide ELISA: antibody detection limit dilution 1:1000.

Western blot: Approx 60kDa band observed in Human Lung and Ovary lysates (calculated MW of 52.9kDa according to NP_000574.2). Recommended concentration: 0.5-3µg/ml.

Species Reactivity

Tested: Human

Expected from sequence similarity: Human, Mouse, Rat, Dog



EB08020 (1µg/ml) staining of Human Lung lysate (35µg protein in RIPA buffer). Primary incubation was 1 hour.
Detected by chemiluminescence.