



UK Office

Everest Biotech Ltd

Cherwell Innovation Centre
77 Heyford Park
Upper Heyford
Oxfordshire
OX25 5HD
UK

Enquiries:

info@everestbiotech.com

Sales:

sales@everestbiotech.com

Tech support:

support@everestbiotech.com

Tel: +44 (0)1869 238326

Fax: +44 (0)1869 238327

US Office

Everest Biotech c/o Abcore

405 Maple Street, Suite A106
Ramona,
CA 92065
USA

Inquiries:

info@everestbiotech.com

Sales:

usasales@everestbiotech.com

Tech support:

support@everestbiotech.com

Tel: 888-320-4628 (toll-free)

Fax: 888-841-9041

www.everestbiotech.com

**Research Use Only. Not for
diagnostic or therapeutic use.**

EB06982 - Goat Anti-VDP p115 Antibody

Size: 100µg specific antibody in 200µl



Target Protein

Principal Names: VDP p115, vesicle docking protein, P115, TAP, transcytosis-associated protein, USO1, USO1 homolog, vesicle docking protein (yeast), USO1 homolog, vesicle docking protein, transcytosis associated protein, vesicle docking protein p115

Official Symbol: USO1

Accession Number(s): NP_003706.1

Human GeneID(s): [8615](#)

Immunogen

Peptide with sequence C-DESEDPGKDLDH, from the C Terminus of the protein sequence according to NP_003706.1.

Please note the [peptide](#) is available for sale.

Purification and Storage

Purified from goat serum by ammonium sulphate precipitation followed by antigen affinity chromatography using the immunizing peptide.

Supplied at 0.5 mg/ml in Tris saline, 0.02% sodium azide, pH7.3 with 0.5% bovine serum albumin.

Aliquot and store at -20°C. Minimize freezing and thawing.

Applications Tested

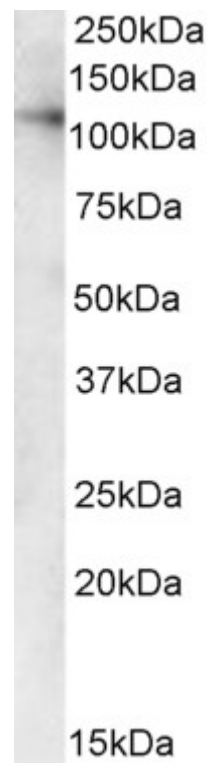
Peptide ELISA: antibody detection limit dilution 1:2000.

Western blot: Approx 110kDa band observed in Human Kidney and Liver lysates (calculated MW of 108kDa according to NP_003706.1). Recommended concentration: 1-3µg/ml. Primary incubation was 1 hour.

Species Reactivity

Tested: Human

Expected from sequence similarity: Human



EB06982 (1µg/ml) staining of Human Kidney and Liver lysates (35µg protein in RIPA buffer). Detected by chemiluminescence.