



## UK Office

### Everest Biotech Ltd

Cherwell Innovation Centre  
77 Heyford Park  
Upper Heyford  
Oxfordshire  
OX25 5HD  
UK

Enquiries:

[info@everestbiotech.com](mailto:info@everestbiotech.com)

Sales:

[sales@everestbiotech.com](mailto:sales@everestbiotech.com)

Tech support:

[support@everestbiotech.com](mailto:support@everestbiotech.com)

Tel: +44 (0)1869 238326

Fax: +44 (0)1869 238327

## US Office

### Everest Biotech c/o Abcore

405 Maple Street, Suite A106  
Ramona,  
CA 92065  
USA

Inquiries:

[info@everestbiotech.com](mailto:info@everestbiotech.com)

Sales:

[usasales@everestbiotech.com](mailto:usasales@everestbiotech.com)

Tech support:

[support@everestbiotech.com](mailto:support@everestbiotech.com)

Tel: 888-320-4628 (toll-free)

Fax: 888-841-9041

[www.everestbiotech.com](http://www.everestbiotech.com)

**Research Use Only. Not for  
diagnostic or therapeutic use.**

## EB06803-T - Goat Anti-VDR Antibody - Trial

Size: 20µg specific antibody in 40µl



### Target Protein

**Principal Names:** VDR, vitamin D (1,25- dihydroxyvitamin D3) receptor, HGNC:12679, NR111, vitamin D (1,25-dihydroxyvitamin D3) receptor

**Official Symbol:** VDR

**Accession Number(s):** NP\_000367.1; NP\_001017535.1;  
NP\_001351014.1;NP\_001017536.1

**Human GeneID(s):** [7421](#)

**Non-Human GeneID(s):** 22337 (mouse), 24873 (rat)

### Immunogen

Peptide with sequence CGNQDYKYRVSD, from the internal region of the protein sequence according to NP\_000367.1; NP\_001017535.1;  
NP\_001351014.1;NP\_001017536.1.

Please note the [peptide](#) is available for sale.

### Purification and Storage

Purified from goat serum by ammonium sulphate precipitation followed by antigen affinity chromatography using the immunizing peptide.

Supplied at 0.5 mg/ml in Tris saline, 0.02% sodium azide, pH7.3 with 0.5% bovine serum albumin.

Aliquot and store at -20°C. Minimize freezing and thawing.

### Applications Tested

**Peptide ELISA:** antibody detection limit dilution 1:16000.

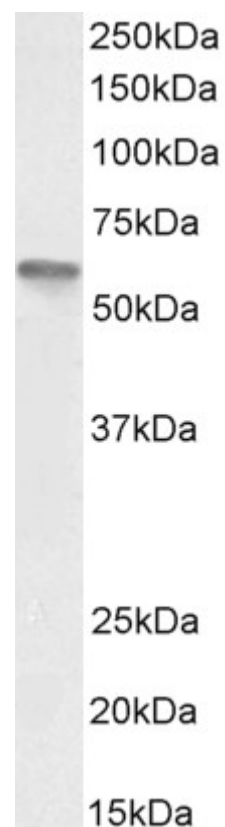
**Western blot:** Approx 55kDa band observed in Human Placenta and Duodenum lysates and approx. 55-60kDa in lysates of cell line U937 (calculated MW of 55.2kDa according to NP\_001351014.1). Recommended concentration: 2-3µg/ml. Primary incubation 1 hour at room temperature.

**Flow Cytometry:** Flow cytometric analysis of U937 cells. Recommended concentration: 10ug/ml.

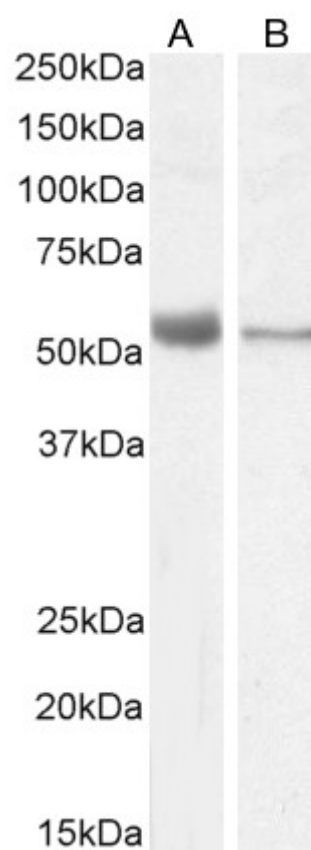
### Species Reactivity

**Tested:** Human

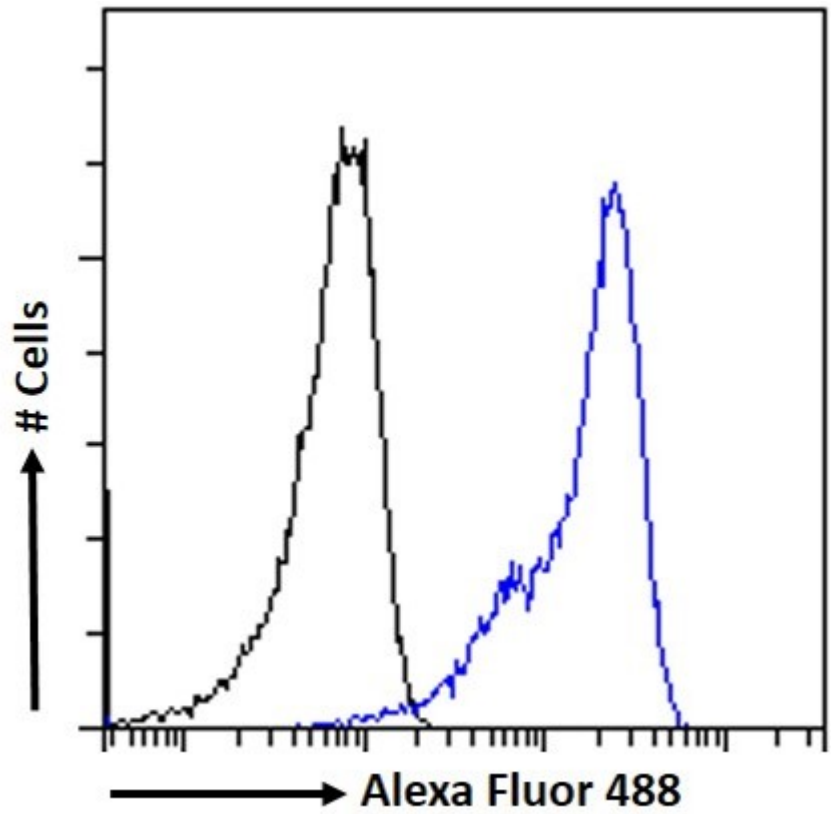
**Expected from sequence similarity:** Human, Mouse, Rat, Dog



EB06803 (3µg/ml) staining of U937 cell lysate (35µg protein in RIPA buffer. Detected by chemiluminescence.



EB06803 (3µg/ml) staining of Human Placenta (A) and (2µg/ml) Duodenum (B) lysate (35µg protein in RIPA buffer. Detected by chemiluminescence.



EB06803 Flow cytometric analysis of paraformaldehyde fixed U937 cells (blue line), permeabilized with 0.5% Triton. Primary incubation 1hr (10ug/ml) followed by Alexa Fluor 488 secondary antibody (1ug/ml). IgG control: Unimmunized goat IgG (black line) followed by Alexa Fluor 488 secondary antibody.