

## UK Office

### Everest Biotech Ltd

Cherwell Innovation Centre  
77 Heyford Park  
Upper Heyford  
Oxfordshire  
OX25 5HD  
UK

Enquiries:

[info@everestbiotech.com](mailto:info@everestbiotech.com)

Sales:

[sales@everestbiotech.com](mailto:sales@everestbiotech.com)

Tech support:

[support@everestbiotech.com](mailto:support@everestbiotech.com)

Tel: +44 (0)1869 238326

Fax: +44 (0)1869 238327

## US Office

### Everest Biotech c/o Abcore

405 Maple Street, Suite A106  
Ramona,  
CA 92065  
USA

Inquiries:

[info@everestbiotech.com](mailto:info@everestbiotech.com)

Sales:

[usasales@everestbiotech.com](mailto:usasales@everestbiotech.com)

Tech support:

[support@everestbiotech.com](mailto:support@everestbiotech.com)

Tel: 888-320-4628 (toll-free)

Fax: 888-841-9041

[www.everestbiotech.com](http://www.everestbiotech.com)

**Research Use Only. Not for  
diagnostic or therapeutic use.**

## EB08600 - Goat Anti-VGLUT1 Antibody

Size: 100µg specific antibody in 200µl



### Target Protein

**Principal Names:** SLC17A7, solute carrier family 17 (sodium-dependent inorganic phosphate cotransporter), member 7, BNPI, VGLUT1, brain-specific Na-dependent inorganic phosphate cotransporter, solute carrier family 17, member 7, vesicular glutamate transporter 1

**Official Symbol:** SLC17A7

**Accession Number(s):** NP\_064705.1

**Human GeneID(s):** [57030](#)

### Immunogen

Peptide with sequence C-HDQLAGSDDSEMED, from the internal region of the protein sequence according to NP\_064705.1.

Please note the [peptide](#) is available for sale.

### Purification and Storage

Purified from goat serum by ammonium sulphate precipitation followed by antigen affinity chromatography using the immunizing peptide.

Supplied at 0.5 mg/ml in Tris saline, 0.02% sodium azide, pH7.3 with 0.5% bovine serum albumin.

Aliquot and store at -20°C. Minimize freezing and thawing.

### Applications Tested

**Peptide ELISA:** antibody detection limit dilution 1:32000.

**IHC:** In paraffin embedded Human Cortex shows vesicular staining amongst the many axons and dendrites. Paraffin embedded Human Adrenal Cortex. Recommended concentration: 3.75µg/ml. In paraffin embedded Mouse Brain shows staining of the periphery of the ventromedial nucleus in the hypothalamus Recommended concentration: 0.3-1µg/ml.

**Immunofluorescence:** This antibody has been successfully used in IF on Human, PMID: 28455787.

### Species Reactivity

**Tested:** Human, Mouse

**Expected from sequence similarity:** Human, Mouse, Rat, Dog, Cow

### Specific Reference

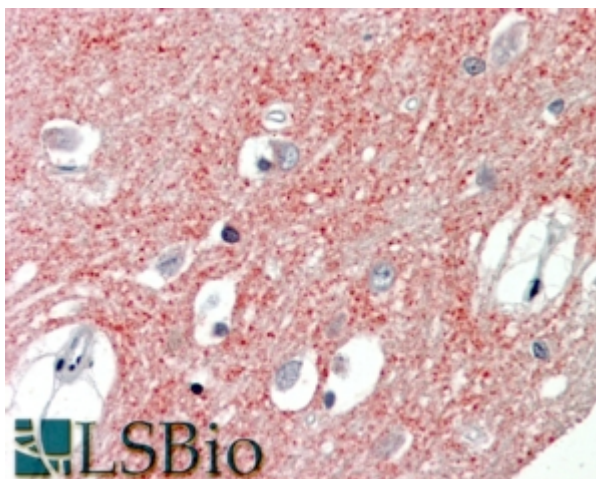
**This antibody has been successfully used in IF on Human:**

Lu-Kang Wang, Xin Chen, Chun-Qing Zhang, Chao Liang, Yu-Jia Wei, Jiong Yue, Shi-Yong Liu, Hui Yang

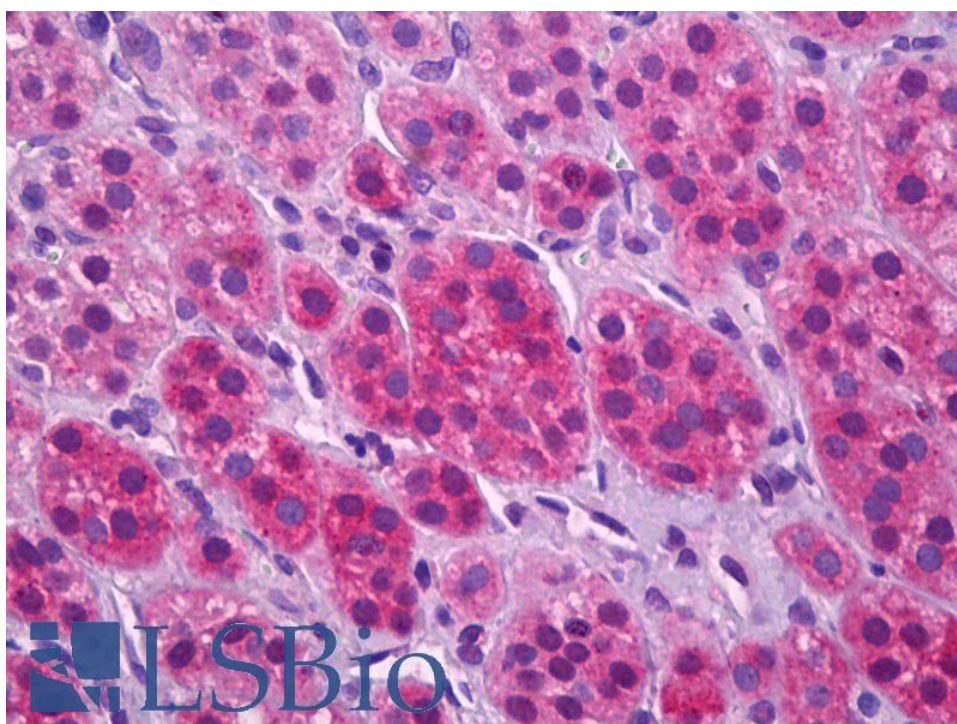
Elevated Expression of TRPC4 in Cortical Lesions of Focal Cortical Dysplasia II and Tuberous Sclerosis Complex

J Mol Neurosci. 2017 Jun;62(2):222-231.

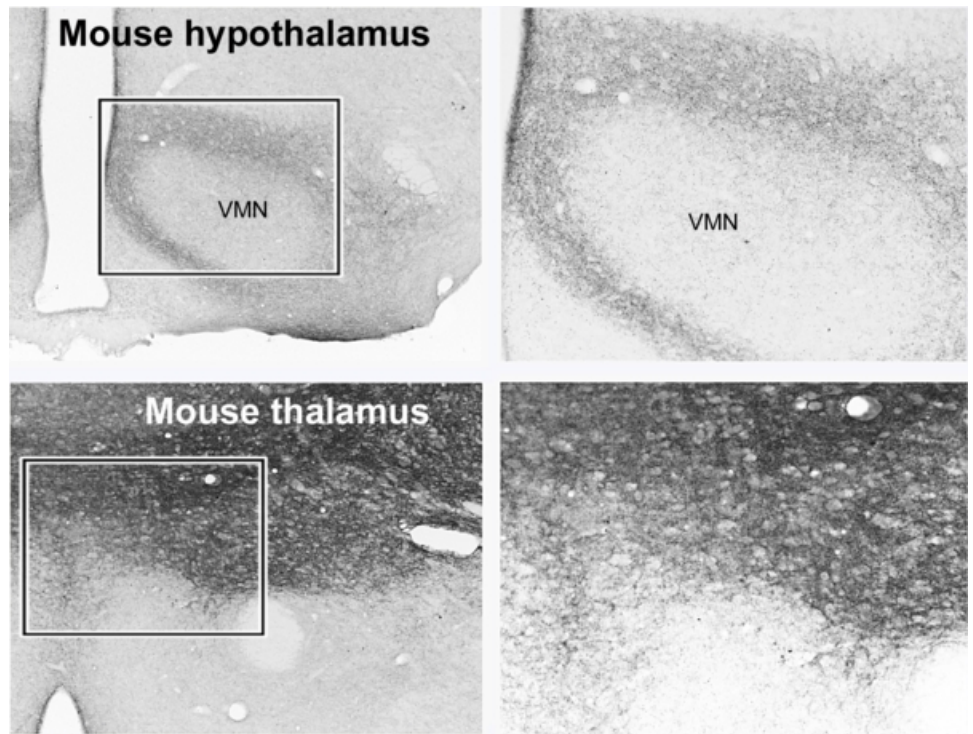
PMID: 28455787



EB08600 (3.75µg/ml) staining of paraffin embedded Human Cortex. Steamed antigen retrieval with citrate buffer pH 6, AP-staining.



EB08600 (3.75µg/ml) staining of paraffin embedded Human Adrenal Cortex. Steamed antigen retrieval with citrate buffer pH 6, AP-staining.



EB08600 (0.25µg/ml) staining of paraffin embedded Mouse Hypothalamus and Thalamus. Antigen retrieval at 80C for 30min with citrate buffer pH 6, HRP-staining (data kindly provided by Dr. E. Hrabovszky, Budapest, Hungary)