

Research Use Only. Not for diagnostic or therapeutic use.

Storage: For long-term storage keep aliquots at -20°C. (Store no longer than 12 months at 4°C). Minimize freezing and thawing.

EB06558 - Goat Anti-VMAT2 / SLC18A2 Antibody

Size: 100µg specific antibody in 200µl



Target Protein

Principal Names: solute carrier family 18 (vesicular monoamine), member 2, VAT2, SVMT, SVAT, SLC18A2, VMAT2

Official Symbol: SLC18A2

Accession Number(s): NP_003045.2

Human GeneID(s): [6571](#)

Non-Human GeneID(s): 214084 (mouse), 25549 (rat)

Immunogen

Peptide with sequence C-SYPIGEDEESESD, from the C Terminus of the protein sequence according to NP_003045.2.

Please note the [peptide](#) is available for sale.

Purification and Storage

Purified from goat serum by ammonium sulphate precipitation followed by antigen affinity chromatography using the immunizing peptide.

Supplied at 0.5 mg/ml in Tris saline, 0.02% sodium azide, pH7.3 with 0.5% bovine serum albumin.

Aliquot and store at -20°C. Minimize freezing and thawing.

Applications Tested

Peptide ELISA: antibody detection limit dilution 1:8000.

Western blot: A faint band of appr. 50kDa band observed in Human Placenta lysates (calculated MW of 55.7kDa according to NP_003045). Recommended concentration: 0.3-1.0 µg/ml.

IHC: In paraffin embedded Human Adrenal Gland shows cytoplasm staining of some epithelial cells in the medula. Recommended concentration, 2-4µg/ml.

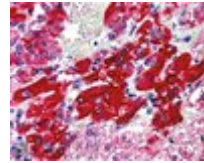
Species Reactivity

Tested: Human

Expected from sequence similarity: Human, Mouse, Rat, Dog, Pig, Cow



EB06558 (0.3 μ g/ml) staining of Human Placenta lysate (35 μ g protein in RIPA buffer). Primary incubation was 1 hour. Detected by chemiluminescence.



EB06558 (2.5 μ g/ml) staining of paraffin embedded Human Adrenal Gland. Steamed antigen retrieval with citrate buffer pH 6, AP-staining.